

Product datasheet for **RG237996**

SNX2 (NM_001278199) Human Tagged ORF Clone

Product data:

Product Type:	Expression Plasmids
Product Name:	SNX2 (NM_001278199) Human Tagged ORF Clone
Tag:	TurboGFP
Symbol:	SNX2
Synonyms:	TRG-9
Mammalian Cell Selection:	Neomycin
Vector:	pCMV6-AC-GFP (PS100010)
E. coli Selection:	Ampicillin (100 ug/mL)
ORF Nucleotide Sequence:	>RG237996 representing NM_001278199. Blue=ORF Red=Cloning site Green=Tag(s)

```
GCTCGTTT TAGTGAACCGTCAGAATTTTGT AATACGACTCACTATAGGGCGGCCGGGAATTCGTCGACTG
GATCCGGTACCGAGGAGATCTGCCGCC GCGATCGCC
ATGTCTGCTCCCGTGATCTTTGATAGATCCAGGGAAGAGATTGAAGAAGAAGCAAATGGAGACATTTT
GACATAGAAAATGGTGTATCAGATCCAGAAAAAGTTGGTGATGGCATGAATGCCTATATGGCATATAGA
GTAACAACAAAGACATCTCTTCCATGTTCAAGAGTGAATTTTCAGTGAAAAGAAGATTCAGCGAC
TTTCTTGGTTTGACAGCAAATTAGCAAGCAAATTTTACATGTTGGTTATATTGTGCCACCAGCTCCA
GAAAAGAGTATAGTAGGGATGACCAAGGTCAAAGTGGTAAAGAAGACTCATCATCCACTGAGTTTGTGA
GAAAACGGAGAGCAGCTCTTGAAAGGTATCTTCAAAGAACAGTAAAACATCCAACCTTACTACAGGAT
CCTGATTTAAGGCAGTTCTTGAAAGTTTCAGAGCTGCCTAGAGCAGTTAATACACAGGCTCTGAGTGGA
GCAGGAATATTGAGGATGGTGAACAAGGCTGCCGACGCTGTCAACAAAATGACAATCAAGATGAATGAA
TCGGATGCATGGTTTGAAGAAAAGCAGCAGCAATTTGAGAATCTGGATCAGCAACTTAGGAACTTCAT
GTCAGTGTGAAGCCTTGGTCTGTATAGAAAAGAACTTTCAGCCAACACAGCTGCCTTTGCTAAAAGT
GCTGCCATGTTAGGTAATTCTGAGGATCATACTGCTTTATCTAGAGCTTTGTCTCAGCTTGCCAGAGTT
GAGGAGAAGATAGACCAGTTACATCAAGAACAAGCTTTTGTGACTTTTATATGTTTTCAGAACTACTT
AGTGACTACATTCGTCTTATTGCTGCAGTGAAGGTGTGTTTGACCATCGAATGAAGTCTGCGCAGAAA
TGGGAAGATGCTCAAATTACTTTGCTCAAAAAACGTGAAGCTGAAGCAAAAATGATGGTTGCTAACAAA
CCAGATAAAATACAGCAAGCTAAAAATGAAATAAGAGAGTGGGAGGCGAAAAGTGCAACAAGGGGAAAGA
GATTTTGAACAGATATCTAAAACGATTCGAAAAGAAGTGGGAAGATTTGAGAAAAGACGAGTGAAGGAT
TTTAAAACCGTTATCATCAAGTACTTAGAATCACTAGTTCAAACACAACAACAGCTGATAAAAATCTGG
GAAGCATTCTACCTGAAGCCAAAGCCATTGCC
ACGCGTACGCGGCCGCTCGAG - GFP Tag - GTTTAAAC
```



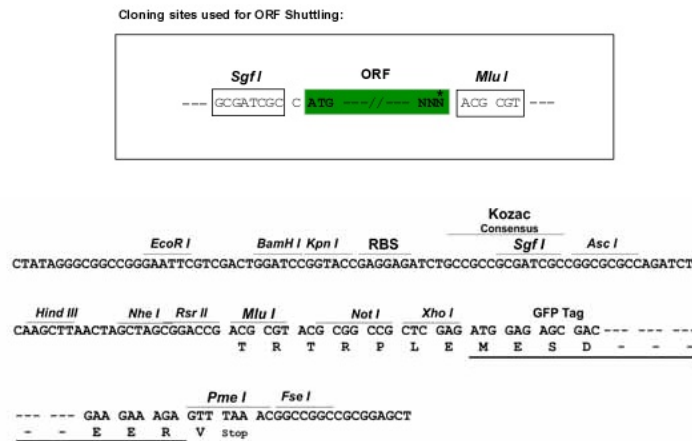
[View online >](#)

Protein Sequence: >Peptide sequence encoded by RG237996
 Blue=ORF Red=Cloning site Green=Tag(s)

MSAPVIFDRSREEIEEEEANGDIFDIEIGVSDPEKVGDMNAYMAYRVTTKTSLSMFSKSEFSVKRRFSD
 FLGLHSLKASKYLHVGYIVPPAPEKSIIVGMTKVKVKGEDSSSTEFVEKRRALERYLQRTVKHPTLLQD
 PDLRQFLESSELPRAVNTQALSGAGILRMVNKAADAVNKMTIKMNESDAWFEEKQQQFENLDQQLRKLH
 VSVEALVCHRKELSANTAFAKSAAMLGNSEDHTALSRALSQLAEVEEKIDQLHQEQAFADFYMFSELL
 SDYIRLIAAVKGVFDHRMKCWQKWEDAQITLLKKREAEAKMMVANKPDKIQQAKNEIREWEAKVQQGER
 DFEQISKIRKEVGRFEKERVKDFKTVIIKYLESLVQTQQQLIKYWEAFLPEAKAIA
TRTRPLEMESDESGLPAMEIECRITGTLNGVEFELVGGGEGTPEQGRMTNKMSTKGALTFSPYLLSHV
 MGYGFYHFGTYPSTYENPFLHAINNGGYNTRIEKYEDGGVLHVSFSYRYEAGRVIGDFKVMGTGFPED
 SVIFTDKIIRSNTAVEHLHPMGDNDLDGSFTRTFSLRDGGYSSVVDSHMHFKSAIHPSILQNGGPMFA
 FRRVEEDHSNTELGIVEYQHAFKTPDADAGEERV

Restriction Sites: SgfI-MluI

Cloning Scheme:



ACCN: NM_001278199

ORF Size: 1206 bp

OTI Disclaimer: The molecular sequence of this clone aligns with the gene accession number as a point of reference only. However, individual transcript sequences of the same gene can differ through naturally occurring variations (e.g. polymorphisms), each with its own valid existence. This clone is substantially in agreement with the reference, but a complete review of all prevailing variants is recommended prior to use. [More info](#)

OTI Annotation: This clone was engineered to express the complete ORF with an expression tag. Expression varies depending on the nature of the gene.

Components: The ORF clone is ion-exchange column purified and shipped in a 2D barcoded Matrix tube containing 10ug of transfection-ready, dried plasmid DNA (reconstitute with 100 ul of water).

RefSeq: [NM_001278199.1](#), [NP_001265128.1](#)

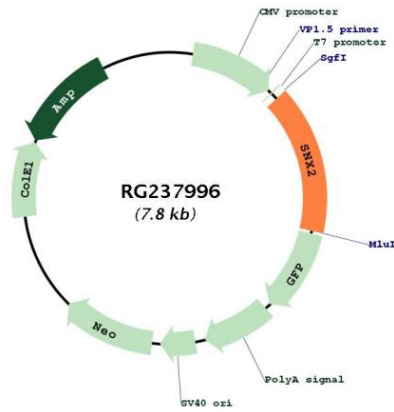
RefSeq Size: 7110 bp

RefSeq ORF: 1209 bp
 Locus ID: 6643
 UniProt ID: [O60749](#)

Cytogenetics: 5q23.2
 MW: 46.5 kDa

Gene Summary: This gene belongs to the sorting nexin family whose members contain the phosphoinositide-binding phox (PX) domain. The encoded protein is a component of the retromer complex which plays a role in protein sorting in the endocytic pathway. This protein may form oligomeric complexes with other family members. Alternate splicing results in multiple transcript variants of this gene. Pseudogenes associated with this gene are located on chromosomes 1 and 7. [provided by RefSeq, May 2013]

Product images:



Circular map for RG237996