

Product datasheet for **RG237979**

beta V Tubulin (TUBB) (NM_001293214) Human Tagged ORF Clone

Product data:

Product Type:	Expression Plasmids
Product Name:	beta V Tubulin (TUBB) (NM_001293214) Human Tagged ORF Clone
Tag:	TurboGFP
Symbol:	TUBB
Synonyms:	CDCBM6; CSCSC1; M40; OK/SW-cl.56; TUBB1; TUBB5
Mammalian Cell Selection:	Neomycin
Vector:	pCMV6-AC-GFP (PS100010)
E. coli Selection:	Ampicillin (100 ug/mL)
ORF Nucleotide Sequence:	>RG237979 representing NM_001293214. Blue=ORF Red=Cloning site Green=Tag(s)

```
GCTCGTTTGTAGTAACCGTCAGAATTTTGTAAACGACTCACTATAGGGCGCCGGGAATTCGTGACTG
GATCCGGTACCGAGGAGATCTGCCGCCGCGATCGCC
ATGAGGAAAATCGTGCACATCCAGGCTGGTGTGGCAAAATGTTTCTCGTGCCATCCTGGTGGAT
CTAGAACCTGGGACCATGGACTCTGTTTCGCTCAGGTCCTTTTGGCCAGATCTTTAGACCAGACAACCTT
GTATTTGGTCACTCTGGGCGAGTAACAACCTGGGCCAAAGGCCACTACACAGAGGGCGCCGAGCTGGTT
GATTCTGTCTGGATGTGGTACGGAAGGAGGCAGAGAGCTGTGACTGCCTGCAGGGCTTCCAGCTGACC
CACTCACTGGGCGGGGACAGGCTCTGGAATGGGCACTCTCCTTATCAGCAAGATCCGAGAAGAATAC
CCTGATCGCATCATGAATACCTTCAGTGTGGTGCCTTACCCAAAGTGTCTGACACCGTGGTCGAGCCC
TACAATGCCACCTCTCCGTCCATCAGTTGGTAGAGAATACTGATGAGACCTATTGCATTGACAACGAG
GCCCTCTATGATATCTGCTTCCGCACTCTGAAGCTGACCACACCAACCTACGGGGATCTGAACCACCTT
GTCTCAGCCACCATGAGTGGTGTACCACCTGCCTCCGTTTCCCTGGCCAGCTCAATGCTGACCTCCGC
AAGTTGGCAGTCAACATGGTCCCCTTCCACGCTCTCCATTTCTTTATGCCTGGCTTTGCCCTCTCACC
AGCCGTGGAAGCCAGCAGTATCGAGCTCTCACAGTGCCGAACTCACCCAGCAGGTCTTCGATGCCAAG
AACATGATGGTGCCTGTGACCCCGCCACGGCCGATACCTCACCGTGGCTGCTGTCTCCGTGGTCCG
ATGTCCATGAAGGAGTTCGATGAGCAGATGCTTAACTGCAGAACAAAGACAGCAGTACTTTGTGGAA
TGGATCCCCAACAAATGTCAAGACAGCCGCTGTGACATCCCACCTCGTGGCTCAAGATGGCAGTCACC
TTCATTGGCAATAGCACAGCCATCCAGGAGCTTCAAGCGCATCTCGGAGCAGTCACTGCCATGTTC
CGCCGGAAGGCCCTTCTCCACTGGTACACAGGCGAGGGCATGGACGAGATGGAGTTCACCCAGGCTGAG
AGCAACATGAACGACCTCGTCTCTGAGTATCAGCAGTACCAGGATGCCACCGCAGAAGAGGAGGAGAT
TTCGGTGAAGGAGGCCGAAGAGGAGGCC
ACGCGTACGCGGCCGCTCGAG - GFP Tag - GTTTAAAC
```



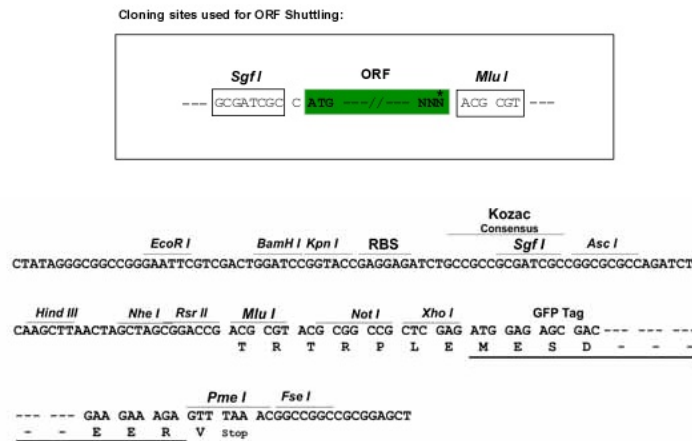
View online »

Protein Sequence: >Peptide sequence encoded by RG237979
 Blue=ORF Red=Cloning site Green=Tag(s)

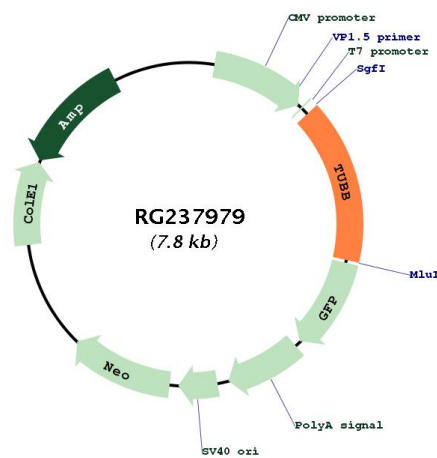
MREIVHIQAGQCCKYVPRAILVDLEPGTMSVRSQPFQIFRPDNFVFGQSGAGNNWAKGHYTEGAELV
 DSVLDVVRKEAESCDCQLQGFQLTHSLGGTGSGMGTLLISKIREEYPDRIMNTFSVVPSPKVSDEVVPEP
 YNATLSVHQLVENTDETYCIDNEALYDICFRTLKLTPTYGDLNHLVSATMSGVTTCLRFPGQLNADLR
 KLAVMVFPFRLHFFMPGFAPLTSRGSQQYRALTVPELTQQVFDKNNMAACDPRHGRYLTVAAVFRGR
 MSMKEVDEQMLNVQNKSSYFVEWIPNNVKTAVCDIPPRGLKMAVTFIGNSTAIQELFKRISEQFTAMF
 RRKAFLHWYTGEGMDEMEFTEAESNMNDLVSEYQQYQDATAEEEEEDFGEEAEAAA
TRTRPLEMESDEGLPAMEIECRITGTLNGVEFELVGGEGTPEQGRMTNKMSTKGALTFSPYLLSHV
 MGYGFYHFGTYPSTYENPFLHAINNGGYNTRIEKYEDGGVLHVSFSYRYEAGRVIGDFKVMGTGFPED
 SVIFTDKIIRSNATVEHLHPMGDNDLDGSFTRTFSLRDGGYSSVVDSHMHFKSAIHPSILQNGGPMFA
 FRRVEEDHSNTELGIVEYQHAFKTPDADAGEERV

Restriction Sites: SgfI-MluI

Cloning Scheme:



Plasmid Map:



ACCN:	NM_001293214
ORF Size:	1200 bp
OTI Disclaimer:	The molecular sequence of this clone aligns with the gene accession number as a point of reference only. However, individual transcript sequences of the same gene can differ through naturally occurring variations (e.g. polymorphisms), each with its own valid existence. This clone is substantially in agreement with the reference, but a complete review of all prevailing variants is recommended prior to use. More info
OTI Annotation:	This clone was engineered to express the complete ORF with an expression tag. Expression varies depending on the nature of the gene.
Components:	The ORF clone is ion-exchange column purified and shipped in a 2D barcoded Matrix tube containing 10ug of transfection-ready, dried plasmid DNA (reconstitute with 100 ul of water).
RefSeq:	NM_001293214.2
RefSeq Size:	2556 bp
RefSeq ORF:	1203 bp
Locus ID:	203068
UniProt ID:	P07437
Cytogenetics:	6p21.33
Protein Families:	Druggable Genome
Protein Pathways:	Gap junction, Pathogenic Escherichia coli infection
MW:	45.3 kDa
Gene Summary:	This gene encodes a beta tubulin protein. This protein forms a dimer with alpha tubulin and acts as a structural component of microtubules. Mutations in this gene cause cortical dysplasia, complex, with other brain malformations 6. Alternative splicing results in multiple splice variants. There are multiple pseudogenes for this gene on chromosomes 1, 6, 7, 8, 9, and 13. [provided by RefSeq, Jun 2014]