

Product datasheet for **RG237962**

HHLA2 (NM_001282558) Human Tagged ORF Clone

Product data:

Product Type:	Expression Plasmids
Product Name:	HHLA2 (NM_001282558) Human Tagged ORF Clone
Tag:	TurboGFP
Symbol:	HHLA2
Synonyms:	B7-H5; B7-H7; B7H7; B7y
Mammalian Cell Selection:	Neomycin
Vector:	pCMV6-AC-GFP (PS100010)
E. coli Selection:	Ampicillin (100 ug/mL)
ORF Nucleotide Sequence:	>RG237962 representing NM_001282558. Blue=ORF Red=Cloning site Green=Tag(s)

```
GCTCGTTTGTAGTAACCGTCAGAATTTGTAAACGACTCACTATAGGGCGCCGGGAATTCGTCGACTG
GATCCGGTACCGAGGAGATCTGCCGCCGCGATCGCC
ATGAAGGCACAGACAGCACTGTCTTTCTTCTCATTCTCATAACATCTCTGAGTGGATCTCAAGGCATA
TTCCCTTTGGCTTTCTTCATTTATGTTCTATGAATGAACAAATCGTCATTGGAAGACTTGATGAAGAT
ATAATTCTCCCTTCTTCATTTGAGAGGGGATCCGAAGTCGTAATACACTGGAAGTATCAAGATAGCTAT
AAGTTTACAGTTACTACAAAGGCAGTGACCATTTGGAAAGCCAAGATCCCAGATATGCAACAGGACA
TCCCTTTTCTATAATGAGATTCAAATGGGAATGCGTCGCTATTTTTCAGAAGAGTAAGCCTTCTGGAC
GAAGGAATTTACACCTGCTATGTAGGAACAGCAATTCAAGTGATTACAAACAAAGTGGTGTAAAGGTG
GGAGTTTTTCTCACACCCGTGATGAAGTATGAAAAGAGGAACACAAACAGCTTCTTAATATGCAGCGTG
TTAAGTGTATCCTCGTCCAATTATCACGTGGAAAATGGACAACACACCTATCTCTGAAAAACAATG
GAAGAAACAGGGTCTTTGGATTCTTTTTCTATTAACAGCCCACTGAATATTACAGGATCAAATTCATCT
TATGAATGTACAATTGAAAATTCAGTGTGAAGCAAACATGGACAGGGCGCTGGACGATGAAAGATGGC
CTTCATAAAATGCAAAGTGAACACGTTTCACTCTCATGTCAACCTGTAATGATTATTTTTACCAAAC
CAAGACTTCAAAGTTACTTGGTCCAGAATGAAAAGTGGGACTTTCTCTGTCTGGCTTACTATCTGAGC
TCCTCACAAAATACAATTATCAATGAATCCCGATTCTCATGGAACAAAGAGCTGATAAACCAGAGTGAC
TTCTCTATGAATTTGATGGATCTTAATCTTTTCAGACAGTGGGGAATATTTATGCAATATTTCTTCGGAT
GAATATACTTTACTTACCATCCACACAGTGCATGTAGAACCAGCAAGAAACAGCTTCCATAACAAA
GGCTTATGGATTTTGGTCCCTCTGCGATTTTGGCAGCTTTTCTGCTGATTTGGAGCGTAAAATGTTGC
AGAGAAAGATGTTGTGTCCTCCTGGTGGAGCGCTGCCAGTGCACCCGATAATGGCGAAGAAAATGTG
CCTCTTTCAGGAAAAGTA
ACGCGTACGCGGCCGCTCGAG - GFP Tag - GTTTAAAC
```



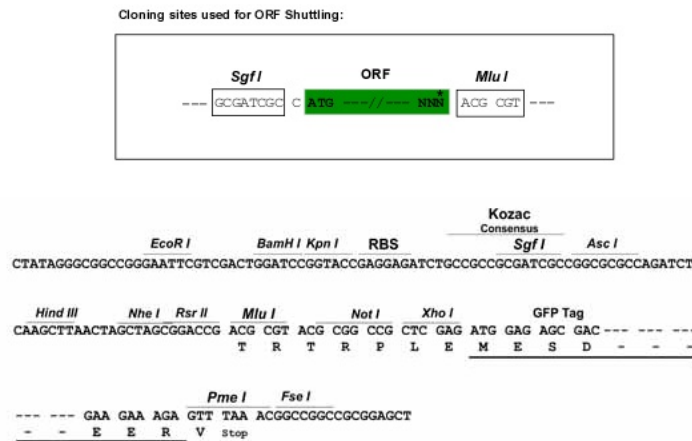
[View online »](#)

Protein Sequence: >Peptide sequence encoded by RG237962
 Blue=ORF Red=Cloning site Green=Tag(s)

MKAQTALSFLLILITSLSGSQGIFPLAFFIYVPMNEQIVIGRLDEDIILPSSFERGFSEVVIHWKYQDSY
 KVHSYYKGSDHLESQDPRYANRTSLFYNEIQNGNASLFRRVSLLDGIYTCYVGTAIQVITNKVVLKV
 GVFLTPVMKYEKRNTNSFLICSVLSVYPRPIITWKMDNTPISENNMEETGSLDSFSINSPLNITGSNSS
 YECTIENSLKQWTGRWTMKDGLHKMQSEHVLSLSCQPVNDYFSPNQDFKVTWSRMKSGTFVLAAYLS
 SSQNTIINE SRF SWNKELINQSDFSMNLMDLNLSDSGEYLCNISSDEYTLTIIHTVHVPEPSQETASHNK
 GLWILVPSAIIAAFLLIWSVKCCRERCCVPPGERCPSAPDNGEENVPLSGKV
TRTRPLEMESDEGLPAMEIECRITGTLNGVEFELVGGEGTPEQGRMTNKMSTKGALTFSPYLLSHV
 MGYGFYHFGTYPYSGYENPFLHAINNGGYNTRIEKYEDGGVLHVSFSYRYEAGRVIGDFKVMGTGFPED
 SVIFTDKIIRSNATVEHLHPMGDNDLDGSFTRTFSLRDGGYSSVVD SHMHFKSAIHPSILQNGGPMFA
 FRRVEEDHSNTELGIVEYQHAFKTPDADAGEERV

Restriction Sites: SgfI-MluI

Cloning Scheme:



ACCN: NM_001282558

ORF Size: 1191 bp

OTI Disclaimer: The molecular sequence of this clone aligns with the gene accession number as a point of reference only. However, individual transcript sequences of the same gene can differ through naturally occurring variations (e.g. polymorphisms), each with its own valid existence. This clone is substantially in agreement with the reference, but a complete review of all prevailing variants is recommended prior to use. [More info](#)

OTI Annotation: This clone was engineered to express the complete ORF with an expression tag. Expression varies depending on the nature of the gene.

Components: The ORF clone is ion-exchange column purified and shipped in a 2D barcoded Matrix tube containing 10ug of transfection-ready, dried plasmid DNA (reconstitute with 100 ul of water).

RefSeq: [NM_001282558.1](#), [NP_001269487.1](#)

RefSeq Size: 2515 bp

RefSeq ORF: 1194 bp
 Locus ID: 11148
 UniProt ID: [Q9UM44](#)

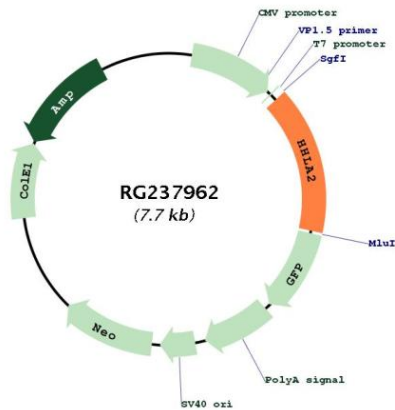
Cytogenetics: 3q13.13

Protein Families: Transmembrane

MW: 45.4 kDa

Gene Summary: This gene encodes a protein ligand found on the surface of monocytes. The encoded protein is thought to regulate cell-mediated immunity by binding to a receptor on T lymphocytes and inhibiting the proliferation of these cells. Alternate splicing results in multiple transcript variants. [provided by RefSeq, Sep 2013]

Product images:



Circular map for RG237962