

Product datasheet for **RG237936**

HNF 4 alpha (HNF4A) (NM_001287184) Human Tagged ORF Clone

Product data:

Product Type:	Expression Plasmids
Product Name:	HNF 4 alpha (HNF4A) (NM_001287184) Human Tagged ORF Clone
Tag:	TurboGFP
Symbol:	HNF4A
Synonyms:	FRTS4; HNF4; HNF4a7; HNF4a8; HNF4a9; HNF4alpha; MODY; MODY1; NR2A1; NR2A21; TCF; TCF-14; TCF14
Mammalian Cell Selection:	Neomycin
Vector:	pCMV6-AC-GFP (PS100010)
E. coli Selection:	Ampicillin (100 ug/mL)
ORF Nucleotide Sequence:	>RG237936 representing NM_001287184. Blue=ORF Red=Cloning site Green=Tag(s)

```
GCTCGTTTAGTGAACCGTCAGAATTTTGTAAATACGACTCACTATAGGGCGGCCGGGAATTCGTCGACTG
GATCCGGTACCGAGGAGATCTGCCGCCGCGATCGCC
ATGTCGGACTGGGGCCAGGGCTTCCCCAGGACCCACCAGACACGTCCCCATCAGAAGGCACCAACCTC
AACCGGCCAACAGCCTGGGTGTGACGCGCCTGTGTGCCATCTGCGGGGACCGGGCCACGGGCAACAC
TACGGTGCCTCGAGCTGTGACGGCTGCAAGGGCTTCTTCCGGAGGAGCGTGCGGAAGAACCACATGTAC
TCCTGCAGATTTAGCCGGCAGTGCCTGGTGGACAAAGACAAGAGGAACCAGTGCCGCTACTGCAGGCTC
AAGAAATGCTTCCGGGCTGGCATGAAGAAGGAAGCCGTCCAGAATGAGCGGGACCGGATCAGCACTCGA
AGGTCAAGCTATGAGGACAGCAGCTGCCCTCCATCAATGCGCTCCTGCAGGCGGAGGTCTGTCCCGA
CAGATCACCTCCCCGTCTCCGGGATCAACGGCGACATTCGGGCGAAGAAGATTGCCAGCATCGCAGAT
GTGTGTGAGTCCATGAAGGAGCAGCTGCTGGTTCTCGTTGAGTGGCCAAGTACATCCCAGCTTTCTGC
GAGCTCCCCCTGGACGACCAGGTGGCCCTGCTCAGAGCCCATGCTGGCGAGCACCTGCTGCTCGGAGCC
ACCAAGAGATCCATGGTGTTCAGGACGTGCTGCTCCTAGGCAATGACTACATTGTCCTCGGCACTGC
CCGGAGCTGGCGGAGATGAGCCGGGTGTCCATACGCATCCTTGACGAGCTGGTGTGCCCTTCCAGGAG
CTGCAGATCGATGACAATGAGTATGCCTACCTCAAAGCCATCATCTTCTTTGACCCAGATGCCAAGGGG
CTGAGCGATCCAGGGAAGATCAAGCGGCTGCGTTCAGGTGCAGGTGAGCTTGGAGGACTACATCAAC
GACCGCCAGTATGACTCGCGTGGCCGCTTTGGAGAGCTGCTGCTGCTGCTGCCACCTTGACAGAGCATC
ACCTGGCAGATGATCGAGCAGATCCAGTTCATCAAGCTCTTCGGCATGGCCAAGATTGACAACTGTTG
CAGGAGATGCTGCTGGGAGTCCGTGCCAAGCCAGGAGGGCGGGGTTGGAGTGGGACTCCCCAGGA
GACAGGCCTCACACAGTGAAGTCAACCCCTCAGCTCCTTGCTTCCCCACTGTGCCCTTTGGCAAGTT
GCT
ACGCGTACGCGGCCGCTCGAG - GFP Tag - GTTTAAAC
```



[View online »](#)

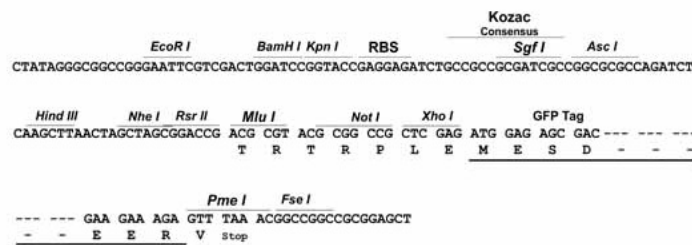
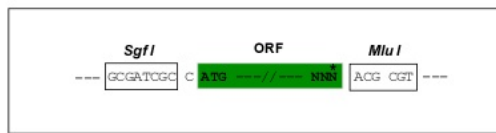
Protein Sequence: >Peptide sequence encoded by RG237936
 Blue=ORF Red=Cloning site Green=Tag(s)

MSDWGQGFPPDPTSPSEGTNLNAPNSLGVLSALCAICGDRATGKHYGASSCDGCKGFFRRSVRKNHMY
 SCRFSRQCVDKDKRNQCRYCRLKCFRAGMKKEAVQNERDRISTRSSYEDSSLPSINALLQAEVLSR
 QITSPVSGINGDIRAKKIASIADVCESMKEQLLVLEWAKYIPAFCELPDQVALLRAHAGEHLLLGA
 TKRSMVFKDVLVLLGNDYIVPRHCPLEAEMSRVSIIRILDELVLPFQELQIDDNEYAYLKAIFFPDAKG
 LSDPGKIKRLRSQVVSLEDYINDRQYDSRGRFGELLLLLPTLQSIWQMIQIQIKLFGMAKIDNLL
 QEMLLGGPCQAQEGRWGSDSPGDRPHTVSSPLSSLASPLCRFGQVA
TRTRPLEMESDESGLPAMEIECRITGTLNGVEFELVGGEGTPEQGRMTNKMSTKGALTFSPYLLSHV
 MGYGFYHFGTYPSTYENPFLHAINNGGYNTRIEKYEDGGVLHVSFSYRYEAGRVIGDFKVMGTGFPED
 SVIFTDKIIRSNTAVEHLHPMGDNDLDGSFTRTFSLRDGGYSSVVDSHMHFKSAIHPSILQNGGPMFA
 FRRVEEDHSNTELGIVEYQHAFKTPDADAGEERV

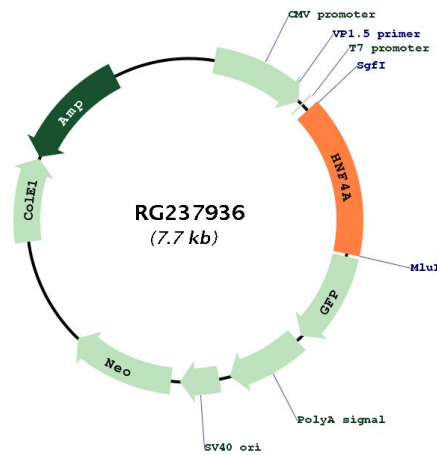
Restriction Sites: SgfI-MluI

Cloning Scheme:

Cloning sites used for ORF Shutting:



Plasmid Map:



ACCN:	NM_001287184
ORF Size:	1176 bp
OTI Disclaimer:	The molecular sequence of this clone aligns with the gene accession number as a point of reference only. However, individual transcript sequences of the same gene can differ through naturally occurring variations (e.g. polymorphisms), each with its own valid existence. This clone is substantially in agreement with the reference, but a complete review of all prevailing variants is recommended prior to use. More info
OTI Annotation:	This clone was engineered to express the complete ORF with an expression tag. Expression varies depending on the nature of the gene.
Components:	The ORF clone is ion-exchange column purified and shipped in a 2D barcoded Matrix tube containing 10ug of transfection-ready, dried plasmid DNA (reconstitute with 100 ul of water).
RefSeq:	NM_001287184.2
RefSeq Size:	1671 bp
RefSeq ORF:	1179 bp
Locus ID:	3172
UniProt ID:	P41235
Cytogenetics:	20q13.12
Protein Families:	Druggable Genome, ES Cell Differentiation/IPS, Nuclear Hormone Receptor, Transcription Factors
Protein Pathways:	Maturity onset diabetes of the young
MW:	44.3 kDa
Gene Summary:	The protein encoded by this gene is a nuclear transcription factor which binds DNA as a homodimer. The encoded protein controls the expression of several genes, including hepatocyte nuclear factor 1 alpha, a transcription factor which regulates the expression of several hepatic genes. This gene may play a role in development of the liver, kidney, and intestines. Mutations in this gene have been associated with monogenic autosomal dominant non-insulin-dependent diabetes mellitus type I. Alternative splicing of this gene results in multiple transcript variants encoding several different isoforms. [provided by RefSeq, Apr 2012]