

Product datasheet for **RG237905**

GABA A Receptor beta 3 (GABRB3) (NM_001278631) Human Tagged ORF Clone

Product data:

Product Type:	Expression Plasmids
Product Name:	GABA A Receptor beta 3 (GABRB3) (NM_001278631) Human Tagged ORF Clone
Tag:	TurboGFP
Symbol:	GABA A Receptor beta 3
Synonyms:	DEE43; ECA5; EIEE43
Mammalian Cell Selection:	Neomycin
Vector:	pCMV6-AC-GFP (PS100010)
E. coli Selection:	Ampicillin (100 ug/mL)
ORF Nucleotide Sequence:	>RG237905 representing NM_001278631. Blue=ORF Red=Cloning site Green=Tag(s)

```
GCTCGTTTGTAGTGAACCGTCAGAATTTGTAAACGACTCACTATAGGGCCGCCGGGAATTCGTCGACTG
GATCCGGTACCGAGGAGATCTGCCGCCGCGATCGCC
ATGATTTTTCAACAATATTGGAGAGATAAAAGGCTCGCCTATTCTGGGATCCCTCTCAACCTCACGCTT
GACAATCGAGTGGCTGACCAGCTATGGGTGCCGACACATATTTCTTAAATGACAAAAAGTCATTTGTG
CATGGAGTGACAGTGAAAAACCGCATGATCCGTCTTACCCTGATGGGACAGTGTGTATGGGCTCAGA
ATCACCACGACAGCAGCATGCATGATGGACCTCAGGAGATACCCCTGGACGAGCAGAACTGCACCTG
GAAATTGAAAGCTATGGCTACACCACGGATGACATTGAGTTTTACTGGCGAGGCGGGGACAAGGCTGTT
ACCGGAGTGGAAAGGATTGAGCTCCCGAGTTCTCCATCGTGGAGCACCGTCTGGTCTCGAGGAATGTT
GTCTTCGCCACAGGTGCCATACCTCGACTGTCACTGAGCTTTCGGTTGAAGAGGAACATTGGATACTTC
ATTCTTCAGACTTATATGCCCTCTATACTGATAACGATTCTGTCGTGGGTGTCCTTCTGGATCAATTAT
GATGCATCTGCTGCTAGAGTTGCCCTCGGGATCACAACCTGTGCTGACAATGACAACCATCAACCCAC
CTTCGGGAGACCTTGCCCAAAATCCCTATGTCAAAGCCATTGACATGTACCTTATGGGCTGCTTCGTC
TTTGTGTTCTGGCCCTTCTGGAGTATGCCTTTGTCAACTACATTTTCTTTGGAAGAGCCCTCAAAGG
CAGAAGAAGCTTGCAAAAAGACAGCCAAGGCAAAGAATGACCGTTCAAAGAGCGAAAGCAACCGGGTG
GATGCTCATGAAATATTCTGTTGACATCGCTGGAAGTTCACAATGAAATGAATGAGTCTCAGGCGGC
ATTGGCGATACCAGGAATTCAGCAATATCCTTTGACAACCTCAGGATCCAGTACAGGAAACAGAGCATG
CCTCGAGAAGGGCATGGGCGATTCTGGGGACAGAAGCCTCCCGCACAAGAAGACCCATCTACGGAGG
AGGTCTTCACAGCTCAAATTAATAACCTGATCTAACCGATGTGAATGCCATAGACAGATGGTCCAGG
ATCGTGTTCATTCACTTTTTCTTTTCAACTAGTTTACTGGCTGTACTATGTAAAC
ACGCGTACGCGGCCGCTCGAG - GFP Tag - GTTAAAC
```



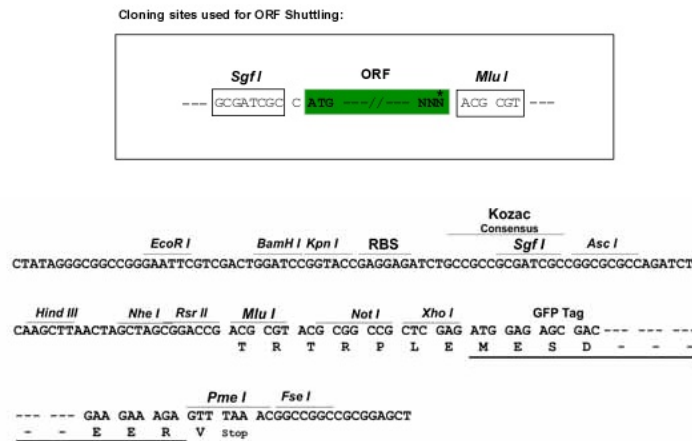
[View online »](#)

Protein Sequence: >Peptide sequence encoded by RG237905
 Blue=ORF Red=Cloning site Green=Tag(s)

MYFQQYWRDKRLAYSGIPLNLTLDNRVADQLWVPDITYFLNDKKSFVHGVTVKNRMIRLHPDGTVL YGLR
 ITTTAACMMDLRRYPLDEQNCTLEIESYGYTTDDIEFYWRGGDKAVTGVERIELPQFSIVEHRLVSRNV
 VFATGAYPRLSLSFRLKRNIYFILQTYMPSILITILSWVSFWINYDASAARVALGITTVLMTTINTH
 LRETLPKIPYVKAIDMYLMGCFVFLALLEYAFVNYIFFGRGPQRQKLAEKTAKAKNDRSKSESNRV
 DAHGNILLTSLVHNEMNEVSGGIGDTRNSAISFDNSGIQYRKQSMPEGHGRFLGDRSLPHKKTHLRR
 RSSQLKIKIPDLTDVNAIDRWSRIVFPFTFSLFNLVYWLYYVN
 TRTRPLEMESDEGLPAMEIECRITGTLNGVEFELVGGEGTPEQGRMTNKMSTKGALTFSPYLLSHV
 MGYGFYHFGTYPYSGYENPFLHAINNGGYNTRIEKYEDGGVLHVSFSYRYEAGRVIGDFKVMGTGFPED
 SVIFTDKIIRSNTAVEHLHPMGDNDLDGSFTRTFSLRDGGYSSVVDSHMHFKSAIHPSILQNGGPMFA
 FRRVEEDHSNTELGIVEYQHAFKTPDADAGEERV

Restriction Sites: SgfI-MluI

Cloning Scheme:



ACCN: NM_001278631

ORF Size: 1164 bp

OTI Disclaimer: The molecular sequence of this clone aligns with the gene accession number as a point of reference only. However, individual transcript sequences of the same gene can differ through naturally occurring variations (e.g. polymorphisms), each with its own valid existence. This clone is substantially in agreement with the reference, but a complete review of all prevailing variants is recommended prior to use. [More info](#)

OTI Annotation: This clone was engineered to express the complete ORF with an expression tag. Expression varies depending on the nature of the gene.

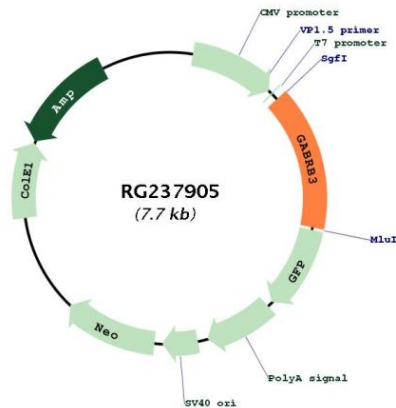
Components: The ORF clone is ion-exchange column purified and shipped in a 2D barcoded Matrix tube containing 10ug of transfection-ready, dried plasmid DNA (reconstitute with 100 ul of water).

RefSeq: [NM_001278631.1](#), [NP_001265560.1](#)

RefSeq Size: 5889 bp

RefSeq ORF:	1167 bp
Locus ID:	2562
UniProt ID:	P28472
Cytogenetics:	15q12
Protein Families:	Druggable Genome, Ion Channels: Cys-loop Receptors, Transmembrane
Protein Pathways:	Neuroactive ligand-receptor interaction
MW:	45.5 kDa
Gene Summary:	This gene encodes a member of the ligand-gated ionic channel family. The encoded protein is one the subunits of a multi-subunit chloride channel that serves as the receptor for gamma-aminobutyric acid, a major inhibitory neurotransmitter of the mammalian nervous system. This gene is located on the long arm of chromosome 15 in a cluster with two other genes encoding related subunits of the family. This gene may be associated with the pathogenesis of several disorders including Angelman syndrome, Prader-Willi syndrome, nonsyndromic orofacial clefts, epilepsy and autism. Alternatively spliced transcript variants encoding distinct isoforms have been described. [provided by RefSeq, Jul 2013]

Product images:



Circular map for RG237905