

Product datasheet for **RG237899**

WNT8A (NM_001300938) Human Tagged ORF Clone

Product data:

Product Type:	Expression Plasmids
Product Name:	WNT8A (NM_001300938) Human Tagged ORF Clone
Tag:	TurboGFP
Symbol:	WNT8A
Synonyms:	WNT8D
Mammalian Cell Selection:	Neomycin
Vector:	pCMV6-AC-GFP (PS100010)
E. coli Selection:	Ampicillin (100 ug/mL)
ORF Nucleotide Sequence:	>RG237899 representing NM_001300938. Blue=ORF Red=Cloning site Green=Tag(s)

```
GCTCGTTTGTAGTGAACCGTCAGAATTTTGTAAATACGACTCACTATAGGGCGCCGGGAATTCGTCGACTG
GATCCGGTACCGAGGAGATCTGCCGCCCGCATCGCC
ATGCTGTGCTGCATTCAGTGCCTCTGCCTGGTAAGTCCTTTCCCAACCCTCACTCCTTGCCAAGGAGGC
CCCCATTGTCTCATCCCCATTACCTCTGCCTCACTTTTTCTTTTTGGTAGGTCAGTGAACAATTTT
CTGATAACAGGTCCAAGGCCTATCTGACCTACACGACTAGTGTGGCCTGGGTGCCAGAGTGGCAGT
GAGGAGTGCAAGTTCCAGTTTGCTTGGGAACGCTGGAAGTCCCTGAAAATGCTCTTCAGCTCTCCACC
CACAACAGGCTGAGAAGTGTACCAGAGAGACTTCCTTCATACATGCTATCAGCTCTGCTGGAGTCATG
TACATCATCACCAAGAAGTGTAGCATGGGTGACTTCGAAAAGTGTGGCTGTGATGGTCAAACAATGGA
AAAACAGGAGGCCATGGCTGGATCTGGGGAGGCTGCAGCGACAATGTGGAATTTGGGAAAAGGATCTCC
AAACTCTTTGTGGACAGTTTGGAGAAGGGGAAGGATGCCAGAGCCCTGATGAATCTTCACAACAACAGG
GCCGGCAGACTGGCAGTGAAGCCACCATGAAAAGGACATGCAAAATGTCATGGCATCTCTGGGAGCTGC
AGCATACAGACATGCTGGCTGCAGCTGGCTGAATTCGGGAGATGGGAGACTACCTAAAGGCCAAGTAT
GACCAGGCGTGAAAATTGAAATGGATAAGCGGCAGCTGAGAGCTGGGAACAGCGCCGAGGGCCACTGG
GTGCCCGCTGAGGCCCTCCTTCTAGCGCAGAGGGCGGAAGTATCTTTTTAGAGGAATCACCAGATTAC
TGTACCTGCAATTCAGCCTGGGCATCTATGGCACAGAGGGTCTGAGTGCCTACAGAACAGCCACAAC
ACATCCAGGTGGGAGCGACGTAGCTGTGGCGCCTGTGCACTGAGTGTGGGCTGCAGGTGGAAGAGAGG
AAAATGAGGTCATAAGCAGCTGTAAGTCAAAATTCAGTGGTGTGTACGGTCAAGTGTGACCAGTGT
AGGCATGTGACCATGTCCAACCCAGCTGTGCTGTGGGAATCAGGAGAATAGAAGCAAAAAACGAAAGA
GTTCTGTTGACTTCTGAAGAGCAGCCTGTGGCTACAAATCTATGCTGATAAA
ACGCGTACGCGGCCGCTCGAG - GFP Tag - GTTTAAAC
```



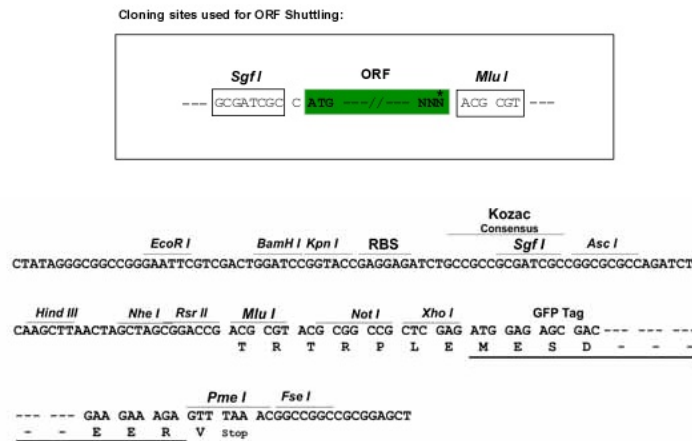
[View online »](#)

Protein Sequence: >Peptide sequence encoded by RG237899
 Blue=ORF Red=Cloning site Green=Tag(s)

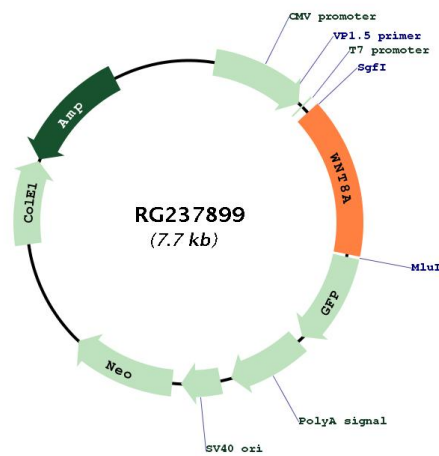
MLCCIQLCLVSPFPTLTPCQGGPHCLIPIHLCITFLFGRSVNNFLITGPKAYLTYTTSVALGAQSGI
 EECKFQFAWERWNCPENALQLSTHNRLRSATRETSFIHAISSAGVYIIITKNCMGMDFENCDCGSNNG
 KTGGHGIWGGSDNVEFGERISKLFVDSLEKGDARALMNLHNNRAGRLAVRATMKRTCKCHGISGSC
 SIQTCWLQLAEFREMGDYLKAKYDQALKIEMDKRQLRAGNSAEGHWVPAEAFLPsAEAEILFLEESPDY
 CTCNSSLGIYGTGRECLQNSHNTSRWERRSCGRCLCTECLQVEERKTEVISSCNCKFQWCCTVKCDQC
 RHVTMSNPAVLLGIRRIEAKNERVLFRLKSSWLQIYADK
 TRTRPLEMESDEGLPAMEIECRITGTLNGVEFELVGGEGTPEQGRMTNKMSTKGALTFSPYLLSHV
 MGYGFYHFGTYPsGYENPFLHAINNGGYNTRIEKYEDGGVLHVSFSYRYEAGRVIGDFKVMGTGFPEd
 SVIFTDKIIRS NATVEHLHPMGDNDLDGSFTRTFSLRDGGYSSVVD SHMHFKSAIHPSILQNGGPMFA
 FRRVEEDHSNTELGIVEYQHAFKTPDADAGEERV

Restriction Sites: SgfI-MluI

Cloning Scheme:



Plasmid Map:



ACCN:	NM_001300938
ORF Size:	1158 bp
OTI Disclaimer:	The molecular sequence of this clone aligns with the gene accession number as a point of reference only. However, individual transcript sequences of the same gene can differ through naturally occurring variations (e.g. polymorphisms), each with its own valid existence. This clone is substantially in agreement with the reference, but a complete review of all prevailing variants is recommended prior to use. More info
OTI Annotation:	This clone was engineered to express the complete ORF with an expression tag. Expression varies depending on the nature of the gene.
Components:	The ORF clone is ion-exchange column purified and shipped in a 2D barcoded Matrix tube containing 10ug of transfection-ready, dried plasmid DNA (reconstitute with 100 ul of water).
RefSeq:	NM_001300938.2
RefSeq Size:	1398 bp
RefSeq ORF:	1161 bp
Locus ID:	7478
UniProt ID:	Q9H1J5
Cytogenetics:	5q31.2
Protein Families:	Cancer stem cells, ES Cell Differentiation/IPS, Induced pluripotent stem cells, Secreted Protein, Stem cell relevant signaling - Wnt Signaling pathway
Protein Pathways:	Basal cell carcinoma, Hedgehog signaling pathway, Melanogenesis, Pathways in cancer, Wnt signaling pathway
MW:	43.7 kDa
Gene Summary:	The WNT gene family consists of structurally related genes which encode secreted signaling proteins. These proteins have been implicated in oncogenesis and in several developmental processes, including regulation of cell fate and patterning during embryogenesis. This gene is a member of the WNT gene family, and may be implicated in development of early embryos as well as germ cell tumors. Multiple alternatively spliced transcript variants have been found for this gene. [provided by RefSeq, Jul 2014]