

Product datasheet for **RG237893**

RIMKLB (NM_001297776) Human Tagged ORF Clone

Product data:

Product Type:	Expression Plasmids
Product Name:	RIMKLB (NM_001297776) Human Tagged ORF Clone
Tag:	TurboGFP
Symbol:	RIMKLB
Synonyms:	FAM80B; NAAGS; NAAGS-I
Mammalian Cell Selection:	Neomycin
Vector:	pCMV6-AC-GFP (PS100010)
E. coli Selection:	Ampicillin (100 ug/mL)
ORF Nucleotide Sequence:	>RG237893 representing NM_001297776. Blue=ORF Red=Cloning site Green=Tag(s)

```
GCTCGTTTGTAGTGAACCGTCAGAATTTTGTAAACGACTCACTATAGGGCGGCCGGGAATTCGTCGACTG
GATCCGGTACCGAGGAGATCTGCCGCCACGATCGCC
ATGTGTAGTTCTGTGGCTGCCAAGTTGTGGTTTTTGTGACAGATCGTCGCATCAGGGAAGACTATCCTCAA
AAAGAGATTTTACGAGCATTGAAGGCCAAATGTTGTGAGGAGGAACTGGACTTTAGGGCTGTGGTGATG
GATGAGGTGGTGTGACAATCGAGCAAGGAAACCTGGGTCTGCCGATCAATGGAGAGCTAATCACTGCC
TACCCACAAGTGGTGGTAGTCAGAGTACCAACCCCTTGGGTGCAAAGTGATAGTGACATCACTGTTTTG
CGCCATCTAGAGAAGATGGGATGTCGGTAAATGAACCGACCTCAAGCCATCCTGAACTGCGTTAATAAG
TTCTGGACATTTCAAGAGTTGGCTGGCCATGGTGTTCCTCTGCCGATACTTTCTCTTATGGTGGCCAC
GAAAATTTTGTAAAATGATTGATGAGGCTGAAGTTCTGGAGTTCCCAATGGTAGTAAAGAATACGCGG
GGTCACAGAGGTAAGCTGTTTTCTTGGCTCGAGATAAGCACCATTTGGCTGATCTAAGCCATCTTATT
CGCCATGAAGCGCCATACCTGTTCCAGAAGTATGTTAAAGAGTCTCATGGACGGGATGTACGTGTCATT
GTCGTGGGAGGCCGTGTGGTTGGCACCATGTTACGTTGTTCAACAGATGGGAGAAATGCAAAGCAACTGC
TCATTAGGTGGTGTGGGATGATGTGCTCATTGAGTGAACAAGGGAAGCAGCTAGCTATCCAGGTGTCT
AATATCCTGGGGATGGATGTGTGTTGGCATTGACCTGCTGATGAAAGATGACGGCTCCTTCTGCGTCTGT
GAGGCCAATGCAAATGTAGGTTTCATCGCCTTTGATAAGGCTTGAATCTAGATGTAGCTGGTATCATA
GCAGATGCGCCCTCCCTTACCCCTGCGCGGCTCACCCGGCGTATGTCCTGCTCCTCCGTGGTG
TCCACTGCCAGTGAGACTAGTGAGCCGGAGCTGGGTCCCCAGCCAGCACTGCTGTTGACAACATGAGT
GCAAGTCCAGCTCTGTTGACAGCGACCCTGAAAGCACGGAGCGAGAGCTGCTCACCAAGCTCCAGGG
GGCCTGTTCAACATGAACCAGCTGCTAGCCAATGAAATCAAACACTACTGGTGGAC
ACGCGTACGCGGCCGCTCGAG - GFP Tag - GTTTAAAC
```



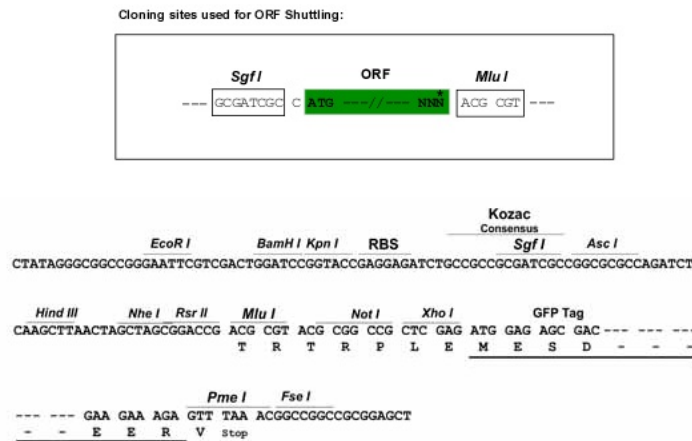
[View online »](#)

Protein Sequence: >Peptide sequence encoded by RG237893
 Blue=ORF Red=Cloning site Green=Tag(s)

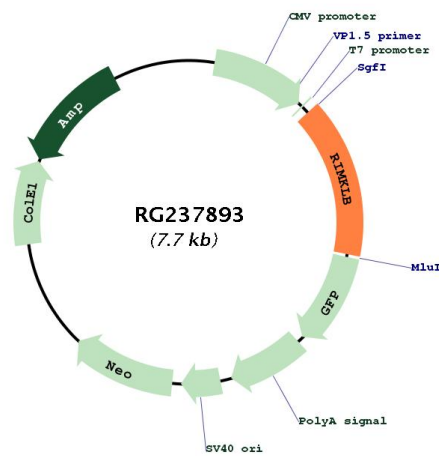
MCSSVAAKLWFLTDRRIREDYPQKEILRALKAKCCEEELDFRAVVMDEVLTIEQGNLGLRINGELITA
 YPQVVVVRVPTPWVQSDSDITVLRHLEKMGCRMLMNRPQAILNCVNKFWTFQELAGHGVPLPDTFSYGGH
 ENFAKMIDEAEVLEFPMVVKNTRGHRGKAVFLARDKHHLADLSHLIRHEAPYLFQKYVKESHGRDVRVI
 VVGGRVGTMLRCSTDGRMQSNCSLGGVGMCSLSEQKQLAIQVSNILGMDVCGIDLLMKDDGSFCVC
 EANANVGFIAFDKACNLDVAGIIADYAASLLPSGRLTRRMSLLSVVSTASETSEPELGPPASTAVDNMS
 ASSSSVSDPESTERELLTKLPGGLFNMNQLLANEIKLLVD
TRTRPLEMESDESGLPAMEIECRITGTLNGVEFELVGGEGTPEQGRMTNKMSTKGALTFSPYLLSHV
 MGYGFYHFGTYPSTYENPFLHAINNGGYNTRIEKYEDGGVLHVSFSYRYEAGRVIGDFKVMGTGFPED
 SVIFTDKIIRSNTAVEHLHPMGDNDLDGSFTRTFLRDGGYSSVVDSHMHFKSAIHPSILQNGGPMFA
 FRRVEEDHSNTELGIVEYQHAFKTPDADAGEERV

Restriction Sites: SgfI-MluI

Cloning Scheme:



Plasmid Map:



ACCN:	NM_001297776
ORF Size:	1158 bp
OTI Disclaimer:	The molecular sequence of this clone aligns with the gene accession number as a point of reference only. However, individual transcript sequences of the same gene can differ through naturally occurring variations (e.g. polymorphisms), each with its own valid existence. This clone is substantially in agreement with the reference, but a complete review of all prevailing variants is recommended prior to use. More info
OTI Annotation:	This clone was engineered to express the complete ORF with an expression tag. Expression varies depending on the nature of the gene.
Components:	The ORF clone is ion-exchange column purified and shipped in a 2D barcoded Matrix tube containing 10ug of transfection-ready, dried plasmid DNA (reconstitute with 100 ul of water).
RefSeq:	NM_001297776.1 , NP_001284705.1
RefSeq Size:	5037 bp
RefSeq ORF:	1161 bp
Locus ID:	57494
UniProt ID:	Q9ULI2
Cytogenetics:	12p13.31
MW:	42.5 kDa
Gene Summary:	Catalyzes the synthesis of beta-citryl-L-glutamate and N-acetyl-L-aspartyl-L-glutamate. Beta-citryl-L-glutamate is synthesized more efficiently than N-acetyl-L-aspartyl-L-glutamate. [UniProtKB/Swiss-Prot Function]