

Product datasheet for **RG237868**

Synaptotagmin V (SYT5) (NM_001297774) Human Tagged ORF Clone

Product data:

Product Type:	Expression Plasmids
Product Name:	Synaptotagmin V (SYT5) (NM_001297774) Human Tagged ORF Clone
Tag:	TurboGFP
Symbol:	Synaptotagmin V
Mammalian Cell Selection:	Neomycin
Vector:	pCMV6-AC-GFP (PS100010)
E. coli Selection:	Ampicillin (100 ug/mL)
ORF Nucleotide Sequence:	>RG237868 representing NM_001297774. Blue=ORF Red=Cloning site Green=Tag(s)

```
GCTCGTTTAGTGAACCGTCAGAATTTTGTAAACGACTCACTATAGGGCGGCCGGGAATTCGTCGACTG
GATCCGGTACCGAGGAGATCTGCCGCCGCGATCGCC
ATGACTCGCGGTGGCTGTCCGGTTTCTGCGCGGCTGTTGCGCGCAAAGGCCTCATGGGAGTTGGAGTTCT
TTGTTGTGCGTGGGGCTCAAAGGACGTCTGGGGTGGGAATGGGGGACTAGGGTGTGTTGAGTGTCTCTGC
AGAAAAGACTCCAGGACCCGCCACCATGTTCCCGGAGCCCCAACCCCGGGGCTCCATCGCCGACA
CGCCTCCCGACTCCAGTCGCATCAGCCACGGCCAGGTGCAGCCAGAAGTAGAGGAGCTGGAGCCAGCA
CCATCCGGGCCAGGGCAGCAGGTGGCAGACAAGCATGAGCTAGGACGACTGCAGTACTCCCTGGATTAT
GACTTCCAGAGTGGCCAGCTGCTGGTGGCATTCTGCAAGCAATGGGATTGGCAGCCTTGGATCTTGGT
GGCTCCTCGGACCCCTATGTGCGGGTCTACCTGCTGCCGACAAACGGAGGCGGTACGAGACCAAGGTG
CATCGGCAGACGCTGAACCCTCACTTTGGGGAGACCTTCGCCTTCAAGTCCCCTACGTGGAGCTGGGG
GGCAGGGTGTGGTATGGCGGTGTACGACTTCGACCGCTTCTCTCGCAATGACGCCATCGGGGAGGTG
CGGGTCCCTATGAGCTCCGTGGACCTGGGGCGGCCAGTGCAGGCCTGGCGGGAGCTGCAGGCGGCTCCG
CGGGAGGAGGAGAAGCTTGGGGACATCTGCTTCTCCCTCCGCTATGTCCCACGGCCGGGAAGCTCACC
GTCATCGTCTGGAGGCTAAAAACCTGAAGAAGATGGACGTAGGAGGACTGTCAGATCCATACGTCAAG
GTCCACCTGCTGCAGGGCGGCAAAAAGGTGCGGAAGAAGAAAACCACCATCAAGAAGAACACTCTGAAC
CCCTATTACAACGAAGCTTTCAGCTTCGAGGTGCCCTGTGACCAAGTCCAGAAGGTGCAGGTGGAGCTG
ACCGTGTGGACTACGACAAGCTGGGCAAGAACGAGGCCATCGGGAGGGTGGCCGTGGGGCGGCCGCC
GGCGGGGCTGGCCTGCGGCACTGGGCGGACATGCTGGCCAACCCGCGGGCCATTGCCAGTGGCAC
TCGCTGCGGCCCCCGGACCGAGTGAGGCTGCTGCCTGCGCCC
ACGCGTACGCGGCCGCTCGAG - GFP Tag - GTTTAAAC
```



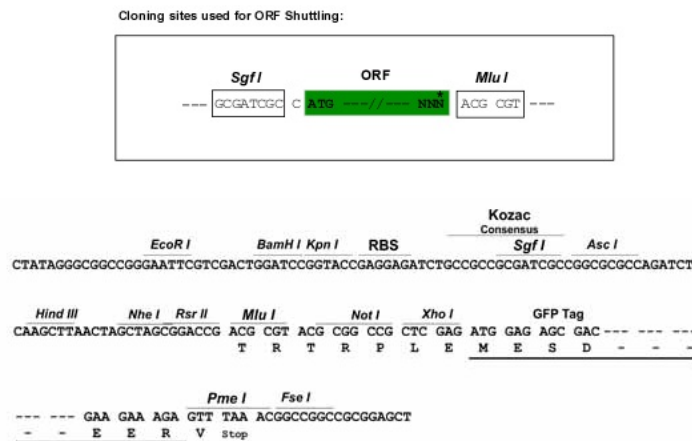
[View online »](#)

Protein Sequence: >Peptide sequence encoded by RG237868
 Blue=ORF Red=Cloning site Green=Tag(s)

MTRGGCPVSARLFAQRPHGWSWSSLLCVGLKGRLGWEWGTRVLECLCRKDSRTPPPCSRSPQPRGLHRPT
 RLPTPVASATAQVQPEVEEELPAPSGPGQVADKHELGRLOYSLDYDFQSGQLLVGILQAMGLAALDLG
 GSSDPYVRVYLLPDKRRRYETKVHRQTLNPHFGETF AFKVPYVELGGRVLMVAVYDFDRFSRNDAI GEV
 RYPMSSVDLGRP VQAWRELQAAPREEEKLGDICFSLRYVPTAGKLTIVIVLEAKNLKMDVGLSDPYVK
 VHLLQGGKKVRKKTTIKKNTLNPHYNEAFSFEVPCDQVQKVQVELTVLDYDKLGKNEAIGRVAVGAAA
 GGAGLRHWADMLANPRRPIAQWHSRLRPPDRVRLLPAP
 TRTRPLEMESDESGLPAMEIECRITGTLNGVEFELVGGEGTPEQGRMTNKMSTKGALTFSPYLLSHV
 MGYGFYHFGTYPYSGYENPFLHAINNGGYNTRIEKYEDGGVLHVSFSYRYEAGRVIGDFKVMGTGFPED
 SVIFTDKIIRSNATVEHLHPMGDNDLDGSFTRTFSLRDGGYSSVVD SHMHFKSAIHPSILQNGGPMFA
 FRRVEEDHSNTELGIVEYQHAFKTPDADAGEERV

Restriction Sites: SgfI-MluI

Cloning Scheme:



ACCN: NM_001297774

ORF Size: 1146 bp

OTI Disclaimer: The molecular sequence of this clone aligns with the gene accession number as a point of reference only. However, individual transcript sequences of the same gene can differ through naturally occurring variations (e.g. polymorphisms), each with its own valid existence. This clone is substantially in agreement with the reference, but a complete review of all prevailing variants is recommended prior to use. [More info](#)

OTI Annotation: This clone was engineered to express the complete ORF with an expression tag. Expression varies depending on the nature of the gene.

Components: The ORF clone is ion-exchange column purified and shipped in a 2D barcoded Matrix tube containing 10ug of transfection-ready, dried plasmid DNA (reconstitute with 100 ul of water).

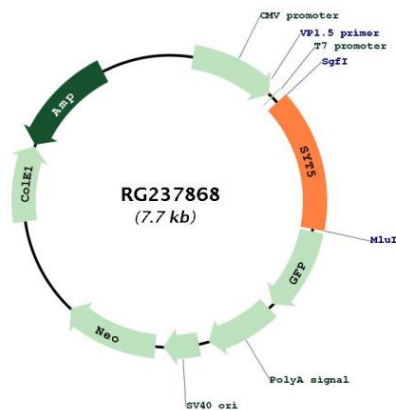
RefSeq: [NM_001297774.2](#)

RefSeq Size: 1797 bp

RefSeq ORF: 1149 bp
Locus ID: 6861
UniProt ID: [O00445](#)
Cytogenetics: 11p
Protein Families: Secreted Protein, Transmembrane
MW: 42.9 kDa

Gene Summary: Synaptotagmins, such as SYT5, are a family of type III membrane proteins characterized by cytoplasmic repeats related to protein kinase C (see MIM 176960) regulatory (C2) domains, which are thought to bind calcium. Synaptotagmins may act both as negative regulators of vesicle fusion, allowing fusion in the presence of calcium, and as calcium receptors or sensor molecules (summary by Hudson and Birnbaum, 1995 [PubMed 7597049]).[supplied by OMIM, Feb 2011]

Product images:



Circular map for RG237868