

Product datasheet for **RG237849**

PORCN (NM_001282167) Human Tagged ORF Clone

Product data:

Product Type:	Expression Plasmids
Product Name:	PORCN (NM_001282167) Human Tagged ORF Clone
Tag:	TurboGFP
Symbol:	PORCN
Synonyms:	DHOF; FODH; MG61; PORC; PPN
Mammalian Cell Selection:	Neomycin
Vector:	pCMV6-AC-GFP (PS100010)
E. coli Selection:	Ampicillin (100 ug/mL)
ORF Nucleotide Sequence:	>RG237849 representing NM_001282167. Blue=ORF Red=Cloning site Green=Tag(s)

```
GCTCGTTTGTAGTGAACCGTCAGAATTTTGTAAACGACTCACTATAGGGCGCCGGGAATTCGTCGACTG
GATCCGGTACCGAGGAGATCTGCCGCCGCGATCGCC
ATGGTTTGGGTCGTGCTGCTCAGCCTCCTGTGCTACCTCGTGCTGTTCTCTGCCGACATTCCTCCCAT
CGAGGGCTCTTCCATCCGTCACCATCCTCATCTACCTACTCATGGGTGAGATGCACATGGTAGACACC
GTGACATGGCACAAGATGCGAGGGGCACAGATGATTGTGGCCATGAAGGCAGTGTCTCTGGGCTTCGAC
CTGGACCGGGGCGAGGTGGGTACGGTGCCTCGCCAGTGGAGTTCATGGGCTACCTCTACTTCGTGGGC
ACCATCGTCTTCGGGCCCTGGATATCCTTCCACAGCTACCTACAAGCTGTCCAAGGCCGCCACTGAGC
TGCCGGTGGCTGCAGAAGGTGGCCGGAGCCTGGCACTGGCCCTGCTGTGCCTTGTGCTGTCCACTTGC
GTGGGCCCTACCTCTTCCCGTACTTCATCCCCCTCAACGGTGACCGCCTCCTTCGCAAGTGGCTGCGA
GCCTACGAGAGTGTCTCTCTTCCACTTCAGCAACTATTTTGTGGGCTTTCTTTCCGAGGCCACGGCC
ACGTTGGCGGGGCTGGCTTTACCGAGGAGAAGGATCACCTGGAATGGGACCTGACGGTGTCCAAGCCA
CTGAATGTGGAGCTGCCTCGGTCAATGGTGAAGTTGTCAAGCTGGAACCTGCCCATGTCTTATTGG
CTAAATAACTATGTTTTCAAGAATGCTCTCCGCTGGGGACCTTCTCGGCTGTGCTGGTCACTATGCA
GCCAGCGCCCTCTACATGGCTTCAGTTCCACCTGGCTGCGGTCTGCTGTCCCTGGCTTTTATCACT
TACGTGGAGCATGTCTCCGGAAGCGCCTGGCTCGGATCCTCAGTGCCTGTGCTTGTCAAAGCGGTGC
CCGCCAGACTGTTCCGACCAGCATCGCTTGGCCCTGGGGTGGCAGCCTAAACTTGCTCTTTGGAGCT
CTGGCCATCTTCCACCTGGCCTACCTGGGCTCCCTGTTTGTGATGTGATGTGGATGACACCACAGAGGAG
CAGGGCTACGGCATGGCATACTGTCCACAAGTGGTCAGAGCTCAGCTGGGCCAGTCACTGGTCACT
TTTGGATGCTGGATCTTCTACCGTCTCATAGGC
ACGCGTACGCGGCCGCTCGAG - GFP Tag - GTTTAAAC
```



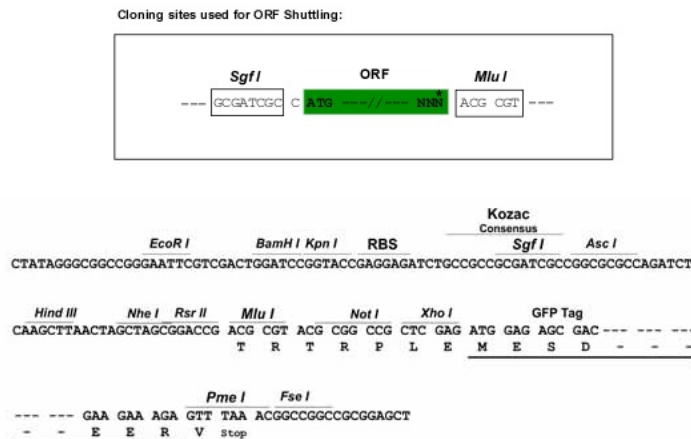
[View online »](#)

Protein Sequence: >Peptide sequence encoded by RG237849
 Blue=ORF Red=Cloning site Green=Tag(s)

MVWVLLSLLCYLVLFLCRHSSHRGVFLSVTIL IYLLMGEMHMVDTVTWHKMRGAQMIVAMKAVSLGFD
 LDRGEVGTVPSPVEFMGYLYFVGTIVFGPWISFHSYLQAVQGRPLSCRWLQKVARSLALALLCLVLSTC
 VGPYLFPPYFIPLNGDRLLRKWL RAYESAVSFHF SNYFVGFLSEATATLAGAGFTEEKDHLWDLTVSKP
 LNVELPRSMVEVVTWNLPMSYWLNNYVFKNALRLGTFSAVLVTYAASALLHGFSFHLLAAVLLSLAFIT
 YVEHVLKRLARILSACVLSKRPPDCSHQHRLGLGVRALNLLFGALAI FHFLAYL GSLFDVDVDDTTEE
 QGYGMAYTVHKWSEL SWASHWVTFGCWIF YRLIG
TRTRPLEMESDESGLPAMEIECRITGTLNGVEFELVGGEGTPEQGRMTNKMSTKGALTFSPYLLSHV
 MGYGFYHFGTYP SGYENPFLHAINNGGYNTRIEKYEDGGVLHVSFSYRYEAGRVIGDFKVMGTGFPEP
 SVIFTDKIIRSNATVEHLHPMGDNDLDGSFTRTFLRDGGYSSVVD SHMHFKSAIHP SILQNGGPMFA
 FRRVEEDHSNTELGIVEYQHAFKTPDADAGEERV

Restriction Sites: SgfI-MluI

Cloning Scheme:



ACCN: NM_001282167

ORF Size: 1137 bp

OTI Disclaimer: The molecular sequence of this clone aligns with the gene accession number as a point of reference only. However, individual transcript sequences of the same gene can differ through naturally occurring variations (e.g. polymorphisms), each with its own valid existence. This clone is substantially in agreement with the reference, but a complete review of all prevailing variants is recommended prior to use. [More info](#)

OTI Annotation: This clone was engineered to express the complete ORF with an expression tag. Expression varies depending on the nature of the gene.

Components: The ORF clone is ion-exchange column purified and shipped in a 2D barcoded Matrix tube containing 10ug of transfection-ready, dried plasmid DNA (reconstitute with 100 ul of water).

RefSeq: [NM_001282167.2](#)

RefSeq Size: 2018 bp

RefSeq ORF: 1140 bp

Locus ID: 64840

UniProt ID: [Q9H237](#)

Cytogenetics: Xp11.23

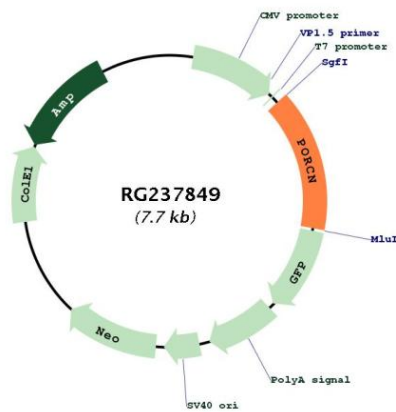
Protein Families: Transmembrane

Protein Pathways: Wnt signaling pathway

MW: 43.3 kDa

Gene Summary: This gene belongs to the evolutionarily conserved porcupine (Porc) gene family. Genes of the porcupine family encode endoplasmic reticulum proteins with multiple transmembrane domains. Porcupine proteins are involved in the processing of Wnt (wingless and int homologue) proteins. Disruption of this gene is associated with focal dermal hypoplasia, and the encoded protein has been implicated in cancer. Multiple alternatively spliced transcript variants encoding distinct isoforms have been observed. [provided by RefSeq, Aug 2013]

Product images:



Circular map for RG237849