

Product datasheet for **RG237847**

CERD4 (DPF3) (NM_001280542) Human Tagged ORF Clone

Product data:

Product Type:	Expression Plasmids
Product Name:	CERD4 (DPF3) (NM_001280542) Human Tagged ORF Clone
Tag:	TurboGFP
Symbol:	CERD4
Synonyms:	BAF45C; CERD4
Mammalian Cell Selection:	Neomycin
Vector:	pCMV6-AC-GFP (PS100010)
E. coli Selection:	Ampicillin (100 ug/mL)
ORF Nucleotide Sequence:	>RG237847 representing NM_001280542. Blue=ORF Red=Cloning site Green=Tag(s)

```
GCTCGTTTGTAGTGAACCGTCAGAATTTTGTAAACGACTCACTATAGGGCGCCGGGAATTCGTCGACTG
GATCCGGTACCGAGGAGATCTGCCGCCGCGATCGCC
ATGGCGACTGTCAATTCACAACCCCTGAAAGCGCTCGGGGACCAGTTCTACAAGGAAGCCATTGAGCAC
TGCCGGAGTTACAACCTACGGCTGTGTGCAGAGCGCAGCGTGCCTTCCCTTCTGGACTCACAGACT
GGGGTGGCCAGAACAACCTGCTACATCTGGATGGAGAAGAGGCACCGAGGCCAGGCCTGCCCCGGGC
CAGCTGTATACATACCCTGCCCGCTGCTGGCGCAAGAAGAGACGATTGCACCCACCTGAAGATCCAAAA
CTGCGGCTGCTGGAGATAAACCTGAAGTGGAGCTTCCCTGAAGAAGGATGGGTTACCTCAGAGAGC
ACCACGCTGGAAGCCTTGCTCCGTGGCGAGGGGTTGAGAAGAAGGTGGATGCCAGGGAGGAGGAAAGC
ATCCAGGAAATACAGAGGGTTTTGGAAAATGATGAAAATGTAGAAGAAGGGAATGAAGAAGAGGATTTG
GAAGAGGATATCCCAAGCGAAAGAACAGGACTAGAGGACGGGCTCGCGGCTCTGCAGGGGCGAGGAGG
AGGCACGACGCCGCTCTCAGGAAGACCACGACAAACCTTACGTCTGTGACATCTGTGGCAAGCGTAC
AAGAACCAGCCGGGCTCAGCTACCACTATGCTCACACTCACCTGGCCAGCGAGGAGGGGATGAAGCT
CAAGACCAGGAGACTCGGTCCCCACCAACCACAGAAATGAGAACCACAGGCCCCAGAAAGGACCGGAT
GGAACAGTCATTCCCAATAACTACTGTGACTTCTGCTTGGGGGCTCCAACATGAACAAGAAGAGTGGG
CGGCTGAAGAGCTGGTCTCTGCGCAGACTGTGGACGCTCTGGTCACCAACCTGCCTGCAGTTTACC
CTGAACATGACCGAGGCTGTCAAGACCTACAAGTGGCAGTGCATAGAGTGCAAATCCTGTATCCTCTGT
GGGACCTCAGAGAATGATGACCAGCTACTTCTGCGATGACTGTGACCGAGGCTATCACATGTAAGTGT
TTAAATCCCCCGGTGGCTGAGCCCCAGAAGGAGCTGGAGCTGCCACTTATGCTGGAACTGCTCAAA
GAGAAAGCCTCAGCCTTTGGCTGCCAGGCC
ACGCGTACGCGGCCGCTCGAG - GFP Tag - GTTTAAAC
```



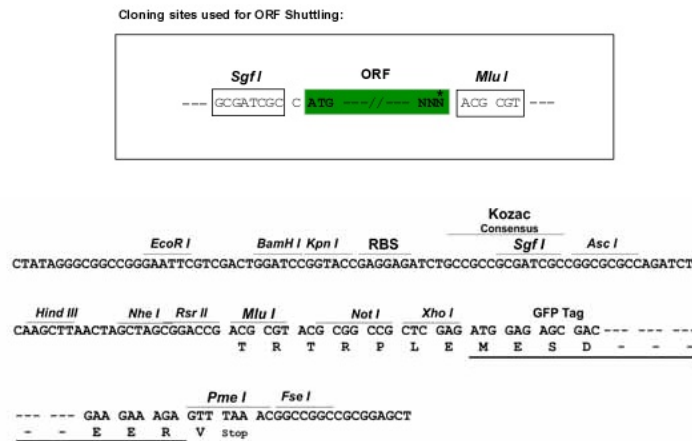
[View online »](#)

Protein Sequence: >Peptide sequence encoded by RG237847
 Blue=ORF Red=Cloning site Green=Tag(s)

MATVIHNPLKALGDQFYKEAIEHCRSYNSRLCAERSVRLPFLDSQTGVAQNNCYIWMEKRHRGPGPLAPG
 QLYTYPARCWRRKRRLHPPEDPKLRLLEIKPEVELPLKKGDFTSESTTLEALLRGEGVEKKVDAREEES
 IQEIQRVLENDENVEEGNEEEDLEEDIPKRKNRTRGRARGSAGRRRRHDAASQEDHDKPYVCDICGKRY
 KNRPGLSYHYAHTHLASEEGDEAQQDQETRSPPNHRNENHRPQKGPDTVIPNNYCDFCLGGSNMNKKSG
 RPEELVSCADCGRSGHPTCLQFTLNMTEAVKTYKWQCIIECKSCILCGTSENDDQLLFCDCCDRGYHMYC
 LNPPVAEPPEGSWSCHLCWELLKEKASAFGCQA
 TRTRPLEMESDESGLPAMEIECRITGTLNGVEFELVGGGEGTPEQGRMTNKMSTKGALTFSPYLLSHV
 MGYGFYHFGTYPSTYENPFLHAINNGGYNTRIEKYEDGGVLHVSFSYRYEAGRVIGDFKVMGTGFPED
 SVIFTDKIIRSNATVEHLHPMGDNDLDGSFTRTFSLRDGGYSSVVDSHMHFKSAIHPSILQNGGPMFA
 FRRVEEDHSNTELGIVEYQHAFKTPDADAGEERV

Restriction Sites: SgfI-MluI

Cloning Scheme:



ACCN: NM_001280542

ORF Size: 1134 bp

OTI Disclaimer: The molecular sequence of this clone aligns with the gene accession number as a point of reference only. However, individual transcript sequences of the same gene can differ through naturally occurring variations (e.g. polymorphisms), each with its own valid existence. This clone is substantially in agreement with the reference, but a complete review of all prevailing variants is recommended prior to use. [More info](#)

OTI Annotation: This clone was engineered to express the complete ORF with an expression tag. Expression varies depending on the nature of the gene.

Components: The ORF clone is ion-exchange column purified and shipped in a 2D barcoded Matrix tube containing 10ug of transfection-ready, dried plasmid DNA (reconstitute with 100 ul of water).

RefSeq: [NM_001280542.1](#), [NP_001267471.1](#)

RefSeq Size: 1166 bp

RefSeq ORF: 1137 bp

Locus ID: 8110

UniProt ID: [Q92784](#)

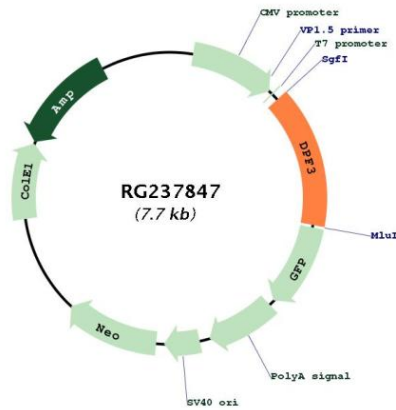
Cytogenetics: 14q24.2

Protein Families: Transcription Factors

MW: 43.5 kDa

Gene Summary: This gene encodes a member of the D4 protein family. The encoded protein is a transcription regulator that binds acetylated histones and is a component of the BAF chromatin remodeling complex. Alternate splicing results in multiple transcript variants encoding different isoforms. [provided by RefSeq, Jul 2013]

Product images:



Circular map for RG237847