

Product datasheet for **RG237845**

DLK2 (NM_001286656) Human Tagged ORF Clone

Product data:

Product Type:	Expression Plasmids
Product Name:	DLK2 (NM_001286656) Human Tagged ORF Clone
Tag:	TurboGFP
Symbol:	DLK2
Synonyms:	DLK-2; EGFL9
Mammalian Cell Selection:	Neomycin
Vector:	pCMV6-AC-GFP (PS100010)
E. coli Selection:	Ampicillin (100 ug/mL)
ORF Nucleotide Sequence:	>RG237845 representing NM_001286656. Blue=ORF Red=Cloning site Green=Tag(s)

```
GCTCGTTTGTAGTGAACCGTCAGAATTTTGTAAACGACTCACTATAGGGCGCCGGGAATTCGTGACTG
GATCCGGTACCGAGGAGATCTGCCGCCGCGATCGCC
ATGCCAGCGGCTGCCGCTGCCTGCATCTCGTGTGCCTGTTGTGCATTCTGGGGCTCCCGTCAAGCCT
GTCCGAGCCGATGACTGCAGCTCCCACTGTGACCTGGCCACGGCTGCTGTGCACCTGACGGCTCCTGC
AGGTGTGACCCGGGCTGGGAGGGGCTGCACTGTGAGCGCTGTGTGAGGATGCCTGGCTGCCAGCAGGT
ACCTGCCACCAGCCATGGCAGTGCATCTGCCACAGTGGCTGGCAGATGAACATATCTGTACCACGCAG
TCCCCCTGCCAGAATGGAGGCCAGTGCATGTATGACGGGGCGGTGAGTACCATTGTGTGTGCTTACCA
GGCTTCCATGGGCGTACTGCGAGCGCAAGGCTGGACCCTGTGAACAGGCAGGCTCCCCATGCCGCAAT
GGCGGGCAGTGCCAGGACGACCAGGGCTTTGCTCTCAACTTACAGTGCCGCTGCTTGGTGGGCTTTGTG
GGTGCCCGCTGTGAGGTAATGTGGATGACTGCCTGATGCGGCCTTGTGCTAACGGTGCCACCTGCCTT
GACGGCATAAACCGCTTCTCCTGCCTCTGTCTGAGGGCTTTGCTGGACGCTTCTGCACCATCAACCTG
GATGACTGTGCCAGCCGCCATGCCAGAGAGGGGCCCGCTGTCCGGACCGTGTCCACGACTTCGACTGC
CTCTGCCCCAGTGGCTATGGTGGCAAGACCTGTGAGCTTGTCTTACCTGTCCCAGACCCCCAACACA
GTGGACACCCCTTAGGGCCACCTCAGCTGTAGTGGTACCTGCCACGGGGCCAGCCCCACAGCGCA
GGGGCTGGTCTGCTGCGGATCTCAGTGAAGGAGTGGTGGGAGGCAAGAGGCTGGGCTAGGTGAGCCT
AGCTTGGTGGCCCTGGTGGTGTGGGGCCCTCACTGCTGCCCTGTTCTGGCTACTGTGTTGCTGACC
CTGAGGGCTGGCGCCGGGTGTCTGCCCCCTGGACCCTGTTGCTACCCTGCCCCACACTATGCTCCA
GCGTGCCAGGACAGGAGTGTGAGGTTAGCATGCTGCCAGCAGGGCTCCCCCTGCCACGTGACTTGCCC
CCTGAGCCTGGAAAGACCACAGCACTG
ACGCGTACGCGGCCGCTCGAG - GFP Tag - GTTTAAAC
```



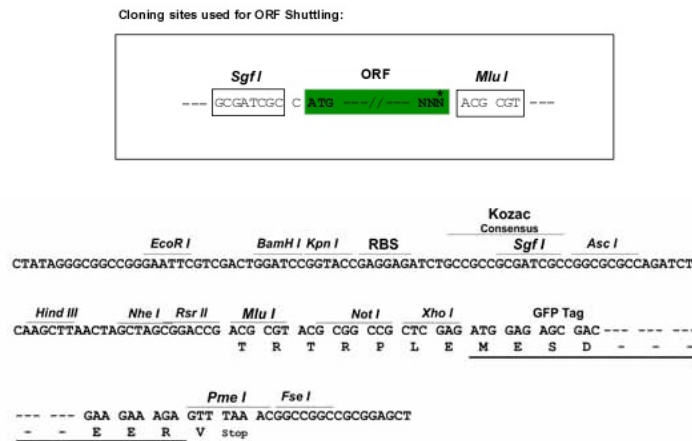
[View online »](#)

Protein Sequence: >Peptide sequence encoded by RG237845
 Blue=ORF Red=Cloning site Green=Tag(s)

MPSGCRCLHLVCLLCILGAPGQPVRADDCSSHCDLAHGCCAPDGSCRCDPGWEGLHCERCVRMPGCQHG
 TCHQPWQICHSWADEHICTTQSPCQNGGQCMYDGGGEYHCVCLPGFHGRDCERKAGPCEQAGSPCRN
 GGQCQDDQGFALNFTCRCLVGFVGARCEVNVDDCLMRPCANGATCLDGINRF SCLCPEGFAGRFCTINL
 DDCA SRPCQRGARCRDRVHDFDCLCP SGYGGKTC ELVLPVPDPPTTVDTPLGPTS AVVVPATGPAPHSA
 GAGLLRI SVKEV VRRQEAGLGEPSLVALVVF GALTAALVLATVLLTLRAWRRGVCP PGCCYPAPHYAP
 ACQDQEQVSMPLPAGLPLPRDL PPEPGKTAL
 TRTRPLEMESDESGLPAMEIECRITGTLNGVEFELVGGEGTPEQGRMTNKMSTKGALTFSPYLLSHV
 MGYGFYHFGTYP SGYENPFLHAINNGGYNTRIEKYEDGGVLHVSFSYRYEAGRVIGDFKVMGTGFPED
 SVIFTDKIIRSNATVEHLHPMGDNDLDGSFTRTFSLRDGGYSSVVD SHMHFKSAIHPSILQNGGPMFA
 FRRVEEDHSNTELGIVEYQHAFKTPDADAGEERV

Restriction Sites: SgfI-MluI

Cloning Scheme:



ACCN: NM_001286656

ORF Size: 1131 bp

OTI Disclaimer: The molecular sequence of this clone aligns with the gene accession number as a point of reference only. However, individual transcript sequences of the same gene can differ through naturally occurring variations (e.g. polymorphisms), each with its own valid existence. This clone is substantially in agreement with the reference, but a complete review of all prevailing variants is recommended prior to use. [More info](#)

OTI Annotation: This clone was engineered to express the complete ORF with an expression tag. Expression varies depending on the nature of the gene.

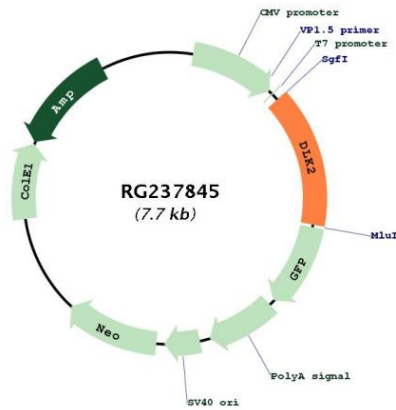
Components: The ORF clone is ion-exchange column purified and shipped in a 2D barcoded Matrix tube containing 10ug of transfection-ready, dried plasmid DNA (reconstitute with 100 ul of water).

RefSeq: [NM_001286656.2](#)

RefSeq Size: 1619 bp

RefSeq ORF: 1134 bp
 Locus ID: 65989
 UniProt ID: [Q6UY11](#)
 Cytogenetics: 6p21.1
 Protein Families: Druggable Genome, Transmembrane
 MW: 40.3 kDa
 Gene Summary: Regulates adipogenesis.[UniProtKB/Swiss-Prot Function]

Product images:



Circular map for RG237845