

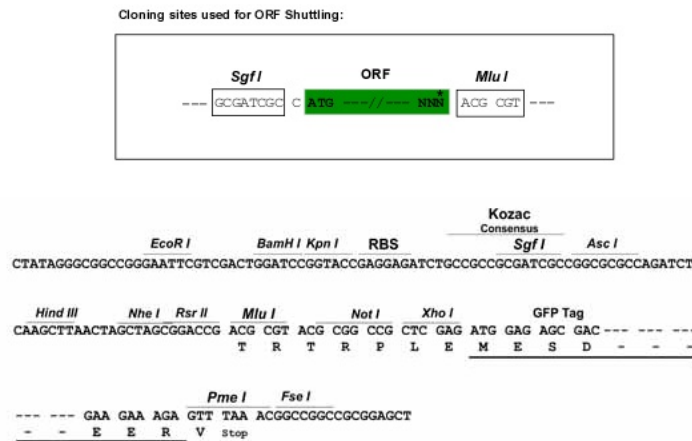


**Protein Sequence:** >Peptide sequence encoded by RG237827  
 Blue=ORF Red=Cloning site Green=Tag(s)

MNTSHLLALLLPKSPQGENRSKPLGTPYNFSEHCQDSVDVMVFIVTSYSIETVVGLGNLCLMCVTVRQ  
 KEKANVTNLLIANLAFSDFLMCLLCQPLTAVYTIMDYWIFGETLCKMSAFIQCMSVTVSILSLVLALE  
 RHQLIINPTGWKPSISQAYLGIWLIWVIACVLSLPLANSILENVFHKHNSKALEFLADKVVCTESWPL  
 AHHRTIYTTFLLLFYQCLPLGFILVCYARIYRRLQRQGRVFKGTYSLRAGHMKQVNVVLVMMVFAFV  
 LWLPLHVFNSLEDWHHEAIPICHGNLIFLVCHLLAMASTCVNPFYIGFLNTNFKKEIKALVLTCCQSAP  
 LEESEHLPLSTVHTEVSKGSLRLSGRSNPI  
 TRTRPLEMESDESGLPAMEIECRITGTLNGVEFELVGGEGTPEQGRMTNKMSTKGALTFSPYLLSHV  
 MGYGFYHFGTYPSTYENPFLHAINNGGYNTRIEKYEDGGVLHVSFSYRYEAGRVIGDFKVMGTGFPED  
 SVIFTDKIIRSNATVEHLHPMGDNDLDGSFTRTFSLRDGGYSSVVDSHMHFKSAIHPSILQNGGPMFA  
 FRRVEEDHSNTELGIVEYQHAFKTPDADAGEERV

**Restriction Sites:** SgfI-MluI

**Cloning Scheme:**



**ACCN:** NM\_001278795

**ORF Size:** 1125 bp

**OTI Disclaimer:** The molecular sequence of this clone aligns with the gene accession number as a point of reference only. However, individual transcript sequences of the same gene can differ through naturally occurring variations (e.g. polymorphisms), each with its own valid existence. This clone is substantially in agreement with the reference, but a complete review of all prevailing variants is recommended prior to use. [More info](#)

**OTI Annotation:** This clone was engineered to express the complete ORF with an expression tag. Expression varies depending on the nature of the gene.

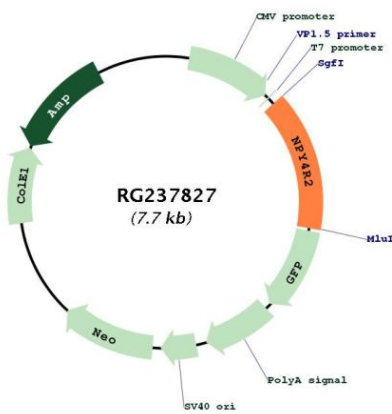
**Components:** The ORF clone is ion-exchange column purified and shipped in a 2D barcoded Matrix tube containing 10ug of transfection-ready, dried plasmid DNA (reconstitute with 100 ul of water).

**RefSeq:** [NM\\_001278795.2](#)

**RefSeq Size:** 1449 bp

RefSeq ORF: 1128 bp  
 Locus ID: 100996758  
 UniProt ID: [P50391](#)  
 Cytogenetics: 10q11.22  
 MW: 42.6 kDa  
 Gene Summary: Receptor for neuropeptide Y and peptide YY. The rank order of affinity of this receptor for pancreatic polypeptides is PP, PP (2-36) and [Ile-31, Gln-34] PP > [Pro-34] PYY > PYY and [Leu-31, Pro-34] NPY > NPY > PYY (3-36) and NPY (2-36) > PP (13-36) > PP (31-36) > NPY free acid. [UniProtKB/Swiss-Prot Function]

**Product images:**



Circular map for RG237827