

## Product datasheet for **RG237789**

### ZNF707 (NM\_001288806) Human Tagged ORF Clone

#### Product data:

Product Type:	Expression Plasmids
Product Name:	ZNF707 (NM_001288806) Human Tagged ORF Clone
Tag:	TurboGFP
Symbol:	ZNF707
Mammalian Cell Selection:	Neomycin
Vector:	pCMV6-AC-GFP (PS100010)
E. coli Selection:	Ampicillin (100 ug/mL)
ORF Nucleotide Sequence:	>RG237789 representing NM_001288806. Blue=ORF Red=Cloning site Green=Tag(s)

```
GCTCGTTTAGTGAACCGTCAGAATTTTGTAAACGACTCACTATAGGGCGGCCGGGAATTCGTCGACTG
GATCCGGTACCGAGGAGATCTGCCGCCGCGATCGCC
RCATGGCCCAGGAGCCAGTGACCTTCAGGGACGTGGCCATCTACTTCTCAAGGGAGGAGTGGGCGTGTC
TGGAAACCAGCCAGAGGGCCCTCTACCGGGACGTGATGCTGGACAACCTCAGCAGTGTGGCTGCTCTGG
GATTTTGCAGCCCCAGACCAGACCTCGTCTCTCGCCTGGAACAGTGGGAGGAGCCGTGGTTGAAGACC
GGGAGAGACCTGAGTTCCAGGCAGTGCAGAGGGGACCCCGCCAGGGGCAAGGAAGTCTGCAGACCCCA
AGAGACATTGTGATCATCCAGCTTGGGCTCACAAGAAAACCCACGTGCGGCGAGAAAGAGCCAGGGAAAG
GAAGCAGCTTTAGGAAGGGCTTCAGGCTGGACACGGATGACGGGACGTTCCAGAGCTGCTCCAGAAA
GGACAGACGCCAAGCCACGGCTTTCCCGTGTGTCAGGTGCTCACGCAGCGTTGTGGGCGGGCCGGGCC
GCAGAGAGCGCCGGAAGCAGCGCAGTAGAGCTGTCGTTTATCTGCGGCACGTGCGGGAAGGCGCTCA
GCTGCCACAGCCGGCTGCTCGCTCACCAGACGGTGCACACGGGAACCAAGGCCTTCGAGTGCCCCGAGT
GCGGCCAGACCTTCCGGTGGGCTTCAAACCTGCAGCGCCACCAGAAGAACCACACGCGGAGAAGCCCT
TCTGCTGCGAGGCTGCGGGCAGGCGTTCAGCCTGAAGGACCGCCTGGCTCAGCACCGCAAGGTCCACA
CCGAGCACAGGCCCTACTCGTGTGGGACTGTGGGAAAGCCTTCAAGCAGAAGTCCAACCTTCTCAGAC
ACCAGTGGTGCACACCGGGGAGCGCCGTTCTACTGCGGACTGCGGCAAAGCCTTCCGGACCAAGG
AGAACCTCAGCCACCACCAGAGGTTCCACAGCGGGGAGAAGCCCTACACCTGTGCCGAGTGCGGCAAGT
CCTTCCGGTGGCCAAGGGCTTACAGATCCACCGGAGGCTGCACCTGACGAAGAGTTCTACGAGTGCG
GCCACTGTGGAAAGGCTTCCGTACCTGGGGTCTTTCACGCGGCATCAGAGGACTCACAGGCACGGG
AGGTG
ACGCGTACGCGGCCGCTCGAG - GFP Tag - GTTTAAAC
```



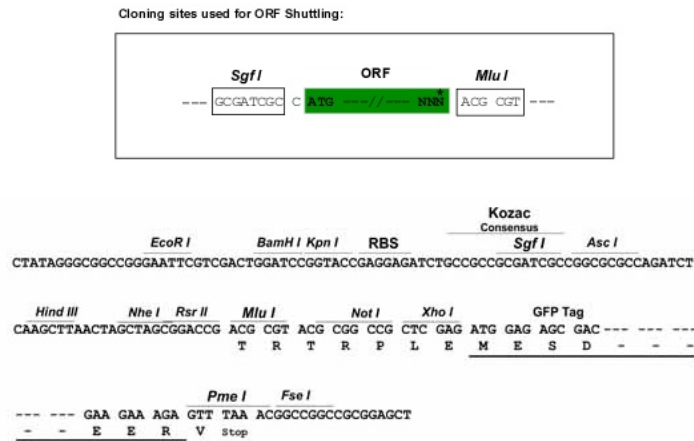
[View online »](#)

**Protein Sequence:** >Peptide sequence encoded by RG237789  
 Blue=ORF Red=Cloning site Green=Tag(s)

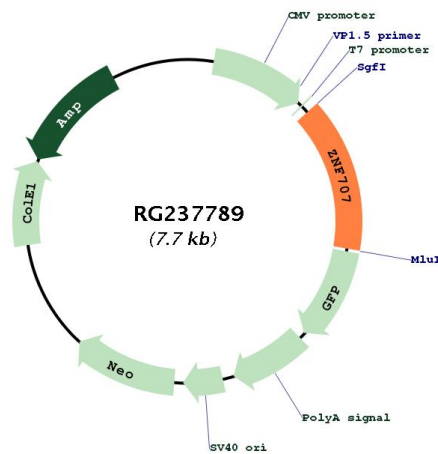
XWPRSQ\*PSGTWPSTSQGRSGRVWNPARGPSTGT\*CWTTSAVWLLWDFAAPDQTSSLAWNSGRSRGLKTGR  
 DLSSRQCRGDPGQGQSLQTPRDIVIIQLGLTRKPTCGEKEPGKEAALGRASGWTRMTGSFPELLQKGQ  
 TPSRRLSRVRCRSRVGGGAAESAGSSAQ\*SCRSSAARAGRRSAATAGCSLTRCTREPRPSSAPSAAR  
 PSGLLQTCATRRTRARSPSAARPAGRRSA\*RTAWLSTARSTPSTGPTRVATVGKPSRSPTFSDTSWC  
 TPGSGRSTARTAAKPSGPRRTSATTRGSTAGRSPTVPVSAASPSGGPRASASTGGCT\*RRGSTSAAATVGK  
 ASVTWGSRRGIRGLTGTGR  
**TR**TRPLEMESDESGLPAMEIECRITGTLNGVEFELVGGEGTPEQGRMTNKMKSTKGALTFSPYLLSHV  
 MGYGFYHFGTYPSTYENPFLHAINNGGYTNTRIEKYEDGGVLHVSFSYRYEAGRVIGDFKVMGTGFPEP  
 SVIFTDKIIRSNTAVEHLHPMGDNDLDGSFTRTFSLRDGGYSSVVDSHMHFKSAIHPSILQNGGPMFA  
 FRRVEEDHSNTELGIVEYQHAFKTPDADAGEERV

**Restriction Sites:** SgfI-MluI

**Cloning Scheme:**



**Plasmid Map:**



<b>ACCN:</b>	NM_001288806
<b>ORF Size:</b>	657 bp
<b>OTI Disclaimer:</b>	The molecular sequence of this clone aligns with the gene accession number as a point of reference only. However, individual transcript sequences of the same gene can differ through naturally occurring variations (e.g. polymorphisms), each with its own valid existence. This clone is substantially in agreement with the reference, but a complete review of all prevailing variants is recommended prior to use. <a href="#">More info</a>
<b>OTI Annotation:</b>	This clone was engineered to express the complete ORF with an expression tag. Expression varies depending on the nature of the gene.
<b>Components:</b>	The ORF clone is ion-exchange column purified and shipped in a 2D barcoded Matrix tube containing 10ug of transfection-ready, dried plasmid DNA (reconstitute with 100 ul of water).
<b>RefSeq:</b>	<a href="#">NM_001288806.1</a> , <a href="#">NP_001275735.1</a>
<b>RefSeq Size:</b>	2228 bp
<b>RefSeq ORF:</b>	1116 bp
<b>Locus ID:</b>	286075
<b>UniProt ID:</b>	<a href="#">Q96C28</a>
<b>Cytogenetics:</b>	8q24.3
<b>Protein Families:</b>	Transcription Factors
<b>MW:</b>	38.1 kDa
<b>Gene Summary:</b>	May be involved in transcriptional regulation.[UniProtKB/Swiss-Prot Function]