

Product datasheet for **RG237717**

Archaemetzincin 2 (AMZ2) (NM_001289056) Human Tagged ORF Clone

Product data:

Product Type:	Expression Plasmids
Product Name:	Archaemetzincin 2 (AMZ2) (NM_001289056) Human Tagged ORF Clone
Tag:	TurboGFP
Symbol:	Archaemetzincin 2
Mammalian Cell Selection:	Neomycin
Vector:	pCMV6-AC-GFP (PS100010)
E. coli Selection:	Ampicillin (100 ug/mL)
ORF Nucleotide Sequence:	>RG237717 representing NM_001289056. Blue=ORF Red=Cloning site Green=Tag(s)

```
GCTCGTTTAGTGAACCGTCAGAATTTGTAAATACGACTCACTATAGGGCGGCCGGGAATTCGTCGACTG
GATCCGGTACCGAGGAGATCTGCCGCCGCGATCGCC
ATGCAAATAATACGGCACTCCGAACAGACACTAAAAACAGCTCTCATCTCAAAGAACCCAGTGCTTGTA
TCACAGTATGAGAAATTAGATGCTGGGGAACAACGTTTAAATGAATGAAGCCTTCCAGCCAGCCAGTGAT
CTCTTTGGACCCATTACCTTGCATTCTCCATCAGATTGGATCACCTCCCACCCTGAGGCTCCCAAGAC
TTTGAACAGTTCTTCAGTGATCCTTACAGAAAGACACCCTCTCCAACAAACGCAGCATTATATACAG
TCCATTGGCTCTCTAGGAAACACCAGAATTATCAGTGAAGAATATATTAATGGCTCACGGGCTACTGT
AAAGCATATTTCTATGGCTTGGAGTAAACTCCTAGAACCAGTTCCTGTTTCTGTAACAAGATGTTCC
TTTAGAGTCAATGAGAACACACACAACCTACAAATTCATGCAGGGGACATCCTGAAGTCTTGAAAAAG
AAGAAACCTGAAGATGCCTTCTGTGTTGTGGAATAACAATGATTGATCTTTACCAAGAGACTCGTGG
AATTTTGTCTTTGGACAGGCCTCTTTGACAGATGGTGTGGGGATATTCAGCTTTGCCAGGTATGGCAGT
GATTTTATAGCATGCACTATAAAGGCAAAGTGAAGAAGCTCAAGAAAACATCTTCAAGTACTATTCA
ATTTTCGACAACATTTATTTCCAGAAATAACTAGTGTCTTACTACTTGCATCCTGTAAGACTTTAACC
CATGAGATCGGACACATATTTGGACTGCGACACTGCCAGTGGCTGCATGCCTCATGCAAGGCTCCAAC
CACTTGAAGAAGCTGACCGGCCCTCTAAACCTTTGCCCTATCTGTTGCACAAGTTGCAGTGTGCT
GTTGGCTTCAGCATTGTAGAAAGATACAAGCACTGGTGGGTTGATTGATGATGAATCTTCTGACACA
CCTGGAGCAACTCCAGAACACAGTCACGAGGATAATGGGAATTTACCGAAACCCGTGGAAGCCTTTAAG
GAATGAAAGAGTGGATAATAAAATGCCTGGCAGTTCTCCAAAAA
ACGCGTACGCGGCCGCTCGAG - GFP Tag - GTTTAAAC
```



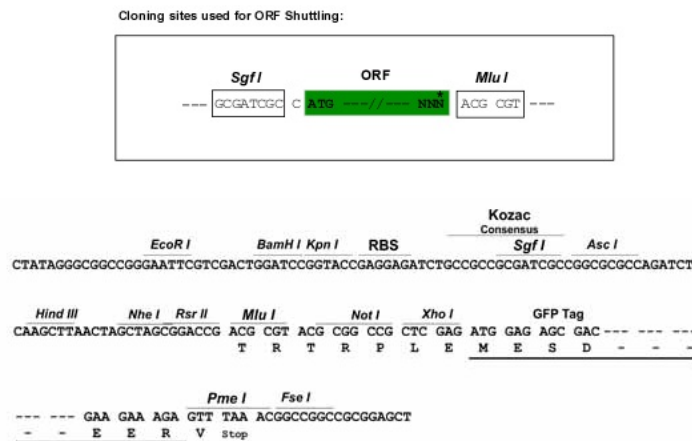
[View online »](#)

Protein Sequence: >Peptide sequence encoded by RG237717
 Blue=ORF Red=Cloning site Green=Tag(s)

MQIIRHSEQLTKTALISKNPVLVSQYEKLDAGEQRLMNEAFQPASDLFGPITLHSPSDWITSHPEAPQD
 FEQFFSDPYRKTSPNKRSIYIQSIGSLGNTRIISEEYIKWLTGYCKAYFYGLRVKLEPVVSVTRCS
 FRVNENTHNLQIHAGDILKFLKKKKPEDAFCVVGITMIDLYPRDSWNVFGQASLTDGVGIFSFARYGS
 DFYSMHYKGVKKLTKTSSSDYSIFDNYIPEITSVLLLRSCKTLTHEIGHIFGLRHCQWLACLMOGNSN
 HLEEADRRPLNLCPICLHKLQCAVGF SIVERYKALVRWIDDESSDTPGATPEHSHEDGNLKPVEAFK
 EWKEWIKCLAVLQK
 TRTRPLEMESDESGLPAMEIECRITGTLNGVEFELVGGEGTPEQGRMTNKMSTKGALTFSPYLLSHV
 MGYGFYHFGTYPYSGYENPFLHAINNGGYNTRIEKYEDGGVLHVFSYRYEAGRVIGDFKVMGTGFPED
 SVIFTDKIIRSNATVEHLHPMGDNDLDGSFTRTFSLRDGGYSSVVDSHMHFKSAIHPSILQNGGPMFA
 FRRVEEDHSNTELGIVEYQHAFKTPDADAGEERV

Restriction Sites: SgfI-MluI

Cloning Scheme:



ACCN: NM_001289056

ORF Size: 1080 bp

OTI Disclaimer: The molecular sequence of this clone aligns with the gene accession number as a point of reference only. However, individual transcript sequences of the same gene can differ through naturally occurring variations (e.g. polymorphisms), each with its own valid existence. This clone is substantially in agreement with the reference, but a complete review of all prevailing variants is recommended prior to use. [More info](#)

OTI Annotation: This clone was engineered to express the complete ORF with an expression tag. Expression varies depending on the nature of the gene.

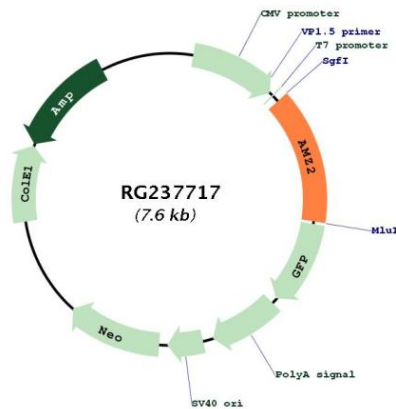
Components: The ORF clone is ion-exchange column purified and shipped in a 2D barcoded Matrix tube containing 10ug of transfection-ready, dried plasmid DNA (reconstitute with 100 ul of water).

RefSeq: [NM_001289056.1](#), [NP_001275985.1](#)

RefSeq Size: 1498 bp

RefSeq ORF:	1083 bp
Locus ID:	51321
UniProt ID:	Q86W34
Cytogenetics:	17q24.2
Protein Families:	Druggable Genome
MW:	41.3 kDa
Gene Summary:	The protein encoded by this gene is a zinc metalloprotease that displays some activity against angiotensin-3. The encoded protein is inhibited by the aminopeptidase inhibitor amastatin, as well as by the general inhibitors o-phenanthroline and batimastat. Defects in this gene may be associated with lung tumorigenesis. [provided by RefSeq, Oct 2016]

Product images:



Circular map for RG237717