

Product datasheet for **RG237708**

C14orf93 (NM_001282969) Human Tagged ORF Clone

Product data:

Product Type:	Expression Plasmids
Product Name:	C14orf93 (NM_001282969) Human Tagged ORF Clone
Tag:	TurboGFP
Symbol:	C14orf93
Synonyms:	RTFC
Mammalian Cell Selection:	Neomycin
Vector:	pCMV6-AC-GFP (PS100010)
E. coli Selection:	Ampicillin (100 ug/mL)
ORF Nucleotide Sequence:	>RG237708 representing NM_001282969. Blue=ORF Red=Cloning site Green=Tag(s)

```
GCTCGTTT TAGTGAACCGTCAGAATTTTGT AATACGACTCACTATAGGGCGGCCGGGAATTCGTCGACTG
GATCCGGTACCGAGGAGATCTGCCGCC GCGATCGCC
ATGCGGCTCCCAGGGTGCACGCTGGCTGCCAGCGAGGCGGCCCCCTGCTCAATCCTCTGGTGGATGAT
TACGTGGCCTCTGAGGGTGCAGTACAGCGAGTTCTGGTCCCTGCTTATGCCAAGCAACTCTACCAGCC
ACACAAC TGGCAATCCAGCGGGCAACCC CAGAGACAGGACCAGAAAAATGGAACCAAGCTGCCACCACCC
CGCCCTGAGGACATGCTCAATGCCGCTGCTGCCGTGGACAGTGCCTTGAAGAGTCAGGCCCTGGGAGC
ACTGGGGAGCTGAGACACTCTTAGGGCTGACCGTTTCCCATGCAGGACCAGAGGAAGTGGGCAGAAG
AACTCCAGGCGCAAGCGGGATCTTGTACTCTCTAAACTGGTCCACAATGTGCATAACCACATCACC AAT
GACAAGAGATTCAATGGGTCTGAAAGCATCAAGTCCCTCTTGAATATTTCAAGTAGTGAAGTTTCTCTG
GAAAAGCTCAAGCAAGAGCTGGTGACCACTCCCAACAATTACACTGATAAGGAGCTAAAAGGAGCCTGT
GTGGCCTACTTCTTACTAAGAGGCGTGAGTACCGCAACTCCCTGAACCCCTTTAAAGGCCTGAAGGAA
AAAGAGGAGAAGAACTTCAAGTTCGCGGATATCGGCTTTTGGCAACCGATCCAGTATCATGAGGCAT
TTTGGACCTGAGGACCAACGCTCTGTGGAATGATGTGACAGAGGAACTGATGTCAGATGAAGAGGACAGT
CTTAACGAGCCAGGTGTGTGGGTGGCCCGCCCTCCCGTTTCCGGGCCAGCGCCTCACAGAGCTCTGC
TACCACCTGGATGCTAACTCTAAGCATGGCACC AAAGCCAACCGTGTGTATGGGCTCCCTCAGACAGA
CTGCC TTTCTGCTGAAGCCAGCTCCTTCCACCAGAACTTTACAATCCTAATTTCCAAGAAGAGGAAGAT
GAGGGAGGGGATGAGAATGCACCTGGCTCCCATCTTTTGACCAACCCCAAAAACCTGCTGTCTGAC
TTGAAC TCAATTCATTGAAATCAAGGTGGAAAAGGATGAA
ACGCGTACGCGGCCGCTCGAG - GFP Tag - GTTTAAAC
```



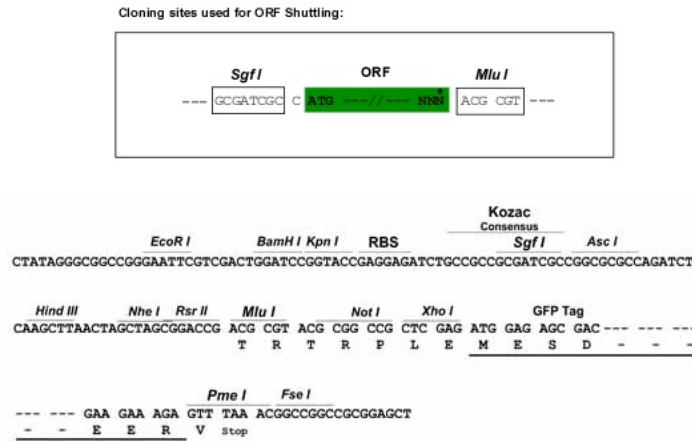
[View online »](#)

Protein Sequence: >Peptide sequence encoded by RG237708
 Blue=ORF Red=Cloning site Green=Tag(s)

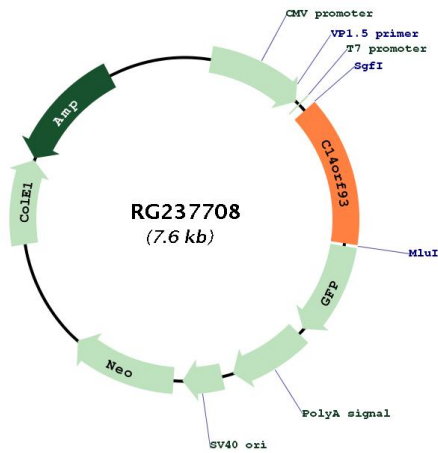
MRLPGCTLAASEAAPLLNPLVDDYVASEGAVQRVLPAYAKQLSPATQLAIQRATPETGPENGTKLPPP
 RPEDMLNAAAALDSALEESGPGSTGELRHSLGLTVSPCRTRGSGQKNSRRKRDLVLSKLVHNVHNHITN
 DKRFNGSESIKSSWNI SVVKFLLEKLKQELVTSPhNYTDKELKGACVAYFLTKRREYRNSLNPFKGLKE
 KEEKLRSRRYRLFANRSSIMRHFQPEDQRLWVDVTEELMSDEEDSLNEPGVWVARPPRFRAQRLTELC
 YHLDANSKHGTKANRVYGPPSDRLPSAEAQLLPELYNPNFQEEDEGGDENAPGSPSFDQPHKTCPCD
 LNSFIEIKVEKDE
 TRTRPLEMESDESGLPAMEIECRITGTLNGVEFELVGGEGTPEQGRMTNKMSTKGALTFSPYLLSHV
 MGYGFYHFGTYPSTYENPFLHAINNGGYNTRIEKYEDGGVLHVSFSYRYEAGRVIGDFKVMGTGFPED
 SVIFTDKIIRSNTAVEHLHPMGDNDLDGSFTRTFSLRDGGYSSVVDSHMHFKSAIHPSILQNGGPMFA
 FRRVEEDHSNTELGIVEYQHAFKTPDADAGEERV

Restriction Sites: SgfI-MluI

Cloning Scheme:



Plasmid Map:



ACCN:	NM_001282969
ORF Size:	1074 bp
OTI Disclaimer:	The molecular sequence of this clone aligns with the gene accession number as a point of reference only. However, individual transcript sequences of the same gene can differ through naturally occurring variations (e.g. polymorphisms), each with its own valid existence. This clone is substantially in agreement with the reference, but a complete review of all prevailing variants is recommended prior to use. More info
OTI Annotation:	This clone was engineered to express the complete ORF with an expression tag. Expression varies depending on the nature of the gene.
Components:	The ORF clone is ion-exchange column purified and shipped in a 2D barcoded Matrix tube containing 10ug of transfection-ready, dried plasmid DNA (reconstitute with 100 ul of water).
RefSeq:	NM_001282969.1 , NP_001269898.1
RefSeq Size:	1850 bp
RefSeq ORF:	1077 bp
Locus ID:	60686
UniProt ID:	Q9H972
Cytogenetics:	14q11.2
Protein Families:	Secreted Protein
MW:	40.6 kDa