

## Product datasheet for **RG237688**

### ADPRH (NM\_001291949) Human Tagged ORF Clone

#### Product data:

Product Type:	Expression Plasmids
Product Name:	ADPRH (NM_001291949) Human Tagged ORF Clone
Tag:	TurboGFP
Symbol:	ADPRH
Synonyms:	ARH1; hARH1
Mammalian Cell Selection:	Neomycin
Vector:	pCMV6-AC-GFP (PS100010)
E. coli Selection:	Ampicillin (100 ug/mL)
ORF Nucleotide Sequence:	>RG237688 representing NM_001291949. Blue=ORF Red=Cloning site Green=Tag(s)

```
GCTCGTTTGTAGTGAACCGTCAGAATTTTGTAAATACGACTCACTATAGGGCGGCCGGGAATTCGTCGACTG
GATCCGGTACCGAGGAGATCTGCCGCCGCGATCGCC
ATGGAGAAGTATGTGGCTGCTATGGTGCTGAGTGCAGCTGGAGATGCCCTGGGGTACTACAATGGGAAG
TGGGAGTTCCTCCAGGATGGGGAGAAGATACACCGCAGTTGGCCAGCTGGGCGGCTTGGATGCCCTA
GACGTGGGAAGGTGGAGAGTTAGTGACGACACAGTGCAGTGGCCACAGCAGAAGCTCTTGTGGAA
GCTGGGAAAGCCCTAAGTTGACTCAACTGTATTACCTCCTTGTAAAGCATTACCAAGACTGCATGGAA
GACATGGATGGGCGGCCACAGGTGGTGCCTCGGTGCACAACGCCATGCAGCTGAAGCCGGGCAAGCCC
AATGGCTGGAGGATTCCTTCAACAGCCATGAGGGCGGCTGTGGGCTGCCATGCGGGCCATGTGCATC
GGTCTCAGGTTCCACACCATAGCCAATGGACACACTGATCCAAGTGAAGTGCAGAGTGGTCCGATG
ACCCACCACCAACAGGCTACCTGGGGCCCTTGCCTGCTCTTTTTACAGCCTATGCAGTGAAT
AGCAGACCACCTTGCAGTGGGAAAAGGACTGATGGAGCTGCTACCAGAAGCTAAAAAGTACATTGTC
CAATCAGGCTACTTTGTAGAGGAAAATCTTCAACACTGGTCTACTTCCAACCAAAATGGGAAAATTAC
CTAAAAGTATAGAGGATTTTGGATGGAGAATCAGCCCCTACCTTCCCTGAGTCTTTCGGTGTGAAGGAG
AGGGATCAGTTCTACACCTCCCTGAGCTACTCTGGCTGGGGTGGCAGCAGTGGGCACGATGCCCCATG
ATTGCCTACGATGCTGTTCTTGTGCAGGAGACTCCTGGAAGGAGCTTGGCCACCGAGCCTTTTCCAT
GGTGGAGACAGTATTCTACAGTGCATTGCTGGCTGCTGGTGGGAGTTATGTATGGTTTTAAAGGA
GTGAGTCCCTCCAACATGAGAACTAGAATACAGAAACCGGCTGGAAGAGACAGCTAGGGCTTTATAT
TCTCTCGGGTCAAAGAAGACTGTAATTTCCCTT
ACGCGTACGCGGCCGCTCGAG - GFP Tag - GTTTAAAC
```



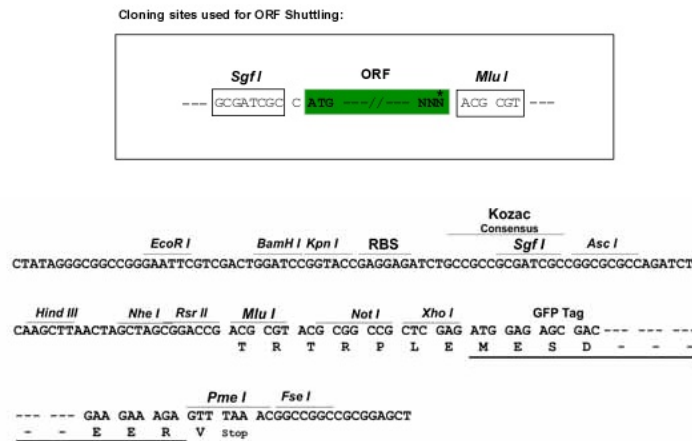
[View online »](#)

**Protein Sequence:** >Peptide sequence encoded by RG237688  
 Blue=ORF Red=Cloning site Green=Tag(s)

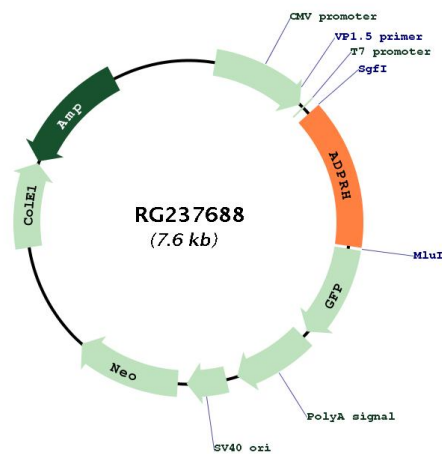
MEKYVAAMVLSAAGDALGYINGKWEFLQDGEKIHRQLAQLGGLDALDVGRWRVSDDTVMHLATAEALVE  
 AGKAPKLTQLYLLAKHYQDCMEDMDGRAPGGASVHNAMQLKPGKPNGWRIPFNSHEGGCGAAMRAMCI  
 GLRFPHHSQLDTLIQVSIESGRMTHHPTGYLGALASALFTAYAVNSRPPLQWGKLMELLPEAKKYIV  
 QSGYFVEENLQHWSYFQTKWENYLKLRGILDGESAPTFPESFGVKERDQFYTSLSYSGWGGSSGHDAMP  
 IAYDAVLAAGDSWKELAHRAFFHGGSDSTAAIAGCWGVMYGFKGVSPSNYEKLEYRNRLEETARALY  
 SLGSKEDTVISL  
 TRTRPLEMESDESGLPAMEIECRITGTLNGVEFELVGGEGTPEQGRMTNKMSTKGALTFSPYLLSHV  
 MGYGFYHFGTYPSTYENPFLHAINNGGYNTRIEKYEDGGVLHVSFSYRYEAGRVIGDFKVMGTGFPED  
 SVIFTDKIIRSNTAVEHLHPMGDNDLDGSFTRTFSLRDGGYSSVVDSHMHFKSAIHPSILQNGGPMFA  
 FRRVEEDHSNTELGIVEYQHAFKTPDADAGEERV

**Restriction Sites:** SgfI-MluI

**Cloning Scheme:**



**Plasmid Map:**



<b>ACCN:</b>	NM_001291949
<b>ORF Size:</b>	1071 bp
<b>OTI Disclaimer:</b>	The molecular sequence of this clone aligns with the gene accession number as a point of reference only. However, individual transcript sequences of the same gene can differ through naturally occurring variations (e.g. polymorphisms), each with its own valid existence. This clone is substantially in agreement with the reference, but a complete review of all prevailing variants is recommended prior to use. <a href="#">More info</a>
<b>OTI Annotation:</b>	This clone was engineered to express the complete ORF with an expression tag. Expression varies depending on the nature of the gene.
<b>Components:</b>	The ORF clone is ion-exchange column purified and shipped in a 2D barcoded Matrix tube containing 10ug of transfection-ready, dried plasmid DNA (reconstitute with 100 ul of water).
<b>RefSeq:</b>	<a href="#">NM_001291949.1</a> , <a href="#">NP_001278878.1</a>
<b>RefSeq Size:</b>	3618 bp
<b>RefSeq ORF:</b>	1074 bp
<b>Locus ID:</b>	141
<b>UniProt ID:</b>	<a href="#">P54922</a>
<b>Cytogenetics:</b>	3q13.33
<b>MW:</b>	39.5 kDa
<b>Gene Summary:</b>	The enzyme encoded by this gene catalyzes removal of mono-ADP-ribose from arginine residues of proteins in the ADP-ribosylation cycle. Unlike the rat and mouse enzymes that require DTT for maximal activity, the human enzyme is DTT-independent. Alternatively spliced transcript variants that encode different protein isoforms have been described. [provided by RefSeq, May 2014]