

Product datasheet for **RG237667**

TBC1D14 (NM_001286805) Human Tagged ORF Clone

Product data:

Product Type:	Expression Plasmids
Product Name:	TBC1D14 (NM_001286805) Human Tagged ORF Clone
Tag:	TurboGFP
Symbol:	TBC1D14
Mammalian Cell Selection:	Neomycin
Vector:	pCMV6-AC-GFP (PS100010)
E. coli Selection:	Ampicillin (100 ug/mL)
ORF Nucleotide Sequence:	>RG237667 representing NM_001286805. Blue=ORF Red=Cloning site Green=Tag(s)

```
GCTCGTTTAGTGAACCGTCAGAATTTTGTAAACGACTCACTATAGGGCGGCCGGGAATTCGTCGACTG
GATCCGGTACCGAGGAGATCTGCCGCCGCGATCGCC
ATGGTGGTTCAGGCCAAAAGCGAGAGCTGAAAGAAGCCAGCGAAGGAAGAAGCAGCTGGAAGAAAGA
TGCAGAGTCGAGGAAAGCATTGGAACGCTGTGCTCACCTGGAATAATGAGATCTTACCTAACTGGGAA
ACAATGTGGTGTCTAGAAAAGTTCGAGATTTATGGTGGCAGGGAATCCCTCAAGTGTGAGAGGCCAAA
GTCTGGAGCTTAGCCATTGGCAACGAGTTAAATATCACCCACGAGCTCTTTGACATCTGTCTTGCCCGA
GCCAAGGAGAGGTGGCGGTCCCTTAGCACAGGAGGCTCTGAAGTGGAGAACGAAGATGCTGGTTTTTCA
GCAGCAGACAGAGAAGCCAGTCTGGAGCTTATTAACCTGGACATTCTAGAACATTTCTAACTCTGTC
ATTTTCCAGCAAGGTGGTCCATATCATGACATGTTGCACAGTATTTGGGCGCTTATACTTGTACCGG
CCAGATGTGGTTATGTCCAGGGCATGTCCTTCATAGCAGCAGTGTGATCTTGAACCTAGATACTGCA
GATGCCTTTATTGCCTTTTCTAACCTTCTGAATAAACCCGTCAAATGGCGTTTTTTAGAGTGGACCAT
GGCCTTATGTTGACTTATTTGCTGCATTTGAAGTATTCTTTGAAGAAAATTTGCCGAAATTTATTGCG
CATTTCAAGAAGAACAACCTAACTCCAGATATCTACCTAATTGATTGGATCTTTACCTTATATAGTAAA
TCTCTGCCCTCGACCTGGCCTGTCGTATCTGGGACGTGTTCTGTGCGGATGGGGAAGAGTTCCTGTTC
CGCACGGCCCTGGGCATCTGAAGCTGTTGAGGACATCTGACCAAGATGGACTTCATTACATGGCC
CAGTTCCTGACCCGGCTGCCGAGGACCTGCCCGGAGGAGCTGTTTGCCTCCATGCCACGATCCAG
ATGCAGAGCCGAAACAAGAAGTGGGCTCAGGACTGACTGCATTGCAGAAAGACGCCGGGAATGGAG
AAGGGAAGTCCGTCCCTCCGACAC
ACGCGTACGCGGCCGCTCGAG - GFP Tag - GTTTAAAC
```



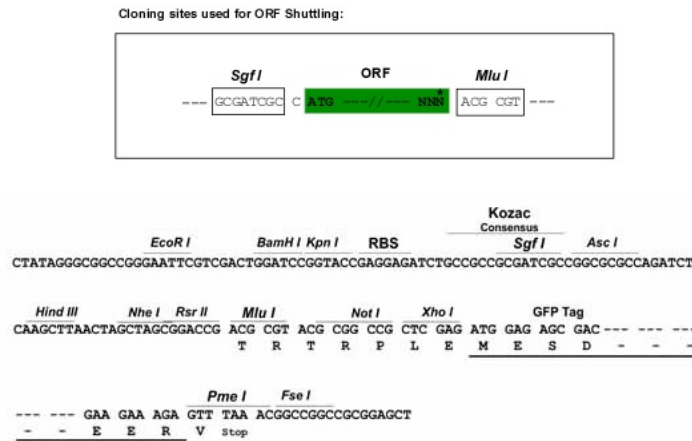
[View online »](#)

Protein Sequence: >Peptide sequence encoded by RG237667
 Blue=ORF Red=Cloning site Green=Tag(s)

MVVQAKKRELKEAQRKKQLLEERCVEESIGNAVLTWNNEILPNWETMWC SRKVRDLWWQGI PPSVRGK
 VWSLAIGNELNITHELFDICLARA KERWRSLSTGGSEVENEDAGFSAADREASLELIKLDISRTFPNLC
 IFQQGGPYHDLHSILGAYTCYRPDVGYVQGM SFAAVLILNLDTADAFIAFSNLLNKPCQMAFFRVDH
 GLMLTYFAAEVFF EENLPKLF AHFKNNLTPDIYLIDWIFTLYSKSLPLDLACRIWDVFCRDGEEFLF
 RTALGILKLFEDILTKMDFIHMAQFLTRLPEDLP AEELFASIATIQMQSRNKKWAQVLTALQKDSREME
 KGSPSLRH
 TRTRPLEMESDESGLPAMEIECRITGTLNGVEFELVGGEGTPEQGRMTNKMKSTKGALTFSPYLLSHV
 MGYGFYHFGTYP SGYENPFLHAINNGGYNTRIEKYEDGGVLHVSFSYRYEAGRVIGDFKVMGTGFPED
 SVIFTDKIIRS NATVEHLHPMGDNDLDGSFTRTFSLRDGGYSSVVD SHMHFKSAIHPSILQNGGPMFA
 FRRVEEDHSNTELGIVEYQHAFKTPDADAGEERV

Restriction Sites: SgfI-MluI

Cloning Scheme:



ACCN: NM_001286805

ORF Size: 1059 bp

OTI Disclaimer: The molecular sequence of this clone aligns with the gene accession number as a point of reference only. However, individual transcript sequences of the same gene can differ through naturally occurring variations (e.g. polymorphisms), each with its own valid existence. This clone is substantially in agreement with the reference, but a complete review of all prevailing variants is recommended prior to use. [More info](#)

OTI Annotation: This clone was engineered to express the complete ORF with an expression tag. Expression varies depending on the nature of the gene.

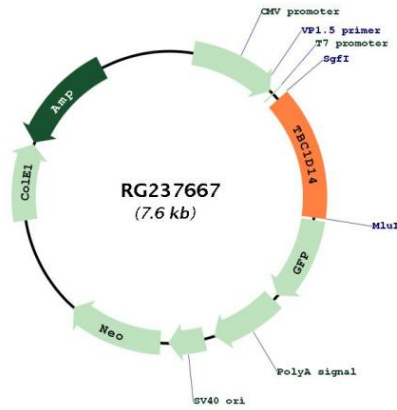
Components: The ORF clone is ion-exchange column purified and shipped in a 2D barcoded Matrix tube containing 10ug of transfection-ready, dried plasmid DNA (reconstitute with 100 ul of water).

RefSeq: [NM_001286805.1](#), [NP_001273734.1](#)

RefSeq Size: 4026 bp

RefSeq ORF: 1062 bp
 Locus ID: 57533
 UniProt ID: [Q9P2M4](#)
 Cytogenetics: 4p16.1
 MW: 41.3 kDa
 Gene Summary: Negative regulator of starvation-induced autophagosome formation.[UniProtKB/Swiss-Prot Function]

Product images:



Circular map for RG237667