

Product datasheet for **RG237666**

FDFT1 (NM_001287749) Human Tagged ORF Clone

Product data:

Product Type:	Expression Plasmids
Product Name:	FDFT1 (NM_001287749) Human Tagged ORF Clone
Tag:	TurboGFP
Symbol:	FDFT1
Synonyms:	DGPT; ERG9; SQS; SQSD; SS
Mammalian Cell Selection:	Neomycin
Vector:	pCMV6-AC-GFP (PS100010)
E. coli Selection:	Ampicillin (100 ug/mL)
ORF Nucleotide Sequence:	>RG237666 representing NM_001287749. Blue=ORF Red=Cloning site Green=Tag(s)

```
GCTCGTTTGTAGTGAACCGTCAGAATTTTGTAAACGACTCACTATAGGGCGGCCGGGAATTCGTCGACTG
GATCCGGTACCGAGGAGATCTGCCGCCGCGATCGCC
ATGCGCAACGCGAGTGTGCATATTTTATCTGTTTCTCCGAGCTCTGGACACTGGAAGATGACATGACC
ATCAGTGTGAAAAGAAGGTCCCGCTGTTACACAACCTTCACTCTTTCCTTACCAACCAGACTGGCGG
TTCATGGAGAGCAAGGAGAAGGATCGCCAGGTGCTGGAGGACTTCCCAACGATCTCCCTTGAGTTTAGA
AATCTGGCTGAGAAATACCAACAGTGATTGCCGACATTTGCCGAGAATGGGCATTGGGATGCCAGAG
TTTTTGGATAAGCATGTGACCTCTGAACAGGAGTGGGACAAGTACTGCCACTATGTTGCTGGGCTGGTC
GGAATGGCCTTCCCGTCTTTTCTCAGCCTCAGAGTTTGAAGACCCCTTAGTTGGTGAAGATACAGAA
CGTGCCAACTCTATGGGCTGTTTCTGCAGAAAACAAACATCATCCGTGACTATCTGGAAGACCAGCAA
GGAGGAAGAGAGTTCTGGCCTCAAGAGGTTTGGAGCAGGTATGTTAAGAAGTTAGGGGATTTTGCTAAG
CCGGAGAATATTGACTTGGCCGTGCAGTGCCTGAATGAACCTTATAACCAATGCACTGCACCACATCCCA
GATGTCATCACCTACCTTTCGAGACTCAGAAAACAGAGTGTGTTAACTTCTGTGCTATTTCCACAGGTG
ATGGCCATTGCCACTTTGGCTGCCTGTTATAATAACCAGCAGGTGTTCAAAGGGGCGAGTGAAGATTCCG
AAAGGGCAAGCAGTGACCCTGATGATGGATGCCACCAATATGCCAGCTGTCAAAGCCATCATATATCAG
TATATGGAAGAGATTTATCATAGAATCCCCGACTCAGACCCATCTTCTAGCAAAAACAAGGCAGATCATC
TCCACCATCCGGACGCAGAATCTTCCCACTGTGAGCTGATTTCCGAAGCCACTACTCCCCATCTAC
CTGTCGTTTGTGATGCTTTTGGCTGCCCTGAGCTGGCAGTACCTGACCACTCTCTCCAGGTAACAGAA
GACTATGTTTCAGACTGGAGAACAC
ACGCGTACGCGGCCGCTCGAG - GFP Tag - GTTTAAAC
```



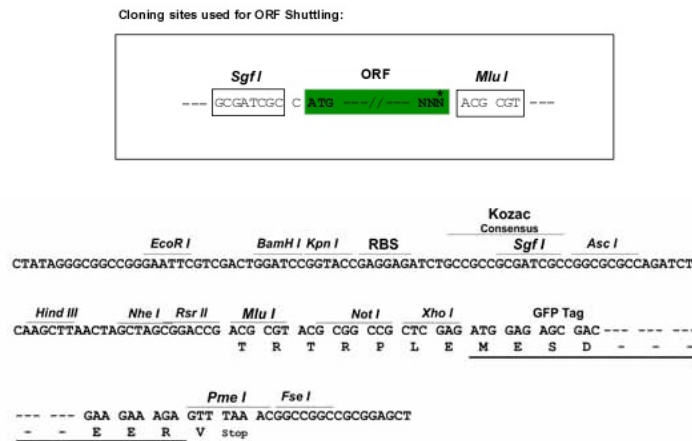
[View online »](#)

Protein Sequence: >Peptide sequence encoded by RG237666
 Blue=ORF Red=Cloning site Green=Tag(s)

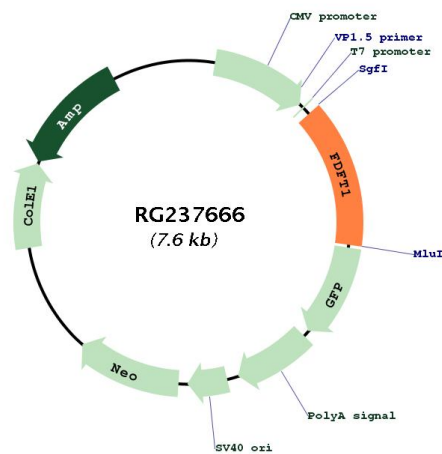
MRNAVCIFYLVLRALDTLEDDMTISVEKKVPLLNHFSFLYQPDWRFMESKEKDRQVLEDFPTISLEFR
 NLAEKYQTVIADICRRMGIGMAEFLDKHVTSEQEWKDYCHYVAGLVGIGLSRLFSASEFEDPLVGEDTE
 RANSMGLFLQKTNIIRDYLEDDQGGREFWPQEVWSRYVKKLGDFAKPENIDLAVQCLNELITNALHHIP
 DVITYLSRLRNQSVFNCAIPQVMAIATLAACYNNQVFKGAVKIRKGQAVTLMMDATNMPAVKAIYQ
 YMEEIYHRIPDSDPSSSKTRQIIISTIRTQNLPCQLISRSHYSPIYLSFVMLLAALSWQYLTTLSQVTE
 DYVQTGEH
 TRTRPLEMESDESGLPAMEIECRITGTLNGVEFELVGGEGTPEQGRMTNKMSTKGALTFSPYLLSHV
 MGYGFYHFGTYPSTYENPFLHAINNGGYNTRIEKYEDGGVLHVSFSYRYEAGRVIGDFKVMGTGFPED
 SVIFTDKIIRSNATVEHLHPMGDNDLDGSFTRTFSLRDGGYSSVVDSHMHFKSAIHPSILQNGGPMFA
 FRRVEEDHSNTELGIVEYQHAFKTPDADAGEERV

Restriction Sites: SgfI-MluI

Cloning Scheme:



Plasmid Map:



ACCN:	NM_001287749
ORF Size:	1059 bp
OTI Disclaimer:	The molecular sequence of this clone aligns with the gene accession number as a point of reference only. However, individual transcript sequences of the same gene can differ through naturally occurring variations (e.g. polymorphisms), each with its own valid existence. This clone is substantially in agreement with the reference, but a complete review of all prevailing variants is recommended prior to use. More info
OTI Annotation:	This clone was engineered to express the complete ORF with an expression tag. Expression varies depending on the nature of the gene.
Components:	The ORF clone is ion-exchange column purified and shipped in a 2D barcoded Matrix tube containing 10ug of transfection-ready, dried plasmid DNA (reconstitute with 100 ul of water).
RefSeq:	NM_001287749.1 , NP_001274678.1
RefSeq Size:	2246 bp
RefSeq ORF:	1062 bp
Locus ID:	2222
UniProt ID:	P37268
Cytogenetics:	8p23.1
Protein Families:	Druggable Genome
Protein Pathways:	Metabolic pathways, Steroid biosynthesis
MW:	41.2 kDa
Gene Summary:	This gene encodes a membrane-associated enzyme located at a branch point in the mevalonate pathway. The encoded protein is the first specific enzyme in cholesterol biosynthesis, catalyzing the dimerization of two molecules of farnesyl diphosphate in a two-step reaction to form squalene. [provided by RefSeq, Jul 2008]