

Product datasheet for **RG237630**

CCDC138 (NM_001303106) Human Tagged ORF Clone

Product data:

Product Type:	Expression Plasmids
Product Name:	CCDC138 (NM_001303106) Human Tagged ORF Clone
Tag:	TurboGFP
Symbol:	CCDC138
Mammalian Cell Selection:	Neomycin
Vector:	pCMV6-AC-GFP (PS100010)
E. coli Selection:	Ampicillin (100 ug/mL)
ORF Nucleotide Sequence:	>RG237630 representing NM_001303106. Blue=ORF Red=Cloning site Green=Tag(s)

```
GCTCGTTTAGTGAACCGTCAGAATTTTGTAAATACGACTCACTATAGGGCGGCCGGGAATTCGTCGACTG
GATCCGGTACCGAGGAGATCTGCCGCCGCGATCGCC
ATGACAATACAGAGATTGAAAGGAAGTCCCATGCTGTTTCATGAAATGAAAAGTTTAAAACAAGAAAA
GCACCAGTTTCAAAAACCTACAAGGTACCACCTTAATGGGCAAGTTTATGAACTTTTAACTGTCTTCATG
GACTGGATTTTCGGATCATCATCTTAGCAAAGTAAACATGAAGAATCTGGAATGGATGGTAAAAACCA
CAACTCAAATTTGCTTCCCAGAGAAATGATATTCAGGAGAAGTGTGTAAGCTTTTGCCTCTAATGACA
GAGCAGCTACAGTGGATGCCATTTGTGAATATCAAACCTCACGAGCCTTTTGTAAATTTATATATTGG
TCCCTAAGGCAGCTAGATGCTGGAGCACAGCACTCGACTATGACATCAACATTGAGGAGATTGGGTGAA
GACATTTTTAAAGGAGTGGTAACTAAAGGAATTCAGGATAATTCTCCACAGCATTCTGTGGAGAATAAA
CCAAAGACAGCTGCTTTCTTTAAGAGCTCCAATTTGCCATTGAGATTTTTATCAACCTTAATTGTTCTC
AAAACAGTCACTCAAGCTGATTACCTGGCTCAGGCATTTGATTCTCTTTGTTGGACTTGAAGACAGAA
GAAGGAAAAACCTTGTTTTGGAGTATCAGGCTGTTCCAGTAATATTAAGTCATCTAAGAATATCCAGT
AAAGGACTCCTGTCTAATGTTATTGATAGTTTGTCCAGATGACGGTGAATCTAAATCCTTGCAGCCT
TTCCTGGAAGCCTGTAGCAACTCTTATTTTTTCGTAATGCTCTGTGCTGCTTCGAGCCCTAAGCTT
GATCTTCAAATACTAGAAAACTCAGTATTATTTACAGAACTTCCAAAATCAAGAGTAATAAGAAG
CTCTTTGAACTTTTACGATTCACTGATGCTTCAAGAAATACAAGGACAACAAACCCAGAGCATGCA
TTTCTCTGATTAATCTAAATCAACTCTGTTCAATCTGGGTTTAAACAAATGTAACCTCCCTGGTCTCC
AGTGCAAGCCCT
ACGCGTACGCGGCCGCTCGAG - GFP Tag - GTTTAAAC
```



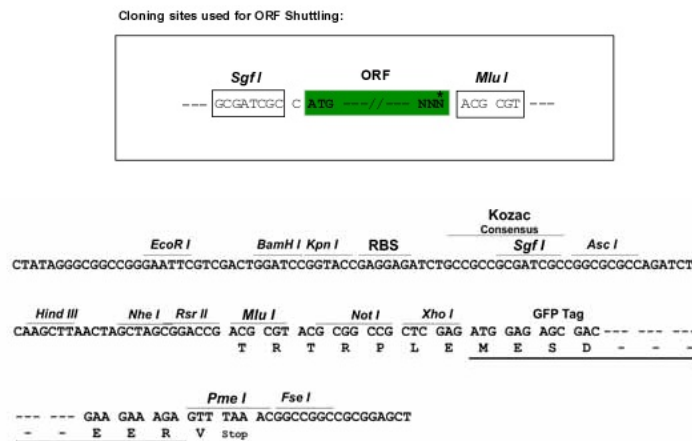
[View online »](#)

Protein Sequence: >Peptide sequence encoded by RG237630
 Blue=ORF Red=Cloning site Green=Tag(s)

MTIQRLKGS SHAVHEM KSLKQEKAPVSKTYKVPLNGQVYELLTVFMDWISDHHL SKVKHEESGMDGKKP
 QLK FASQRNDIQEKCVKLLPLMTEQLQWMPFVNIKLHEPFVKFIYWSLRQLDAGA QHSTMTSTLRR LGE
 DIFKGVVTKGIQDN SPQH SVENKPKTAAFFKSSNLPLRFLSTLIVLKT V TQADYLAQAFDSLCLDLKTE
 EGKTLFLEYQAVPVILSHLR ISSKGLLSNVIDSLLQMTVESKSLQPFLEACSNLFFRTCSVLLRPAKL
 DLQILEKLSIILQKLSKIKSNKKLFELFTIHLMLQEIQRTTNPEHAF LCINLNSTL FNLGLTKCNSLVS
 SASP
 TRTRPLEMESDESGLPAMEIECRITGTLNGVEFELVGGGEGTPEQGRMTNKMKSTKGALTFSPYLLSHV
 MGYGFYHFGTYP SGYENPFLHAINNGGYNTRIEKYEDGGVLHVSFSYRYEAGRVIGDFKVMGTGFPED
 SVIFTDKIIRSNATVEHLHPMGDNDLDGSFTRTFSLRDGGYSSVVD SHMHFKSAIHPSILQNGGPMFA
 FRRVEEDHSNTELGIVEYQHAFKTPDADAGEERV

Restriction Sites: SgfI-MluI

Cloning Scheme:



ACCN: NM_001303106

ORF Size: 1047 bp

OTI Disclaimer: The molecular sequence of this clone aligns with the gene accession number as a point of reference only. However, individual transcript sequences of the same gene can differ through naturally occurring variations (e.g. polymorphisms), each with its own valid existence. This clone is substantially in agreement with the reference, but a complete review of all prevailing variants is recommended prior to use. [More info](#)

OTI Annotation: This clone was engineered to express the complete ORF with an expression tag. Expression varies depending on the nature of the gene.

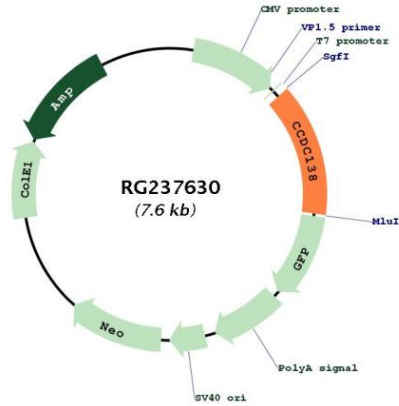
Components: The ORF clone is ion-exchange column purified and shipped in a 2D barcoded Matrix tube containing 10ug of transfection-ready, dried plasmid DNA (reconstitute with 100 ul of water).

RefSeq: [NM_001303106.1](#), [NP_001290035.1](#)

RefSeq Size: 2415 bp

RefSeq ORF: 1050 bp
 Locus ID: 165055
 Cytogenetics: 2q13
 MW: 40.1 kDa

Product images:



Circular map for RG237630