

Product datasheet for **RG237618**

ABLIM2 (NM_001286688) Human Tagged ORF Clone

Product data:

Product Type:	Expression Plasmids
Product Name:	ABLIM2 (NM_001286688) Human Tagged ORF Clone
Tag:	TurboGFP
Symbol:	ABLIM2
Mammalian Cell Selection:	Neomycin
Vector:	pCMV6-AC-GFP (PS100010)
E. coli Selection:	Ampicillin (100 ug/mL)
ORF Nucleotide Sequence:	>RG237618 representing NM_001286688. Blue=ORF Red=Cloning site Green=Tag(s)

```
GCTCGTTTAGTGAACCGTCAGAATTTTGTAAACGACTCACTATAGGGCGGCCGGGAATTCGTCGACTG
GATCCGGTACCGAGGAGATCTGCCGCCGCGATCGCC
ATGTTTGCAGAAGGCGAAGAGATGTATCTTCAAGGTTCCCTCCATCTGGCATCCGGCGTGTGCGACAAGCA
GCCAGAAGTGAAGACAGAAACAAGGAAACCAGAAGTTCCTCAGAGAGCATCATTCTGTCCCTGCTTCC
AGCACCTCAGGGTCTCCGAGCCGTGTGATTTATGCCAAGCTTGGTGGTGGATCCTGGACTACAGGGAC
TTGGCAGCCCTTCTAAAAGTAAGGCCATCTATGACATCGACCGCCCGACATGATCTCCTACTCACCC
TACATCAGCCACTCTGCAGGGGACAGGCAGAGCTACGGCGAGTCCCCTCAGTTGCTCTCGCCAACGCCG
ACCGAGGGGGATCAGGATGACCGGTCCTACAAGCAGTGTGGACCTCCAGCCCAAGCTCCACTGGGTCG
GTTAGCCTCGGGCGCTACACTCCGACCTCACGGTACCACAGCACTACAGCCGTCCAGACACTGGCGTA
AAAGATAACATCTATAGGAAACCCCTATCTACAGACAGCATGCTGCCAGGCGATCGGATGGGGAGGAT
GGAAGCTTGGACCAGGATAACAGGAAGCAGAAGAGCAGCTGGCTGATGCTCAAGGGGGATGCAGACACA
AGGACCAATTCTCCAGACCTGGACACCCAGTCCTTGTCCACAGCAGCGGGACCGACAGAGACCCTCTC
CAAAGGATGGCAGGGGACAGCTTCACTCACGATTCCCCTATTCCAAATCTGACCCTCTCCAGGACAT
GGAAAGAATGGCTTGGACCAGCGGAATGCCAATCTGGCCCCCTGTGGAGCAGACCCGGATGCCAGCTGG
GGCATGCGAGAATAACAAGATCTATCCGTATGACTCCCTCATCGTCAAAACCGAATTCGCGTGAAACTG
CCCAAAGACGTGGACCGGACGAGACTGGAGAGACACTTGTGCCCGAGGAGTTCCAGGAAGTGTGGGG
ATGAGCATCGAGGAGTTTGACCGCTGGCCCTCTGGAAGAGGAATGACCTTAAGAAGAAAGCCCTTTGG
TTC
ACGCGTACGCGGCCGCTCGAG - GFP Tag - GTTTAAAC
```



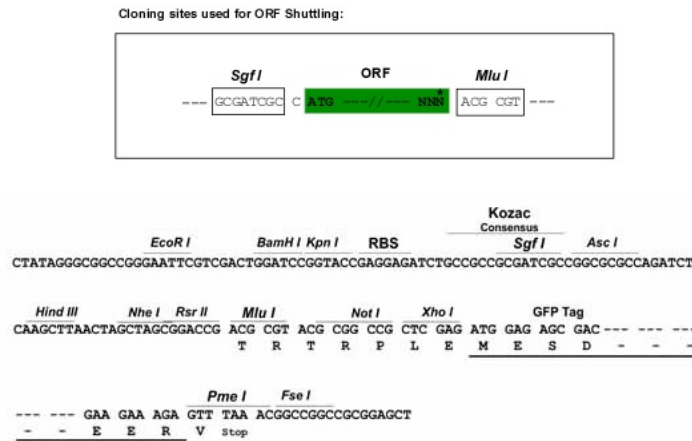
[View online »](#)

Protein Sequence: >Peptide sequence encoded by RG237618
 Blue=ORF Red=Cloning site Green=Tag(s)

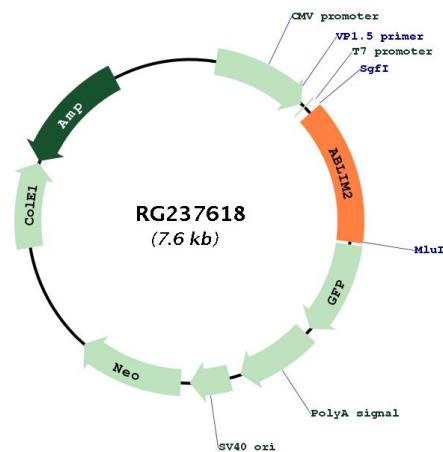
MFAEGEEMYLQSSSIWHPACRQAARTEDRNKETRTSSESIISVPASSTSGSPSRVIYAKLGG EILDYRD
 LAALPKSKAIYDIDRPDMI SYSPYISHSAGDRQSYGESPLL SPTPTEGDQDDRSYKQCRTSSPSSTGS
 VSLGRYTPTSRSPQHYSRPDTGVKDNIYRKPIIYRQHAARRSDGEDGSLDQDNKQKSSWMLKGDADT
 RTNSPDLDTQSLSHSSGTRDPLQRMAGDSFHSRFPYKSDPLPGHGKNGLDQRNANLAPCGADPDASW
 GMREYKIYPYDSLIVTNRIRVKLPKDVDRTRLERHLSPEEFQEVFGMSIEEFDRLALWKRNDLKKKALL
 F
 TRTRPLEMESDESGLPAMEIECRITGTLNGVEFELVGGGEGTPEQGRMTNKMSTKGALTFSPYLLSHV
 MGYGFYHFGTYPSTYENPFLHAINNGGYNTRIEKYEDGGVLHVSFSYRYEAGRVIGDFKVMGTGFPED
 SVIFTDKIIRS NATVEHLHPMGDNDLDGSFTRTFSLRDGGYSSVVD SHMHFKSAIHPSILQNGGPMFA
 FRRVEEDHSNTELGIVEYQHAFKTPDADAGEERV

Restriction Sites: SgfI-MluI

Cloning Scheme:



Plasmid Map:



ACCN:	NM_001286688
ORF Size:	1038 bp
OTI Disclaimer:	The molecular sequence of this clone aligns with the gene accession number as a point of reference only. However, individual transcript sequences of the same gene can differ through naturally occurring variations (e.g. polymorphisms), each with its own valid existence. This clone is substantially in agreement with the reference, but a complete review of all prevailing variants is recommended prior to use. More info
OTI Annotation:	This clone was engineered to express the complete ORF with an expression tag. Expression varies depending on the nature of the gene.
Components:	The ORF clone is ion-exchange column purified and shipped in a 2D barcoded Matrix tube containing 10ug of transfection-ready, dried plasmid DNA (reconstitute with 100 ul of water).
RefSeq:	NM_001286688.2
RefSeq Size:	3036 bp
RefSeq ORF:	1041 bp
Locus ID:	84448
UniProt ID:	Q6H8Q1
Cytogenetics:	4p16.1
Protein Pathways:	Axon guidance
MW:	39.4 kDa
Gene Summary:	May act as scaffold protein. May stimulate ABRA activity and ABRA-dependent SRF transcriptional activity.[UniProtKB/Swiss-Prot Function]