

## Product datasheet for **RG237611**

### GRASP65 (GORASP1) (NM\_001278789) Human Tagged ORF Clone

#### Product data:

Product Type:	Expression Plasmids
Product Name:	GRASP65 (GORASP1) (NM_001278789) Human Tagged ORF Clone
Tag:	TurboGFP
Symbol:	GRASP65
Synonyms:	GOLPH5; GRASP65; P65
Mammalian Cell Selection:	Neomycin
Vector:	pCMV6-AC-GFP (PS100010)
E. coli Selection:	Ampicillin (100 ug/mL)
ORF Nucleotide Sequence:	>RG237611 representing NM_001278789. Blue=ORF Red=Cloning site Green=Tag(s)

```
GCTCGTTTGTGAACCGTCAGAATTTGTAAACGACTCACTATAGGGCGGCCGGGAATTCGTCGACTG
GATCCGGTACCGAGGAGATCTGCCGCCGCGATCGCC
ATGGGCTGGGCGTCAGCGCTGAGCAGCCCGAGGCGGCCGAGGGCTCCACCTCCACGGGGATGTG
GAACCATCTTCACCTGCTGCCCTTGCCGGCTGCGCCCTACACAGACTATGTGGTTGGTTCGGACCAG
ATTCTCCAGGAGTCCGAGGACTTCTTTACGCTCATCGAGTCTCATGAGGGGAAGCCCTTGAAGCTGATG
GTGTAACTCCAAGTCAGACTCCTGCCGGGAGGTGACTGTAACCCAACGCAGCCTGGGGTGGAGAG
GGCAGTCTGGGATGTGGCATTGGCTATGGGTATCTACACCGATCCCAACTCAGCCCCCAGCTACCAC
AAGAAGCCACCTGGCACCCACCACCTTCTGCTCTACCACTTGGTCCCCACCACCTGATGCTCTACCA
CCTGGACCCACCCCGAGGACTCTCCTTCCCTGGAGACAGGTTCCAGGCAGAGTGACTACATGGAGGCC
CTGCTGCAGGCACCTGGCTCCTCCATGGAGGATCCCCCTTCTGGGCTGGGAGTCCAGCCACAGTGCT
CCAGACCTGATGGACTTCCCCATTTTCATGGAGACTCCTCTTCCAGCCCCACCTCCAGTGCAGCGAGTT
ATGGACCCAGGCTTCTGGAGCTGTGCGGAATTTCTCTTGGACAACAGCAATGCCAGTGTGTGGCCC
AGCCTGCCCTCTCCACAGAAGTACCACACAGCTGTCTCAACCTCAGGGCCAGAGGACATCTGTCTC
AGCAGCAGTTCATGAGCGGGTGGTGGGCTACATGGTCTGGGTCAGAGTTTGGGTCTCCTTCTCTG
GACAGCCAGGTGCCAAGCCAGGCGGACCACCTGCCTCAGCTGACTCTTCTGACAGTCTCACCTCT
GCAGCCTCACCAGAAGATGGGCTGTCCGCCGAGCTGCTTGAAGCTCAGGCTGAGGAGGAACCAGCAAGC
ACAGAGGCCCTAGATACTGGGACGGAGGCTGAGGGGCTGGACAGCCAGGCCAGATCTCTACCACAGAA
ACGCGTACGCGGCCGCTCGAG - GFP Tag - GTTTAAAC
```



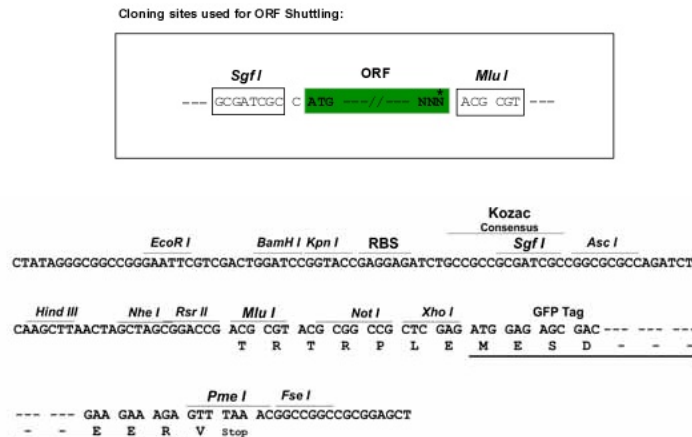
[View online »](#)

**Protein Sequence:** >Peptide sequence encoded by RG237611  
 Blue=ORF Red=Cloning site Green=Tag(s)

MGLGVSAEQPAGGAEGFHLHGDVEPSSPAALAGLRPYTDYVVGSDQILQESEDFFTLIESHEGKPLKLM  
 VYNSKSDSCREVTVPNAAWGGEGSLGCGIGYGYLHRIPTQPPSYHKKPPGTPPPSALPLGAPPDALP  
 PGPTPEDSPSLETGSRQSDYMEALLQAPGSSMEDPLPGPGSPSHSAPDPDGLPHFMETPLQPPPVQRV  
 MDPGFLDVSGISLLDNSNASVWPSLPSSTELTTTAVSTSGPEDICSSSSSHERGGEATWSGSEFEVSFL  
 DSPGAQAQADHLPQLTLPDSL TSAASPEDGLSAELLEAQAE EEPASTEGLDTGTEAEGLDSQAQISTTE  
**TR**TRPLEMESDESGLPAMEIECRITGTLNGVEFELVGGGEGTPEQGRMTNKMKSTKGALTFSPYLLSHV  
 MGYGFYHFGTYPSTYENPFLHAINNGGYNTRIEKYEDGGVLHVSFSYRYEAGRVIGDFKVMGTGFPED  
 SVIFTDKIIRSNATVEHLHPMGDNDLDGSFTRTFSLRDGGYSSVVD SHMHFKSAIHPSILQNGGPMFA  
 FRRVEEDHSNTELGIVEYQHAFKTPDADAGEERV

**Restriction Sites:** SgfI-MluI

**Cloning Scheme:**



**ACCN:** NM\_001278789

**ORF Size:** 1035 bp

**OTI Disclaimer:** The molecular sequence of this clone aligns with the gene accession number as a point of reference only. However, individual transcript sequences of the same gene can differ through naturally occurring variations (e.g. polymorphisms), each with its own valid existence. This clone is substantially in agreement with the reference, but a complete review of all prevailing variants is recommended prior to use. [More info](#)

**OTI Annotation:** This clone was engineered to express the complete ORF with an expression tag. Expression varies depending on the nature of the gene.

**Components:** The ORF clone is ion-exchange column purified and shipped in a 2D barcoded Matrix tube containing 10ug of transfection-ready, dried plasmid DNA (reconstitute with 100 ul of water).

**RefSeq:** [NM\\_001278789.2](#)

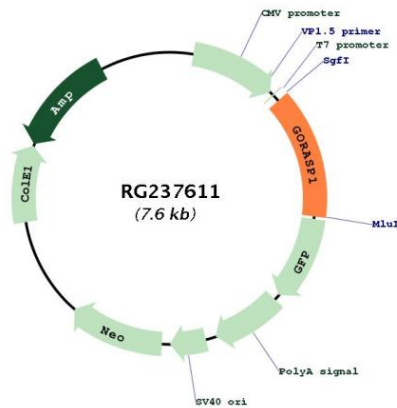
**RefSeq Size:** 3041 bp

**RefSeq ORF:** 1038 bp

**Locus ID:** 64689  
**UniProt ID:** [Q9BQQ3](#)  
**Cytogenetics:** 3p22.2  
**MW:** 36.2 kDa

**Gene Summary:** The Golgi complex plays a key role in the sorting and modification of proteins exported from the endoplasmic reticulum. The protein encoded by this gene is a membrane protein involved in establishing the stacked structure of the Golgi apparatus. It is a caspase-3 substrate, and cleavage of this encoded protein contributes to Golgi fragmentation in apoptosis. This encoded protein can form a complex with the Golgi matrix protein GOLGA2, and this complex binds to the vesicle docking protein p115. Alternative splicing results in multiple transcript variants of this gene. [provided by RefSeq, Jul 2013]

**Product images:**



Circular map for RG237611