

Product datasheet for **RG237607**

GTF3C5 (NM_001286709) Human Tagged ORF Clone

Product data:

Product Type:	Expression Plasmids
Product Name:	GTF3C5 (NM_001286709) Human Tagged ORF Clone
Tag:	TurboGFP
Symbol:	GTF3C5
Synonyms:	TFiiiC2-63; TFIIIC63; TFIIICepsilon
Mammalian Cell Selection:	Neomycin
Vector:	pCMV6-AC-GFP (PS100010)
E. coli Selection:	Ampicillin (100 ug/mL)
ORF Nucleotide Sequence:	>RG237607 representing NM_001286709. Blue=ORF Red=Cloning site Green=Tag(s)

```
GCTCGTTTAGTGAACCGTCAGAATTTGTAAACGACTCACTATAGGGCGCCGGGAATTCGTCGACTG
GATCCGGTACCGAGGAGATCTGCCGCCCGCATCGCC
ATGTGGCTAAGATGCTGCCGACTCTGGCGGCGAGGAAGGCGTCTCCCGGGAAGGCTACAACAATCCC
CCCATCTCAGGTGAGAATCTGATTGGCCTGAGCAGAGCCCGGCGCCCCACAATGCCATCTTTGTCAAC
TTTGAGGATGAGGAGGTGCCAAGCAGCCACTGGAGGCTGCAGCCAGACGTGGAGGAGAGTCTGCACT
AACCCCGTGACCGGAAGGTGGAGGAGGAGCTGAGGAAGCTGTTGACATCCGTCATCTGGTCCCGA
AATGCTGTCAAGCCAACATCAGCGTCCACCCAGACAAGCTCAAGGTCTTGCTTCCCTTCATAGCCTAT
TACATGATAACAGGCCCTGGCGCAGCCTATGGATTTCGATTTGGGTATGACCCCCGAAAAACCCAGAT
GCCAAGATTTATCAAGTCTCGATTTCCGAATCCGTTGTGGAATGAAACACGGTTACGCCCCAGTGAC
TTGCCGGTCAAAGCAAAGCGCAGCACCTACAACACTACAGCCTCCCCATCACCGTCAAGAAGACATCCAGC
CAGCTTGTCAACATGCATGACCTGAAGCAGGGCCTGGGCCGTCGGGGACGAGTGGTGCTCGGAAACCA
GCTTCCAGCAAGTACAAGCTCAAGGACTGTCTACATCTCCGGGAAGGGGCCTTGCCACCCTATCGG
CAGATGTTCTACCAGTTATGCGACTTGAATGTGGAAGAGTTGCAGAAGATCATTACCCGCAATGACGGG
GCAGAGAATTCCTGCACAGAACGGGATGGGTGGTGCCTCCCAAGACCAGCGACGAGCTCAGGGACACC
ATGTCCCTCATGATCCGGCAGACCATCCGCTCCAAGAGGCCTGCTCTTTTCCAGCTCAGCCAAGGCT
GATGGCGGAAAAGAGCAGCTGACGTACGAGTCTGGGGAAGACGAGGAGGATGAGGAGGAGGAGGAGAG
GAGGAGGAGGACTTCAAGCCATCCGACGCGAGTAAAACGAAATGGAGACAGAGATTCTGGACTACGTG
ACGCGTACGCGGCCGCTCGAG - GFP Tag - GTTTAAAC
```



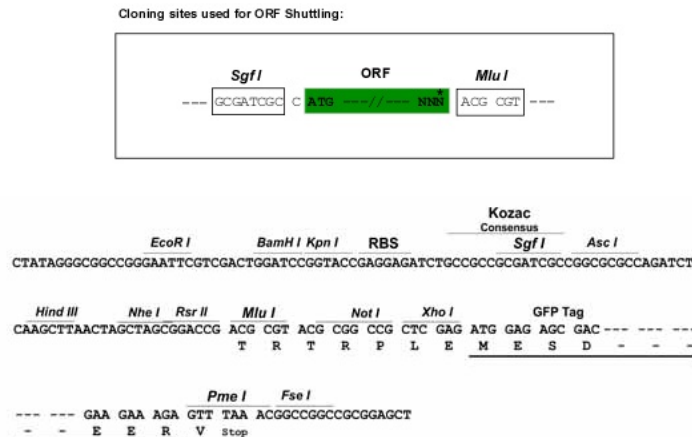
[View online »](#)

Protein Sequence: >Peptide sequence encoded by RG237607
 Blue=ORF Red=Cloning site Green=Tag(s)

MWLRCRCLWAARKASPGEGYNNPPISGENLIGLSRARRPHNAIFVNFEEDEVPKQPLEAAAQTWRRVCT
 NPVDRKVEEELRKLDIRPIWSRNVKANI SVHPDKLVLLPF IAYYMITGPWRSWIRFGYDPRKNPD
 AKIYQVLDFRIRCGMKHGYAPSDLPVKAKRSTYNYSLPITVKKTS SQLVTMHDLKQGLGPSGTSGARKP
 ASSKYKLDKDSVYIFREGALPPYRQMFYQLCDLNVHEELQKI IHRNDGAENSCTERDGLPKTSDLRDT
 MSLMIRQTI RSKRPALFSSSAKADGGKEQLTYESGEDEEDEEEEEEDFKPSDGENEMETEILDYV
 TRTRPLEMESDESGLPAMEIECRITGTLNGVEFELVGGGEGTPEQGRMTNKMKSTKGALTFSPYLLSHV
 MGYGFYHFGTYPSTYENPFLHAINNGGYTNTRIEKYEDGGVLHVSFSYRYEAGRVIGDFKVMGTGFPEP
 SVIFTDKIIRSNATVEHLHPMGDNDLDGSFTRTFSLRDGGYSSVVD SHMHFKSAIHPSILQNGGPMFA
 FRRVEEDHSNTELGIVEYQHAFKTPDADAGEERV

Restriction Sites: SgfI-MluI

Cloning Scheme:



ACCN: NM_001286709

ORF Size: 1035 bp

OTI Disclaimer: The molecular sequence of this clone aligns with the gene accession number as a point of reference only. However, individual transcript sequences of the same gene can differ through naturally occurring variations (e.g. polymorphisms), each with its own valid existence. This clone is substantially in agreement with the reference, but a complete review of all prevailing variants is recommended prior to use. [More info](#)

OTI Annotation: This clone was engineered to express the complete ORF with an expression tag. Expression varies depending on the nature of the gene.

Components: The ORF clone is ion-exchange column purified and shipped in a 2D barcoded Matrix tube containing 10ug of transfection-ready, dried plasmid DNA (reconstitute with 100 ul of water).

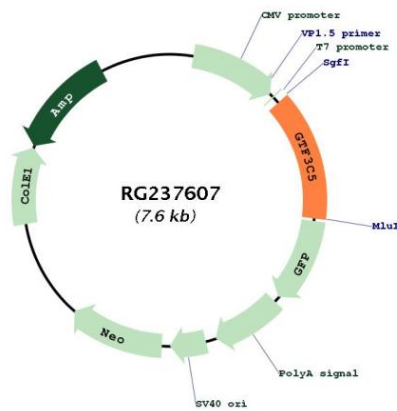
RefSeq: [NM_001286709.1](#), [NP_001273638.1](#)

RefSeq Size: 2017 bp

RefSeq ORF: 1038 bp

Locus ID: 9328
UniProt ID: [Q9Y5Q8](#)
Cytogenetics: 9q34.13
Protein Families: Transcription Factors
MW: 40.1 kDa
Gene Summary: Involved in RNA polymerase III-mediated transcription. Integral, tightly associated component of the DNA-binding TFIIIC2 subcomplex that directly binds tRNA and virus-associated RNA promoters.[UniProtKB/Swiss-Prot Function]

Product images:



Circular map for RG237607