

## Product datasheet for **RG237593**

### Sex Hormone Binding Globulin (SHBG) (NM\_001289113) Human Tagged ORF Clone

#### Product data:

Product Type:	Expression Plasmids
Product Name:	Sex Hormone Binding Globulin (SHBG) (NM_001289113) Human Tagged ORF Clone
Tag:	TurboGFP
Symbol:	Sex Hormone Binding Globulin
Synonyms:	ABP; SBP; TEBG
Mammalian Cell Selection:	Neomycin
Vector:	pCMV6-AC-GFP (PS100010)
E. coli Selection:	Ampicillin (100 ug/mL)
ORF Nucleotide Sequence:	>RG237593 representing NM_001289113. Blue=ORF Red=Cloning site Green=Tag(s)

```
GCTCGTTTGTAGTGAACCGTCAGAATTTTGTAAACGACTCACTATAGGGCCGCCGGGAATTCGTCGACTG
GATCCGGTACCGAGGAGATCTGCCGCCGCGATCGCC
ATGACCTTTGACCTACCAAGATCACAAAAACCTCCTCCTCCTTTGAGGTTCGAACCTGGGACCCAGAG
GGAGTGATTTTTATGGGGATACCAACCCTAAGGATGACTGGTTTATGCTGGGACTTCGAGACGGCAGG
CCTGAGATCCAACCTGCACAATCACTGGGCCAGCTTACGGTGGGTGCTGGACCACGGCTGGATGATGGG
AGATGGCACCAGGTGGAAGTCAAGATGGAGGGGGACTCTGTGCTGCTGGAGGTGGATGGGAGGAGGTG
CTGCGCCTGAGACAGGTCTCTGGGCCCTGACCAGCAAACGCCATCCCATCATGAGGATTGCGCTTGGG
GGGCTGCTCTTCCCGCTTCCAACCTTCGGTTGCCGCTGGTTCCCTGCCCTGGATGGCTGCCTGCGCCGG
GATTCTGGCTGGACAAACAGGCCGAGATCTCAGCATCTGCCCCACTAGCCTCAGAAGCTGTGATGTA
GAATCAAATCCCGGGATATTTCTCCCTCCAGGGACTCAGGCAGAAATCAATCTCCGAGACATTTCCAG
CCTCATGCAGAGCCCTGGGCTTCTCTTTGGACCTGGGACTCAAGCAGGCAGCAGGCTCAGGCCACCTC
CTTGCTCTTGGGACACCAGAGAACCCTCTTGGCTCAGTCTCCACCTCCAAGATCAAAGGTGGTGTG
TCTTCTGGGTGGGGCCAGGGCTGGATCTGCCCTGGTCTTGGGACTCCCTCTTCCAGCTGAAGCTGAGT
ATGTCCAGGTGGTCTTGGCCAAGGTCGAAGATGAAGGCCCTGCCCTGCCTCCCTTAGGCTGGCT
CCCCTCCTAACCTCTGGCCAAGCCTCAAGGGCGTCTCTTCTGGGGGCTTTACCAGGAGAAGACTCT
TCCACCTCTTTTGCCTGAATGGCCTTTGGGCACAAGGTCAGAGGCTGGATGTGGACCAGGCCCTGAAC
AGAAGCCATGAGATCTGGACTCACAGCTGCCCCAGAGCCAGGCAATGGCACTGACGCTTCCCAT
ACGCGTACGCGGCCGCTCGAG - GFP Tag - GTTAAAC
```



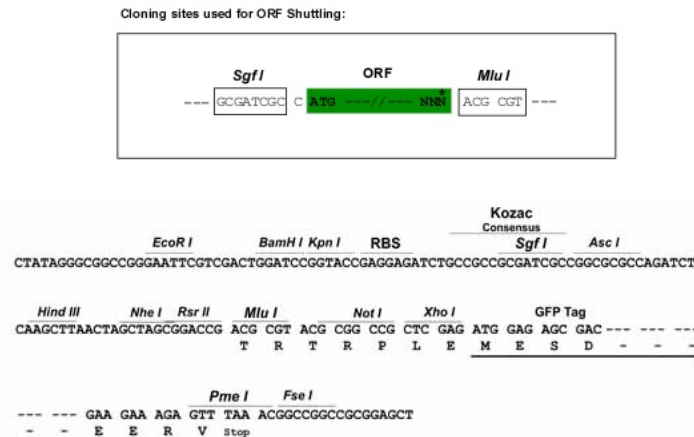
[View online »](#)

**Protein Sequence:** >Peptide sequence encoded by RG237593  
 Blue=ORF Red=Cloning site Green=Tag(s)

MTFDLTKITKTSSEFEVRTWDPEGVIFYGDTNPKDDWFMLGLRDGRPEIQLHNNHWAQLTVGAGPRLDDG  
 RWHQVEVKMEGDSVLLLEVDGEEVRLRQVSGPLTSKRHPIMRIALGGLLFPASNLRLPLVPALDGCLRR  
 DSWLDKQAEISASAPTSRLRSCDVEVSNPGIFLPPGTQAEFNLRDIPQPHAEPWAFSLDLGLKQAAGSGHL  
 LALGTPENPSWLSLHLQDQKVVLSSGSGPGLDLPLVLGLPLQLKLSMSRVVLSQGSKMKALALPPLGLA  
 PLLNLWAKPQGRFLGALPGEDSSTSFCLNGLWAQGRLDVDQALNRSHEIWTWSCPQSPNGTDASH  
**TRTRPLEMESDESGLPAMEIECRITGTLLNGVEFELVGGGEGTPEQGRMTNKMKSTKGALTFSPYLLSHV**  
 MGYGFYHFGTYPYSGYENPFLHAINNGGYNTRIEKYEDGGVLHVSFSYRYEAGRVIGDFKVMGTGFPEP  
 SVIFTDKIIRSNATVEHLHPMGDNDLDGSFTRTFSLRDGGYSSVVDSHMHFKSAIHPSILQNGGPMFA  
 FRRVEEDHSNTELGIVEYQHAFKTPDADAGEERV

**Restriction Sites:** SgfI-MluI

**Cloning Scheme:**



**ACCN:** NM\_001289113

**ORF Size:** 1032 bp

**OTI Disclaimer:** The molecular sequence of this clone aligns with the gene accession number as a point of reference only. However, individual transcript sequences of the same gene can differ through naturally occurring variations (e.g. polymorphisms), each with its own valid existence. This clone is substantially in agreement with the reference, but a complete review of all prevailing variants is recommended prior to use. [More info](#)

**OTI Annotation:** This clone was engineered to express the complete ORF with an expression tag. Expression varies depending on the nature of the gene.

**Components:** The ORF clone is ion-exchange column purified and shipped in a 2D barcoded Matrix tube containing 10ug of transfection-ready, dried plasmid DNA (reconstitute with 100 ul of water).

**RefSeq:** [NM\\_001289113.1](#), [NP\\_001276042.1](#)

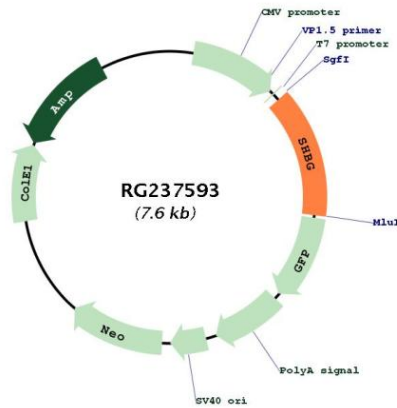
**RefSeq Size:** 1326 bp

**RefSeq ORF:** 1035 bp

**Locus ID:** 6462  
**UniProt ID:** [P04278](#)  
**Cytogenetics:** 17p13.1  
**Protein Families:** Druggable Genome, Secreted Protein  
**MW:** 37.9 kDa

**Gene Summary:** This gene encodes a steroid binding protein that was first described as a plasma protein secreted by the liver but is now thought to participate in the regulation of steroid responses. The encoded protein transports androgens and estrogens in the blood, binding each steroid molecule as a dimer formed from identical or nearly identical monomers. Polymorphisms in this gene have been associated with polycystic ovary syndrome and type 2 diabetes mellitus. Alternative splicing results in multiple transcript variants. [provided by RefSeq, Jan 2014]

### Product images:



Circular map for RG237593