

Product datasheet for **RG237590**

FAM71F1 (NM_001282788) Human Tagged ORF Clone

Product data:

Product Type:	Expression Plasmids
Product Name:	FAM71F1 (NM_001282788) Human Tagged ORF Clone
Tag:	TurboGFP
Symbol:	FAM71F1
Synonyms:	FAM137A; NYD-SP18
Mammalian Cell Selection:	Neomycin
Vector:	pCMV6-AC-GFP (PS100010)
E. coli Selection:	Ampicillin (100 ug/mL)
ORF Nucleotide Sequence:	>RG237590 representing NM_001282788. Blue=ORF Red=Cloning site Green=Tag(s)

```
GCTCGTTTGTGAAACCGTCAGAATTTGTAAATACGACTCACTATAGGGCGCCGGGAATTCGTCGACTG
GATCCGGTACCGAGGAGATCTGCCGCCGCGATCGCC
ATGTTGTCATCATTTCCACATAGAAAGACTTGGAGGAAATCAAAGAAGACAGTAAAAGTCACAAGATCC
TATCCAACCTTCCTTCCTGAATGCCTGGGAAGAATTCAGGGGCCTCTGCCTGTGGATGGAGAGCCG
AACCTGGAGCGGGCCTAGGTGTGGAGGAGGGACTGCTCTGCCGGGTGGTTCATTCTCCAGAATCAAC
CTGTTTCTTGACTCCGTGGTGTGAAAGCAACTTCATCCAGGTCAAAGGGGCAGGAATTGGAGAGAC
GTCTACAAAGCTTCCAACACCATGGCCCTGGGGGTGACCTCCTCGGTACCCTGCCTGCCCTCCCCAAC
ATCCTACTCATGGCCAGTGTCAAATGGCACCAGGGGCAGAACAGACATGGAACAGACCATCCATAGCC
CCCAACATCTTCCTGAAGAGGATTCTCCATTGAGGTTTGTGGAGCTCCAGGTATGTGACCACTATCAA
CGCATCCTGCAGTTGAGGACAGTCACTGAGAAGATTTATTACCTAAAGCTCCATCCTGACCATCCTGAG
ACTGTCTTCCACTTCTGGATCCGACTGGTTCAAATTCTGCAAAAGGGGCTGTCCATCACCACCAAAGAC
CCTAGGATTCTTGTACGCAGTGCCTGGTACCCAAGAAGTGCAGCAGCCCTCAGGAGATTGCAAGTTA
GTACAGAAGAACTCCAAGCCTCCAGCCAGCGAGAGTCTCATTAGCTAATGACCAAGGGGGAGAGT
GAAGCCCTGTCTCAGATTTTCCGACTTACACCAGCAGAACCAGTTGAGGAGCAGCAGAAAGGTGGAG
ACCAACAAGAAGCAGCTCAGGAAAGATTCTTCCCGTGAAGACAGCATCCCTTGCACCTGTGACCTACGT
TGGAGGGCTTCATTCACGTACGGAGAGTGGAAAGAGAGAACCCCTCCGGCCTGCAGCCCTCTCACTA
CTCAGCACTCTGGCAGCCTCCACCGGGCCACAGCTGGCCCAACCCATAGGAAATTCATT
ACGCGTACGCGGCCGCTCGAG - GFP Tag - GTTAAAC
```



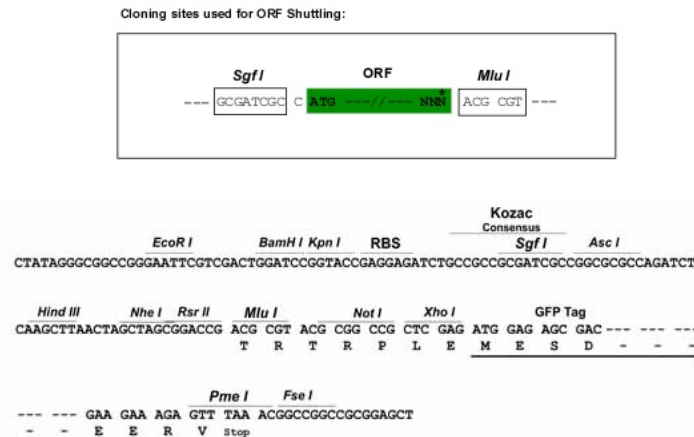
[View online »](#)

Protein Sequence: >Peptide sequence encoded by RG237590
 Blue=ORF Red=Cloning site Green=Tag(s)

MLSSFPHRKTWRKSKKTVKVTRSYPTFPSLNAWEEFRGLLPVDGEPNPGAGLGVEEGLLCRVVHSPEFN
 LFLDSVVFESNFIQVKRGRNWRDVKASNTMALGVTSSVPCLPLNILLMASVKWHQGQNTWNRPSIA
 PNIFLKRILPLRFVELQVCDHYQRILQLRTVTEKIYYLKLHPDHPETVFHFWIRLVQILQKGLSITTKD
 PRILVTHCLVPKNCSSPSGSKLVQKKLQASQPSESLIQLMTKGESEALSQIFADLHQQNLRSSRKVE
 TNKNSSGKDSREDSIPCTCDLRWRASFYGEWERENPSGLQPLSLLSTLAASTGPQLAPPIGNSI
 TRTRPLEMESDESGLPAMEIECRITGTLNGVEFELVGGGEGTPEQGRMTNKMSTKGALTFSPYLLSHV
 MGYGFYHFGTYPSTYENPFLHAINNGGYNTRIEKYEDGGVLHVSFSYRYEAGRVIGDFKVMGTGFPEP
 SVIFTDKIIRSNAIVEHLHPMGDNDLDGSFTRTFSLRDGGYSSVVDSHMHFKSAIHPSILQNGGPMFA
 FRRVEEDHSNTELGIVEYQHAFKTPDADAGEERV

Restriction Sites: SgfI-MluI

Cloning Scheme:



ACCN: NM_001282788

ORF Size: 1026 bp

OTI Disclaimer: The molecular sequence of this clone aligns with the gene accession number as a point of reference only. However, individual transcript sequences of the same gene can differ through naturally occurring variations (e.g. polymorphisms), each with its own valid existence. This clone is substantially in agreement with the reference, but a complete review of all prevailing variants is recommended prior to use. [More info](#)

OTI Annotation: This clone was engineered to express the complete ORF with an expression tag. Expression varies depending on the nature of the gene.

Components: The ORF clone is ion-exchange column purified and shipped in a 2D barcoded Matrix tube containing 10ug of transfection-ready, dried plasmid DNA (reconstitute with 100 ul of water).

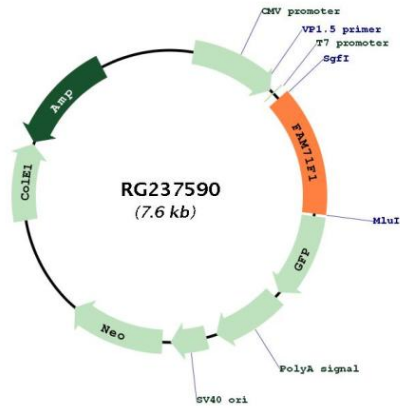
RefSeq: [NM_001282788.2](#)

RefSeq Size: 1775 bp

RefSeq ORF: 1029 bp

Locus ID: 84691
 UniProt ID: [Q96KD3](#)
 Cytogenetics: 7q32.1
 MW: 39.2 kDa

Product images:



Circular map for RG237590