

Product datasheet for **RG237574**

RPP40 (NM_001286132) Human Tagged ORF Clone

Product data:

Product Type:	Expression Plasmids
Product Name:	RPP40 (NM_001286132) Human Tagged ORF Clone
Tag:	TurboGFP
Symbol:	RPP40
Synonyms:	bA428J1.3; RNASEP1
Mammalian Cell Selection:	Neomycin
Vector:	pCMV6-AC-GFP (PS100010)
E. coli Selection:	Ampicillin (100 ug/mL)
ORF Nucleotide Sequence:	>RG237574 representing NM_001286132. Blue=ORF Red=Cloning site Green=Tag(s)

```
GCTCGTTTGTAGTGAACCGTCAGAATTTTGTAAACGACTCACTATAGGGCGCCGGGAATTCGTCGACTG
GATCCGGTACCGAGGAGATCTGCCGCCCGCATCGCC
ATGGCCACGCTGCGCCGGCTTCGGGAGGCGCCGGCCTACTGGTTTGCAGAGAAATCCAATTCGGC
AACCAAGTCGCGCCACCGGCATCTTGTGCAGACGCACTACTATAACTACAGGGTTTCATTTCTCATT
CCTGAATGTGGGATACTATCGGAAGAACTGAAAAACCTGGTCATGAACACTGGACCCTATTACTTTGTG
AAGAATTTACCTTTCATGAATTAATTACACCTGAATTCATCAGTACCTTATAAAGAAAGGAAATTA
ATTTTGTCACTGGATAAAGACACTTATGAAGAACTGGACTTCAGGGTCATCCATCTCAGTTTTCTGGC
AGAAAAATATGAAATTTATTGTTTCCATTGATTTGATGGAATTATCCTTAAACTGGATTCTAAGAAG
TATGAAAGAATATCTTGGTCTTTCAAAGAAAAGAAGCCATTGAAATTTGATTTTCTTTGGCTTGGCAT
AAAACAGGTTTCAGAAGAATCGACAATGATGTCATATTTTTCCAAGTACCAAATTCAGGAGCATCAGCCA
AAAGTAGCACTGAGCACGTTGAGAGATCTCCAGTGCCAGTGCTGCAGAGCAGCGAGCTGGAGGGAACG
CCAGAGGTGTCTGCCGGGCTCTGGAGCTCTCGACTGGCTCGGCCTCTTCAGTAATGTGACCTA
AATAATGAGCCTAATAATTTTCATATCAACCTATTGCTGTCTGCTGAGCCAAGCACAGTGGTGGCAAAAGCT
TATTTGTGTACAATCACTGGCTTCATACTCCAGAGAAGATCTGTCTCCTATTGGAACATCTCTGTAC
TACTTTGATGAACCGAAGTTAGCTCCATGGGTTACTGTCCGTTCAAGGCTTTGCAGACAGCCCTGTT
TCTTGGGAAAAAATGAACATGGTTTTTCGAAAAGGAGGAGAACATTTATATAACTTTGTGATTTTTAAT
AATCAGGACTATTGGCTTCAGATGGCTGTTGGGCAAAATGATCACTGTCCACCA
ACGCGTACGCGGCCGCTCGAG - GFP Tag - GTTTAAAC
```



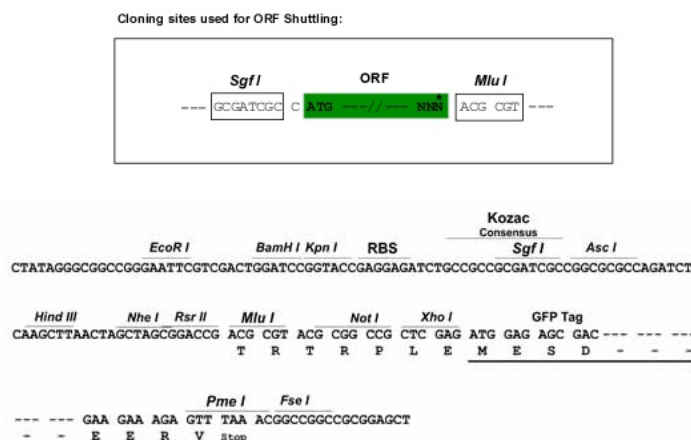
[View online »](#)

Protein Sequence: >Peptide sequence encoded by RG237574
 Blue=ORF Red=Cloning site Green=Tag(s)

MATLRRLREAPRHLLVCEKSNFGNHKSRHRHLVQTHYNYRVSFLLIPECGILSEELKNLVMNTGPPYFV
 KNLPLHELITPEFISTFIKKGKLLSLDKDYEETGLQGHP SQFSGRKIMKFIVSIDLMELSLNLD SKK
 YERISWSFKEKKPLKDFLLAWHKTGSEESTMMSYF SKYQIQEHQPKVALSTLRDLQCPVLQSSELEGT
 PEVSCRALELFDWLGAVF SNVDL NNEPNNFISTYCCPEPSTV VAKAYLCTITGFI LPEKICLLLEHLCH
 YFDEPKLAPWVTL SVQGFADSPVSWEKNEHGFRKGGEHL YNFVIFNNQDYWLQMAVGANDHCPP
TRTRPLEMESDESGLPAMEIECRITGTLNGVEFELVGGGEGTPEQGRMTNKMKSTKGALTFSPYLLSHV
 MGYGFYHFGTYP SGYENPFLHAINNGGYNTRIEKYEDGGVLHVSFSYRYEAGRVIGDFKVMGTGFPEP
 SVIFTDKIIRSNATVEHLHPMGDNDLDGSFTRTFLRDGGYSSVVD SHMHFKSAIHPSILQNGGPMFA
 FRRVEEDHSNTELGIVEYQHAFKTPDADAGEERV

Restriction Sites: SgfI-MluI

Cloning Scheme:



ACCN: NM_001286132

ORF Size: 1020 bp

OTI Disclaimer: The molecular sequence of this clone aligns with the gene accession number as a point of reference only. However, individual transcript sequences of the same gene can differ through naturally occurring variations (e.g. polymorphisms), each with its own valid existence. This clone is substantially in agreement with the reference, but a complete review of all prevailing variants is recommended prior to use. [More info](#)

OTI Annotation: This clone was engineered to express the complete ORF with an expression tag. Expression varies depending on the nature of the gene.

Components: The ORF clone is ion-exchange column purified and shipped in a 2D barcoded Matrix tube containing 10ug of transfection-ready, dried plasmid DNA (reconstitute with 100 ul of water).

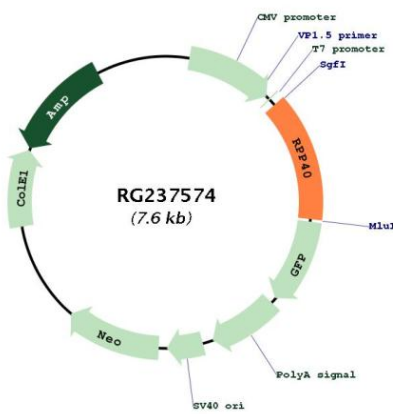
RefSeq: [NM_001286132.2](#)

RefSeq Size: 1131 bp

RefSeq ORF: 1023 bp

Locus ID: 10799
UniProt ID: [O75818](#)
Cytogenetics: 6p25.1
Protein Families: Stem cell - Pluripotency
MW: 39.8 kDa
Gene Summary: Component of ribonuclease P, a ribonucleoprotein complex that generates mature tRNA molecules by cleaving their 5'-ends (PubMed:9630247, PubMed:30454648). Also a component of the MRP ribonuclease complex, which cleaves pre-rRNA sequences (PubMed:28115465). [UniProtKB/Swiss-Prot Function]

Product images:



Circular map for RG237574