

## Product datasheet for **RG237572**

### UBE2Q2 (NM\_001284382) Human Tagged ORF Clone

#### Product data:

Product Type:	Expression Plasmids
Product Name:	UBE2Q2 (NM_001284382) Human Tagged ORF Clone
Tag:	TurboGFP
Symbol:	UBE2Q2
Mammalian Cell Selection:	Neomycin
Vector:	pCMV6-AC-GFP (PS100010)
E. coli Selection:	Ampicillin (100 ug/mL)
ORF Nucleotide Sequence:	>RG237572 representing NM_001284382. Blue=ORF Red=Cloning site Green=Tag(s)

```
GCTCGTTTAGTGAACCGTCAGAATTTGTAAACGACTCACTATAGGGCGCCGGGAATTCGTCGACTG
GATCCGGTACCGAGGAGATCTGCCGCCGCGATCGCC
ATGTCCGTGTCAGGGCTCAAGGCCGAGCTGAAGTTCCTGGCGTCCATCTTCGACAAGAACCACGAGCGA
TTCCGCATCGTCAGTTGGAAGCTGGACGAGCTGCACTGCCAGTTCCTGGTGCCGCAGCAGGGCAGCCCG
CACTCGCTGCCGCCGCACTCACGCTCCACTGCAACATCACGGAATCCTATCCATCTTCTCACCGATA
TGGTTTGTGGATTCTGAAGACCCAAATCTGACATCAGTCTGGAACGCTAGAAAGATACTAAGAACAAC
AATTTGAATGGGACAACAGAAGAAGTGACTTCAGAAGAAGAGGAAGAAGAAGAAGATGGCTGAAGAT
ATAGAAGACTTAGATCACTATGAGATGAAGGAAGAAGAGCCTATTAGTGGGAAAAAGTCAGAGGATGAA
GGAATTGAAAAAGAAAATTTGGCAATATTAGAGAAAATTAGGAAGACTCAAAGGCAAGACATTTAAAT
GGTGCACTGTCTGGGTCAGTGCAAGCTTCAGATAGACTTATGAAAGAGCTCAGGGACATATACAGATCA
CAGAGTTATAAACAGGGATTTATTCAGTGGAACCTATAAATGACAGTTTATGACTGGCATGTTAAA
CTGCAGAAGGTTGACCCTGATAGTCCTTTGCACAGTGATCTTCAGATCTTAAAAGAAAAAGAAGGCATA
GAATATATTTGCTTAACCTCTCTTTAAAGATAACTTTCCATTTGATCCTCCATTTGTTGAGTGGTG
TTACCTGTTCTCTCAGGAGGATGTATTGGGTGGAGGAGCATTATGTATGGAACCTCTCACAAAACAG
GGCTGGAGCAGTGCCTACTCAATAGAATCGGTCATCATGCAAATAAATGCCACCTTAGTCAAAGGCCAAA
GCCAGAGTGCAGTTTGGAGCAAATAAGAATCAATATAATCTAGCAAGAGCCCAACAATCCTATAATTCC
ATTGTACAGATACATGAGAAAAATGGCTGGTACACCCCTCAAAGGAAGATGGC
ACGCGTACGCGGCCGCTCGAG - GFP Tag - GTTTAAAC
```



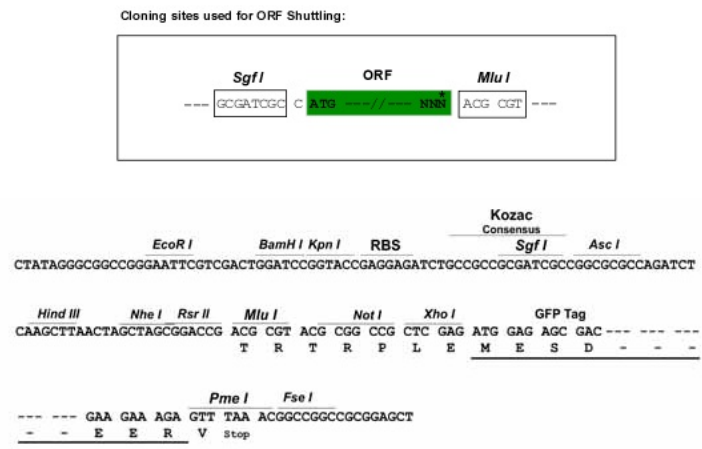
[View online »](#)

**Protein Sequence:** >Peptide sequence encoded by RG237572  
 Blue=ORF Red=Cloning site Green=Tag(s)

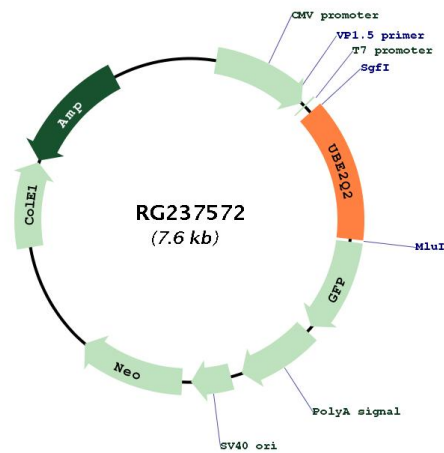
MSVSGLKAELKFLASIFDKNHERFRIVSWKLDLHCQFLVPQQGSPHSLPPPLTLHCNITESYPSSSPI  
 WFVSEDPNLT SVLERLEDTKNNNLNGTTEEVTSEEEEEEMAEDIEDLDHYEMKEEPI SGKSEDE  
 GIEKENLAILEKIRKTQRQDHLNGAVSGSVQASDRMLKELRDIYRSQSYKTGIYSVELINDSLYDWHVK  
 LQKVDPDSPLHSDLQILKEKEGIEYILLNF SFKDNFPDPPFVRVLPVLSGGYVLGGGALCMELLTKQ  
 GWSSAYSIESVIMQINATLVK GKARVQF GANKNQNLARAQQSYNSIVQIHEKNGWYTPPKEDG  
 TRTRPLEMESDESGLPAMEIECRITGTLNGVEFELVGGGEGTPEQGRMTNKMKSTKGALTFSPYLLSHV  
 MGYGFYHFGTYPSTYENPFLHAINNGGYTNTRIEKYEDGGVLHVSFSYRYEAGRVIGDFKVMGTGFPEP  
 SVIFTDKIIRSNATVEHLHPMGDNDLDGSFTRTFSLRDGGYSSVVD SHMHFKSAIHPSILQNGGPMFA  
 FRRVEEDHSNTELGIVEYQHAFKTPDADAGEERV

**Restriction Sites:** SgfI-MluI

**Cloning Scheme:**



**Plasmid Map:**



<b>ACCN:</b>	NM_001284382
<b>ORF Size:</b>	1020 bp
<b>OTI Disclaimer:</b>	The molecular sequence of this clone aligns with the gene accession number as a point of reference only. However, individual transcript sequences of the same gene can differ through naturally occurring variations (e.g. polymorphisms), each with its own valid existence. This clone is substantially in agreement with the reference, but a complete review of all prevailing variants is recommended prior to use. <a href="#">More info</a>
<b>OTI Annotation:</b>	This clone was engineered to express the complete ORF with an expression tag. Expression varies depending on the nature of the gene.
<b>Components:</b>	The ORF clone is ion-exchange column purified and shipped in a 2D barcoded Matrix tube containing 10ug of transfection-ready, dried plasmid DNA (reconstitute with 100 ul of water).
<b>RefSeq:</b>	<a href="#">NM_001284382.2</a>
<b>RefSeq Size:</b>	2999 bp
<b>RefSeq ORF:</b>	1023 bp
<b>Locus ID:</b>	92912
<b>UniProt ID:</b>	<a href="#">Q8WVN8</a>
<b>Cytogenetics:</b>	15q24.2
<b>Protein Pathways:</b>	Ubiquitin mediated proteolysis
<b>MW:</b>	39.1 kDa
<b>Gene Summary:</b>	Accepts ubiquitin from the E1 complex and catalyzes its covalent attachment to other proteins. In vitro catalyzes 'Lys-48'-linked polyubiquitination.[UniProtKB/Swiss-Prot Function]