

Product datasheet for **RG237552**

Protein Kinase A regulatory subunit I alpha (PRKAR1A) (NM_001276290) Human Tagged ORF Clone

Product data:

| | |
|---------------------------|---|
| Product Type: | Expression Plasmids |
| Product Name: | Protein Kinase A regulatory subunit I alpha (PRKAR1A) (NM_001276290) Human Tagged ORF Clone |
| Tag: | TurboGFP |
| Symbol: | PRKAR1A |
| Synonyms: | ACRDYS1; ADOHR; CAR; CNC; CNC1; PKR1; PPNAD1; PRKAR1; TSE1 |
| Mammalian Cell Selection: | Neomycin |
| Vector: | pCMV6-AC-GFP (PS100010) |
| E. coli Selection: | Ampicillin (100 ug/mL) |
| ORF Nucleotide Sequence: | >RG237552 representing NM_001276290. Blue=ORF Red=Cloning site Green=Tag(s) |

```
GCTCGTTTAGTGAACCGTCAGAATTTTGTAAACGACTCACTATAGGGCGGCCGGAATTCGTCGACTG
GATCCGGTACCGAGGAGATCTGCCGCCGCGATCGCC
ATGGAGTCTGGCAGTACCGCCGAGTGGAGGACGCGAGCCTTCGAGAATGTGAGCTCTACGTCCAG
AAGCATAACATTCAGCGCTGCTCAAAGATTCTATTGTGCAGTTGTGCACTGCTCGACCTGAGAGACCC
ATGGCATTCTCAGGGAATACTTTGAGAGGTTGGAGAAGGAGGAGGCAAAACAGATTCAGAATCTGCAG
AAAGCAGGCACTCGTACAGACTCAAGGGAGGATGAGATTTCTCCTCCTCCACCAACCCAGTGGTTAAA
GGTAGGAGGCGACGAGGTGCTATCAGCGCTGAGGTCTACACGGAGGAAGATGCGGCATCCTATGTTAGA
AAGGTTATACAAAAGATTACAAGACAATGGCCGCTTTAGCCAAAGCCATTGAAAAGAATGTGCTGTTT
TCACATCTTGATGATAATGAGAGAAGTGATATTTTTGATGCCATGTTTTCGGTCTCCTTTATCGCAGGA
GAGACTGTGATTCAGCAAGGTGATGAAGGGATAACTTCTATGTGATTGATCAAGGAGAGACGGATGTC
TATGTTAAACAATGAATGGCAACCAAGTGTGGGAAGGAGGAGCTTTGGAGAATTGCTTTGATTTAT
GGAACACCGAGAGCAGCCACTGTCAAAGCAAAGACAAATGTGAAATTGTGGGCAATCGACCGAGACAGC
TATAGAAGAATCCTCATGGGAAGCACACTGAGAAAAGCGGAAGATGTATGAGGAATTCCTTAGTAAAGTC
TCTATTTAGAGTCTCTGGACAAGTGGGAACGTCTTACGGTAGCTGATGCATTGGAACAGTGCAGTTT
GAAGATGGGCAGAAGATTGTGGTGCAGGAGAAACAGGGGATGAGTTCTTATTATTTAGAGGGGTCA
GCTGCTGTGCTACAACGTCGGTCAGAAAATGAAGAGTTTGTGAAGTGGGAAGATTGGGGCCTTCTGAT
TATTTTGGTCACCTCATCATCTCAAGGAGGAGCATTCCCTGGGC
ACGCGTACGCGGCCGCTCGAG - GFP Tag - GTTTAAAC
```



[View online »](#)

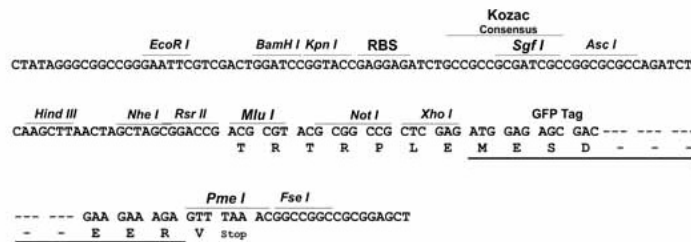
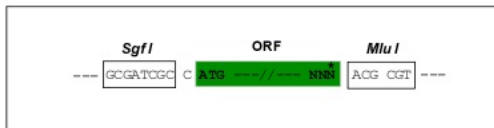
Protein Sequence: >Peptide sequence encoded by RG237552
 Blue=ORF Red=Cloning site Green=Tag(s)

MESGSTAASEEARSLRECELVYQKHNIQALLKDSIVQLCTARPERPMAFLREYFERLEKEEAQIQNLQ
 KAGTRTDSREDEISPPPPNPVVKGRRRRGAI SAEVYTEEDAASYVRKVI PKDYK TMAALAKAIEKNVLF
 SHLDDNERSDIFDAMF SVSFIAGETVIQQGDEGDNFYVIDQGETD VYVNN EWATSVGEGGSFGELALIY
 GTPRAATVKAKTNV KLGIDRDSYRRILMGSTLRKRKMYEEFLSKVSI LESLDKWERLTVADALEPVQF
 EDGQKIVVQGEPEGDEFFIILEGSAAVLQRRSENEEFVEVGR LGPSDYFGHLIIISRRSIPLG
 TRTRPLEMESDESGLPAMEIECRITGTLNGVEFELVGGGEGTPEQGRMTNKMKSTKGALTFSPYLLSHV
 MGYGFYHFGTYP SGYENPFLHAINNGGYTNTRIEKYEDGGVLHVSFSYRYEAGRVIGDFKVMGTGFPED
 SVIFTDKIIRSNATVEHLHPMGDNDLDGSFTRTFSLRDGGYSSVVD SHMHFKSAIHPSILQNGGPMFA
 FRRVEEDHSNTELGIVEYQHAFKTPDADAGEERV

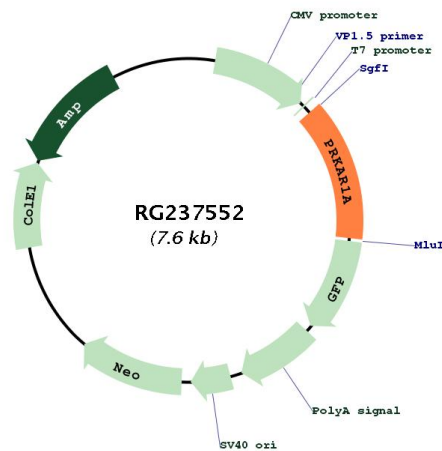
Restriction Sites: Sgfl-MluI

Cloning Scheme:

Cloning sites used for ORF Shutting:



Plasmid Map:



ACCN: NM_001276290

| | |
|--------------------------|---|
| ORF Size: | 1011 bp |
| OTI Disclaimer: | The molecular sequence of this clone aligns with the gene accession number as a point of reference only. However, individual transcript sequences of the same gene can differ through naturally occurring variations (e.g. polymorphisms), each with its own valid existence. This clone is substantially in agreement with the reference, but a complete review of all prevailing variants is recommended prior to use. More info |
| OTI Annotation: | This clone was engineered to express the complete ORF with an expression tag. Expression varies depending on the nature of the gene. |
| Components: | The ORF clone is ion-exchange column purified and shipped in a 2D barcoded Matrix tube containing 10ug of transfection-ready, dried plasmid DNA (reconstitute with 100 ul of water). |
| RefSeq: | NM_001276290.1 , NP_001263219.1 |
| RefSeq Size: | 1218 bp |
| RefSeq ORF: | 1014 bp |
| Locus ID: | 5573 |
| UniProt ID: | P10644 |
| Cytogenetics: | 17q24.2 |
| Protein Families: | Druggable Genome, Transcription Factors |
| Protein Pathways: | Apoptosis, Insulin signaling pathway |
| MW: | 38.5 kDa |
| Gene Summary: | cAMP is a signaling molecule important for a variety of cellular functions. cAMP exerts its effects by activating the cAMP-dependent protein kinase, which transduces the signal through phosphorylation of different target proteins. The inactive kinase holoenzyme is a tetramer composed of two regulatory and two catalytic subunits. cAMP causes the dissociation of the inactive holoenzyme into a dimer of regulatory subunits bound to four cAMP and two free monomeric catalytic subunits. Four different regulatory subunits and three catalytic subunits have been identified in humans. This gene encodes one of the regulatory subunits. This protein was found to be a tissue-specific extinguisher that down-regulates the expression of seven liver genes in hepatoma x fibroblast hybrids. Mutations in this gene cause Carney complex (CNC). This gene can fuse to the RET protooncogene by gene rearrangement and form the thyroid tumor-specific chimeric oncogene known as PTC2. A nonconventional nuclear localization sequence (NLS) has been found for this protein which suggests a role in DNA replication via the protein serving as a nuclear transport protein for the second subunit of the Replication Factor C (RFC40). Several alternatively spliced transcript variants encoding two different isoforms have been observed. [provided by RefSeq, Jan 2013] |