

Product datasheet for **RG237545**

CAB39L (NM_001287339) Human Tagged ORF Clone

Product data:

Product Type:	Expression Plasmids
Product Name:	CAB39L (NM_001287339) Human Tagged ORF Clone
Tag:	TurboGFP
Symbol:	CAB39L
Synonyms:	bA103J18.3; MO2L; MO25-BETA
Mammalian Cell Selection:	Neomycin
Vector:	pCMV6-AC-GFP (PS100010)
E. coli Selection:	Ampicillin (100 ug/mL)
ORF Nucleotide Sequence:	>RG237545 representing NM_001287339. Blue=ORF Red=Cloning site Green=Tag(s)

```
GCTCGTTTAGTGAACCGTCAGAATTTGTAAATACGACTCACTATAGGGCGCCGGGAATTCGTCGACTG
GATCCGGTACCGAGGAGATCTGCCGCCGCGATCGCC
ATGAAAAAAAAATGCCTTTGTTTAGTAAATCACACAAAAATCCAGCAGAAATTGTGAAAATCCTGAAAGAC
AATTTGGCCATTTTGGAAAAGCAAGACAAAAAGACAGACAAGGCTTCAGAAGAAGTGTCTAAATCACTG
CAAGCAATGAAAGAAATCTGTGTGGTACAAACGAGAAAGAACCCCGACAGAAGCAGTGGCTCAGCTA
GCACAAGAACTCTACAGCAGTGGCCTGCTGGTGACTGATAGCTGACCTGCAGCTGATAGACTTTGAG
GAAAAAAAAAGATGTGCCAGATATTTAAACAACATCTTGAGAAGACAGATAGGCACTCGGAGTCCTACT
GTGGAGTATATTAGTGCTCATCCTCATATCCTGTTTATGCTCCTCAAAGGATATGAAGCCCCACAGATT
GCCTTACGTTGTGGGATTATGCTGAGAGAATGTATTCGACATGAACCACTTGCCAAAATCATCCTCTTT
TCTAATCAATTCAGAGATTTCTTAAAGTACGTGGAGTTGTCAACATTTGATATTGCTTCAGATGCCTTT
GCTACTTTCAAGGATTTACTAACCAGACATAAAGTGTTGGTAGCAGACTTCTTAGAACAAAAATTACGAC
ACTATTTTGAAGACTATGAGAAATGCTTCAGTCTGAGAATTATGTTACTAAGAGACAGTCTTTAAAG
CTGCTAGGGGAGCTGATCCTGGACCGTCACAACTTGCCATCATGACAAAGTATATCAGCAAGCCGGAG
AACCTGAAACTCATGATGAACCTCCTTCGGGATAAAAAGTCCCAACATCCAGTTTGAAGCCTTTCATGTT
TTTAAGGTGTTTGTGGCCAGTCTCACAAAACACAGCCTATTGTGGAGATCCTGTAAAAAATCAGCCC
AAACTCATTGAGTTTCTGAGCAGCTTCCAAAAAGAAAGGACGGATGATGAGCAGTTCGCTGACGAGAAG
AACTATTGATTAACAGATCCGAGACTTGAAGAAAAACGCCCCCT
ACGCGTACGCGGCCGCTCGAG - GFP Tag - GTTTAAAC
```



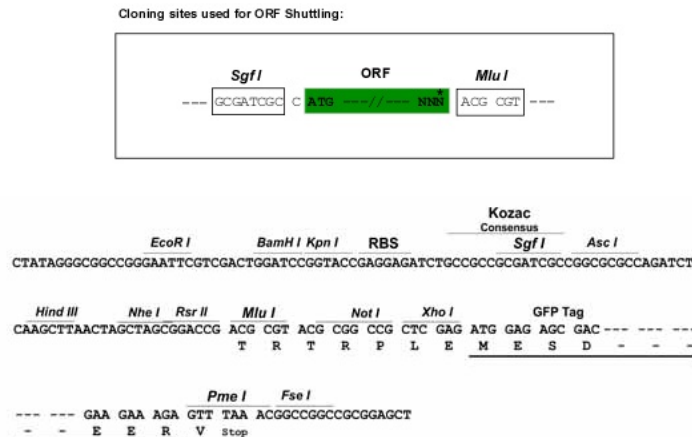
[View online »](#)

Protein Sequence: >Peptide sequence encoded by RG237545
 Blue=ORF Red=Cloning site Green=Tag(s)

MKKMPLFSKSHKNPAEIVKILKDNLAILEKQDKKTDKASEEVSKSLQAMKEILCGTNEKEPTEAVAQL
 AQELYSSGLLVTLIADLQLIDFEEKDVTQIFNNILRRQIGTRSPTVEYISAHPHILFMLLKGYEAPQI
 ALRRCGIMLRECIRHEPLAKIILFSNQFRDFFKYVELSTFDIASDAFATFKDLLTRHKVLVADFLEQNYD
 TIFEDYEKLLQSENYVTKRQSLKLLGELILDRHNFAIMTKYISKPENLKLMMNLLRDKSPNIQFEAFHV
 FKVFVASPHKTQPIVEILLKNQPKLIEFLSSFQKERTDDEQFADEKNYLKQIRDLKKTAP
 TRTRPLEMESDESGLPAMEIECRITGTLNGVEFELVGGGEGTPEQGRMTNKMKSTKGALTFSPYLLSHV
 MGYGFYHFGTYPSTYENPFLHAINNGGYTNTRIEKYEDGGVLHVSFSYRYEAGRVIGDFKVMGTGFPED
 SVIFTDKIIRSNATVEHLHPMGDNDLDGSFTRTFSLRDGGYSSVVDSHMHFKSAIHPSILQNGGPMFA
 FRRVEEDHSNTELGIVEYQHAFKTPDADAGEERV

Restriction Sites: SgfI-MluI

Cloning Scheme:



ACCN: NM_001287339

ORF Size: 1011 bp

OTI Disclaimer: The molecular sequence of this clone aligns with the gene accession number as a point of reference only. However, individual transcript sequences of the same gene can differ through naturally occurring variations (e.g. polymorphisms), each with its own valid existence. This clone is substantially in agreement with the reference, but a complete review of all prevailing variants is recommended prior to use. [More info](#)

OTI Annotation: This clone was engineered to express the complete ORF with an expression tag. Expression varies depending on the nature of the gene.

Components: The ORF clone is ion-exchange column purified and shipped in a 2D barcoded Matrix tube containing 10ug of transfection-ready, dried plasmid DNA (reconstitute with 100 ul of water).

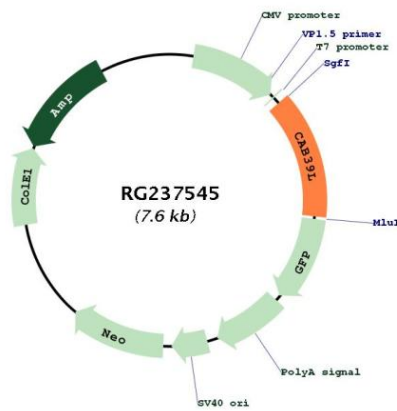
RefSeq: [NM_001287339.1](#), [NP_001274268.1](#)

RefSeq Size: 3382 bp

RefSeq ORF: 1014 bp

Locus ID: 81617
UniProt ID: [Q9H9S4](#)
Cytogenetics: 13q14.2
Protein Pathways: mTOR signaling pathway
MW: 39.2 kDa
Gene Summary: Component of a complex that binds and activates STK11/LKB1. In the complex, required to stabilize the interaction between CAB39/MO25 (CAB39/MO25alpha or CAB39L/MO25beta) and STK11/LKB1 (By similarity).[UniProtKB/Swiss-Prot Function]

Product images:



Circular map for RG237545