

Product datasheet for **RG237540**

CCDC198 (NM_001283056) Human Tagged ORF Clone

Product data:

Product Type:	Expression Plasmids
Product Name:	CCDC198 (NM_001283056) Human Tagged ORF Clone
Tag:	TurboGFP
Symbol:	CCDC198
Synonyms:	C14orf105
Mammalian Cell Selection:	Neomycin
Vector:	pCMV6-AC-GFP (PS100010)
E. coli Selection:	Ampicillin (100 ug/mL)
ORF Nucleotide Sequence:	>RG237540 representing NM_001283056. Blue=ORF Red=Cloning site Green=Tag(s)

```
GCTCGTTTGTAGTGAACCGTCAGAATTTTGTAAACGACTCACTATAGGGCGCCGGGAATTCGTCGACTG
GATCCGGTACCGAGGAGATCTGCCGCCGCGATCGCC
ATGGGCCGTGAGTCACTCTAAGACTCACCTTAGGGTGATCAAAGTAGCACCTTTGCAAAACAAAGAGGTA
GAGACTCCCTCGGCTGGCCGTGTGGACTTTGCATTCAATCAGAATTTGGAAGAAAAGACTTCATATTCA
CTGGCAAGACTGCAGGACCAGAATAAAGCCTTGAAGGGCAGCTGCCACCTTTACAAGAAAAGTGGTAT
GGAAGATATTCTACAGCATCCAGAGACATGTATTTTGACATCCCCTGGAACACAGAGAAACAAGTATT
ATTAAGGCATCCACCCAAAGACTTCAAAGCTTGAACCCATTGACTTGCCACGAGTAATTACTTCA
GGAAGACTCCTGAGCCAGCGAGAAGCCAGGACAATGCACAAAGCAAAGGTAAGAAAAGAAAATGCAA
ACTCCAATGTATACTTCTGAGAACAGACAATATTTGCATAAGATGCAAGTCTGGAAATGATCCGTA
AGACAAGAGGCCCAATGGAGTTAAAGAAAAGTCTTCATGGAGAGGCAAGAAATAAAGCAAAGTCCA
AGGGACCAATAAGCCAAGAAAACCTTCAAAGCACCCCAAGGAATGATGACCATGACCTTCTAACCATG
TTGCTGATGAAATCTTGAACAGAGGTCACGACAGAGTTTCGCTCCTGTTACCCAGGCTGGAGTGAAT
GGCATGATCTCGGCTCACCGAACTTCGCTCCCAAGTTCAAATGATTCTCCTGCCTCAGCCTCCCGA
GTAGCTGGGATTACAGGAAATCAAAGAATACAGAATTTTGAACATCAAGCAGTGAATAACTACTGT
CCCTGGAAAATTTGCAAAATGGAACATGGCTTCATGAACAAGAGGCCAGGGACAGCTTCTCTGGGAC
AGTTCCAGCTCTGACTCAGATGAGCAGGGGAAAGATGAGAAGAGCCACGAGCACTGGTGAGGACCAGG
ACAGAGAGAATCCCACTTTTCGATGAGTTTTTGTCAAGAA
ACGCGTACGCGGCCGCTCGAG - GFP Tag - GTTTAAAC
```



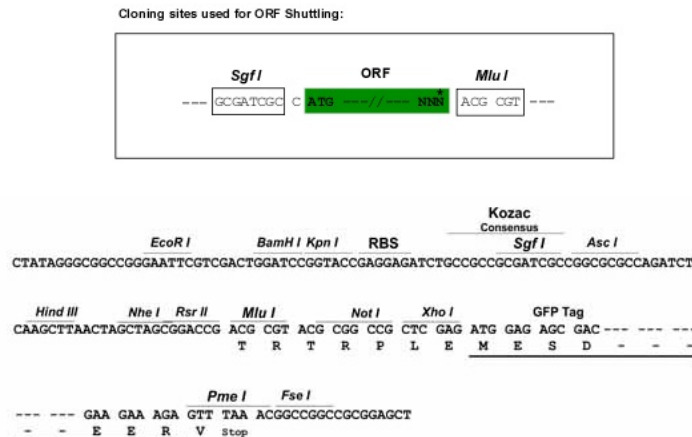
[View online »](#)

Protein Sequence: >Peptide sequence encoded by RG237540
 Blue=ORF Red=Cloning site Green=Tag(s)

MGLSHSKTHLRVIKIVAPLQNKEVETPSAGRVDFAFNQNLEEKTSYSLARLQDQNKALEGQLPPLQENWY
 GRYSTASRDMYFDIPLHRETSIIKRHPPQRLQKLEPIDLPRVITSGRLLSQREARTMHKAKVLEKKMQ
 TPMYTSNRQYLHKMQVLEMIRKRQEAQMELKSLHGEARINKQSPRDHKAKKTLQSTPRNDDHLLTM
 LPDEILNRGPDVRSLLLPRLECNMISAHRKLRLPSSNDSPASASRVAGITGNSKNTFLKHQAVNNYC
 PWKIGKMETWLEHQAQGGQLLWSSSSSDEQKDEKPRALVTRTERIPLFDEFFDQE
TRTRPLEMESDESGLPAMEIECRITGTLNGVEFELVGGGEGTPEQGRMTNKMKSTKGALTFSPYLLSHV
 MGYGFYHFGTYPYSGYENPFLHAINNGGYNTRIEKYEDGGVLHVSFSYRYEAGRVIGDFKVMGTGFPEP
 SVIFTDKIIRSNAIVEHLHPMGDNDLDGSFTRTFSLRDGGYSSVVDSHMHFKSAIHPSILQNGGPMFA
 FRRVEEDHSNTELGIVEYQHAFKTPDADAGEERV

Restriction Sites: SgfI-MluI

Cloning Scheme:



ACCN: NM_001283056

ORF Size: 1008 bp

OTI Disclaimer: The molecular sequence of this clone aligns with the gene accession number as a point of reference only. However, individual transcript sequences of the same gene can differ through naturally occurring variations (e.g. polymorphisms), each with its own valid existence. This clone is substantially in agreement with the reference, but a complete review of all prevailing variants is recommended prior to use. [More info](#)

OTI Annotation: This clone was engineered to express the complete ORF with an expression tag. Expression varies depending on the nature of the gene.

Components: The ORF clone is ion-exchange column purified and shipped in a 2D barcoded Matrix tube containing 10ug of transfection-ready, dried plasmid DNA (reconstitute with 100 ul of water).

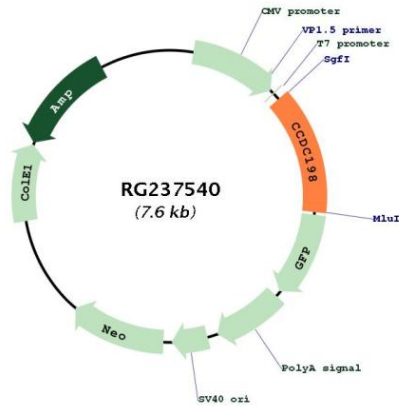
RefSeq: [NM_001283056.2](#)

RefSeq Size: 3214 bp

RefSeq ORF: 1011 bp

Locus ID: 55195
 UniProt ID: [Q9NVL8](#)
 Cytogenetics: 14q22.3
 MW: 39.4 kDa

Product images:



Circular map for RG237540