

Product datasheet for **RG237539**

COX18 (NM_001300729) Human Tagged ORF Clone

Product data:

Product Type:	Expression Plasmids
Product Name:	COX18 (NM_001300729) Human Tagged ORF Clone
Tag:	TurboGFP
Symbol:	COX18
Synonyms:	COX18HS
Mammalian Cell Selection:	Neomycin
Vector:	pCMV6-AC-GFP (PS100010)
E. coli Selection:	Ampicillin (100 ug/mL)
ORF Nucleotide Sequence:	>RG237539 representing NM_001300729. Blue=ORF Red=Cloning site Green=Tag(s)

```
GCTCGTTTGTAGTGAACCGTCAGAATTTTGTAAACGACTCACTATAGGGCGCCGGGAATTCGTCGACTG
GATCCGGTACCGAGGAGATCTGCCGCCCGCATCGCC
ATGCGCTTTATGCCCGCTGTTGCTGGCGCGTGCAGCTATCAGCCTTGGCTGGCCGGTGTATGTCCGCTG
GATTGTGAGGCCCGGGATCTGGGCTCCGCCGTGGTGCAGAAATGCTGTGCCGGCTCGGCCGTCGGTGGC
TGCGGCCGCTCCCTGCCCTGCAGCTTTGGGCTAGGGACCTGCCGCTTGCGCCGTTCTACGAGCGGCG
CCAAGCGCCCACTCTCCAGTGTGGGAGTGGCACCAGTCTCTGCAGTACATGCGAACGGCTGGTACG
AGGCCCTGGCCGCTCTCGCCGGTGGGTTGCGGAGGAAGTACTGCTCGCGTGCACGCCGCCACGG
GCCTGCCCTGGTGGGCAGCATTCTGCTCTCCACCGTGGCCTTACGGGGTGTGTACGCTGCCCTTGG
CAGCCTACCAGCACTACATCCTGGCCAAGGCTCACTTATCTAAAGAATATGAGGAGGCTAATTTAGAG
CTATATGTGCGAGATAACTGCCACCCTTCAAAGCCACTGTGTTGGTTTGGATTAGCTTCCAATGTGG
ATCTTCATGTCTTTTGTCTCCGGAATTTAAGCACGGGGCAGCACATTCAGAAGTTTTTCTGTTCAG
GAACAGTTAGCTACTGGTGAATTTCTGTGGTTTCTGACCTCACTGCACCCGACTCCACTTGGATTCTG
CCTATCTCTGTTGGCGTCATCAATTTGTTAATAGTGGAGATTTGTGCTCTACAAAAAATGGAAATGTCT
CGTTTTTCAGACGTATATTACGACTTTGTCCGTGCAATGTCGGTGTGATGATACCAATTGCTGCAACG
GTACCCCATCAATTGTTCTCTACTGGTTATGCTCCAGCTTCGTGGCCCTTTCACAGAATTTGCTGCTG
CGTTCTCTGGATTTCCCAACTTGGCGAATACCATCGACCAAGTCAGATTCAGAAACTCCTTATAAA
GACATATTTGCTGCCTTTAATACCAAGTTCAATTTCAAGAAAA
ACGCGTACGCGGCCGCTCGAG - GFP Tag - GTTTAAAC
```



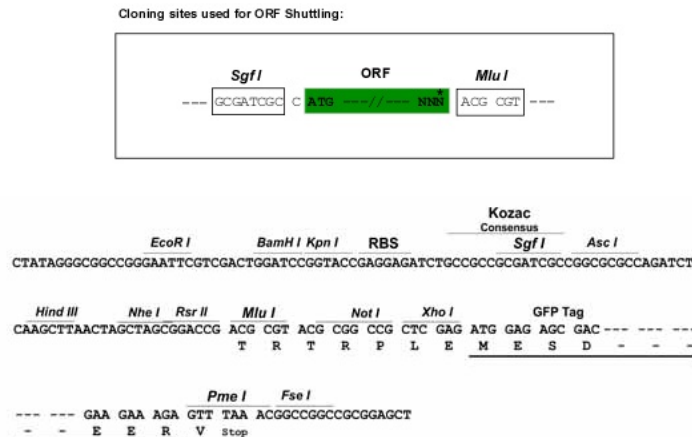
[View online »](#)

Protein Sequence: >Peptide sequence encoded by RG237539
 Blue=ORF Red=Cloning site Green=Tag(s)

MRFMPAVAGACAYQPWLAGVCPLDCEARDLGSVVQKCCAGSAVGGCGRSLPCSFGLGTCRLRRFLRAA
 PSAPLSQCGQWHQSLQYMRTAGTRPWRLRRCGLRRKYCSACTPPRACPGGAFCSPWPYGLSRCLW
 QPTSTTSWPRLTYLKNMRRILISELYVRDNCHPFKATVLVWIQLPMWIFMSFALRNLSTGAHSEGFVQ
 EQLATGGILWFPDLTAPDSTWILPISVGVINLLIVEICALQKIGMSRFQTYITYFVRAMSLMIPAIAT
 VPSSIVLYWLCSSFVGLSQNLLLRSPGFRQLCRIPSTKSDSETPYKDIFAAFNTKFI SRK
 TRTRPLEMESDESGLPAMEIECRITGTLNGVEFELVGGGEGTPEQGRMTNKMSTKGALTFSPYLLSHV
 MGYGFYHFGTYPSTYENPFLHAINNGGYNTRIEKYEDGGVLHVSFSYRYEAGRVIGDFKVMGTGFPEP
 SVIFTDKIIRSNATVEHLHPMGDNDLDGSFTRTFSLRDGGYSSVVDSHMHFKSAIHPSILQNGGPMFA
 FRRVEEDHSNTELGIVEYQHAFKTPDADAGEERV

Restriction Sites: SgfI-MluI

Cloning Scheme:



ACCN: NM_001300729

ORF Size: 1008 bp

OTI Disclaimer: The molecular sequence of this clone aligns with the gene accession number as a point of reference only. However, individual transcript sequences of the same gene can differ through naturally occurring variations (e.g. polymorphisms), each with its own valid existence. This clone is substantially in agreement with the reference, but a complete review of all prevailing variants is recommended prior to use. [More info](#)

OTI Annotation: This clone was engineered to express the complete ORF with an expression tag. Expression varies depending on the nature of the gene.

Components: The ORF clone is ion-exchange column purified and shipped in a 2D barcoded Matrix tube containing 10ug of transfection-ready, dried plasmid DNA (reconstitute with 100 ul of water).

RefSeq: [NM_001300729.1](#), [NP_001287658.1](#)

RefSeq Size: 4429 bp

RefSeq ORF: 1011 bp

Locus ID: 285521

UniProt ID: [Q8N8Q8](#)

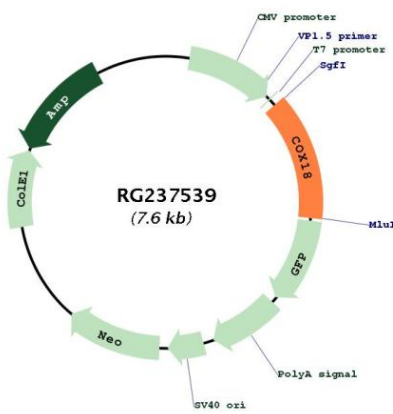
Cytogenetics: 4q13.3

Protein Families: Transmembrane

MW: 37.8 kDa

Gene Summary: This gene encodes a cytochrome c oxidase assembly protein. The encoded protein is essential for integral membrane protein insertion into the mitochondrial inner membrane. It is also required for cytochrome c oxidase assembly and activity. Alternative splicing results in multiple transcript variants. [provided by RefSeq, Jul 2014]

Product images:



Circular map for RG237539