

Product datasheet for **RG237522**

ZNF707 (NM_001288808) Human Tagged ORF Clone

Product data:

Product Type:	Expression Plasmids
Product Name:	ZNF707 (NM_001288808) Human Tagged ORF Clone
Tag:	TurboGFP
Symbol:	ZNF707
Mammalian Cell Selection:	Neomycin
Vector:	pCMV6-AC-GFP (PS100010)
E. coli Selection:	Ampicillin (100 ug/mL)
ORF Nucleotide Sequence:	>RG237522 representing NM_001288808. Blue=ORF Red=Cloning site Green=Tag(s)

```
GCTCGTTTAGTGAACCGTCAGAATTTGTAAACGACTCACTATAGGGCGGCCGGGAATTCGTCGACTG
GATCCGGTACCGAGGAGATCTGCCGCCGCGATCGCC
ATGCTGGACAACCTCAGCAGTGTGGCTGCTCTGGGATTTGCAGCCCCAGACCAGACCTCGTCTCTCGC
CTGGAACAGTGGGAGGAGCCGTGGGTTGAAGACCGGGAGAGACCTGAGTTCAGGCAGTGCAGAGGGGA
CCCCGGCCAGGGGCAAGGAAGTCTGCAGACCCCAAGAGACCTTGTGATCATCCAGCTTGGGCTCACAA
AAAACCCACGTGCGGCGAGAAAGAGCCAGGGAAGGAAGCAGCTTAGGAAGGGCTTCAGGCTGGACACG
GATGACGGGCAGCTTCCAGAGCTGCTCCAGAAAGGACAGACGCCAAGCCACGGCTTCCCGTGTGAG
GTGCTCACGCAGCGTTGTGGGCGGCGGGCCGCGAGAGCGCCGGAAGCAGCGCAGTAGAGCTG
TCATTCATCTGCGGCACGTGCGGGAAGGCCTCAGCTGCCACAGCCGGCTGCTCGCTCACAGACGGTG
CACACGGGAACCAAGGCCTTCGAGTGCCCCGAGTGCGGCCAGACCTTCCGGTGGGCTTCAAACCTGCAG
CGCCACCAGAAGAACCACACGCGCAGAGAAGCCCTTCTGCTGCGAGGCCTGCGGGCAGGCGTTACGCTG
AAGGACCGCCTGGCTCAGCACCGCAAGTCCACACCGAGCACAGGCCCTACTCGTGTGGCGACTGTGGG
AAAGCCTTCAAGCAGAAGTCCAACCTTCTCAGACACCAGCTGGTGCACACCGGGGAGCGGCCGTTTAC
TGCGGGACTGCGGCAAAGCCTCCGGACCAAGGAGAACCTCAGCCACCACCAGAGGGTCCACAGCGGG
GAGAAGCCCTACACCTGTGCCGAGTGCGGCAAGTCTTCCGGTGGCCCAAGGGCTTCAGCATCCACCGG
AGGCTGCACCTGACGAAGAGTTCTACGAGTGCGGCCACTGTGGGAAAGGCTTCCGTACCTGGGTTTC
TTCACGGGCATCAGAGGACTCACAGGCACGGGGAGGTG
ACGCGTACGCGGCCGCTCGAG - GFP Tag - GTTTAAAC
```



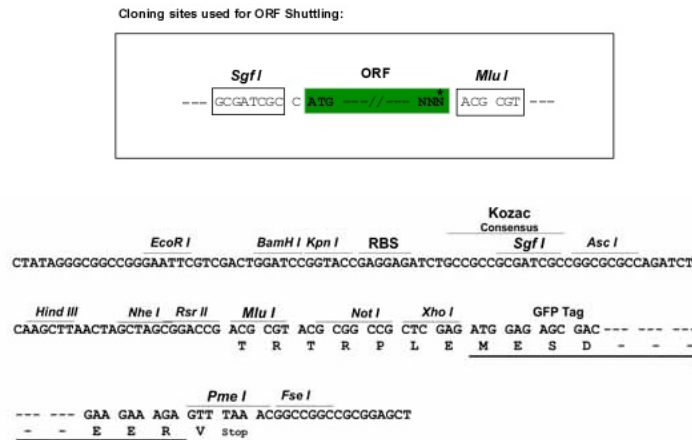
[View online »](#)

Protein Sequence: >Peptide sequence encoded by RG237522
 Blue=ORF Red=Cloning site Green=Tag(s)

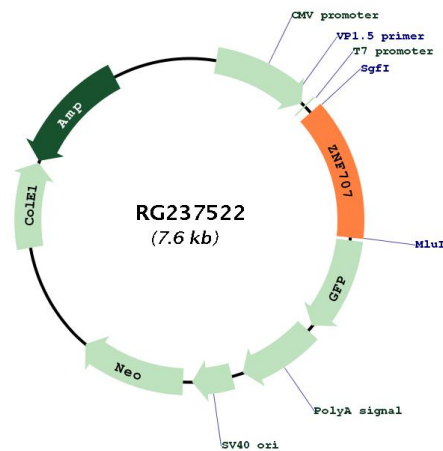
MLDNFSSVAALGFCSRPDLVSRLEQWEEPWVEDRERPEFQAVQRPRPGARKSADPKRPCDHPAWAHK
 KTHVRRERAREGSSFRKGFRLDIDDGQLPRAAPERTDAKPTAFPCQVL TQRCGRPRGRERRKQRAVEL
 SFICGTGCGKALSCHSRLLAHQTVHTGKAFCEPCGQTFRWASNLQRHQKNHTREKPFCEACGQAFSL
 KDRLAQHRKVHTEHRPYS CGDCGKAFKQKSNLLRHQLVHTGERPFYCADCGKAFRTKENLSHHQRVHSG
 EKPYTCAECGKSFWRPKGFSIHRRLHLTKRFYECGHGCGKGFRLGFFTRHQTRHRGCV
 TRTRPLEMESDESGLPAMEIECRITGTLNGVEFELVGGGEGTPEQGRMTNKMSTKGALTFSPYLLSHV
 MGYGFYHFGTYPSTYENPFLHAINNGGYTNTRIEKYEDGGVLHVSFSYRYEAGRVIGDFKVMGTGFPED
 SVIFTDKIIRSNATVEHLHPMGDNDLDGSFTRTFSLRDGGYSSVVD SHMHFKSAIHPSILQNGGPMFA
 FRRVEEDHSNTELGIVEYQHAFKTPDADAGEERV

Restriction Sites: SgfI-MluI

Cloning Scheme:



Plasmid Map:



ACCN:	NM_001288808
ORF Size:	1005 bp
OTI Disclaimer:	The molecular sequence of this clone aligns with the gene accession number as a point of reference only. However, individual transcript sequences of the same gene can differ through naturally occurring variations (e.g. polymorphisms), each with its own valid existence. This clone is substantially in agreement with the reference, but a complete review of all prevailing variants is recommended prior to use. More info
OTI Annotation:	This clone was engineered to express the complete ORF with an expression tag. Expression varies depending on the nature of the gene.
Components:	The ORF clone is ion-exchange column purified and shipped in a 2D barcoded Matrix tube containing 10ug of transfection-ready, dried plasmid DNA (reconstitute with 100 ul of water).
RefSeq:	NM_001288808.2
RefSeq Size:	2063 bp
RefSeq ORF:	1008 bp
Locus ID:	286075
UniProt ID:	Q96C28
Cytogenetics:	8q24.3
Protein Families:	Transcription Factors
MW:	39.2 kDa
Gene Summary:	May be involved in transcriptional regulation.[UniProtKB/Swiss-Prot Function]