

## Product datasheet for **RG237517**

### Lass5 (CERS5) (NM\_001281731) Human Tagged ORF Clone

#### Product data:

Product Type:	Expression Plasmids
Product Name:	Lass5 (CERS5) (NM_001281731) Human Tagged ORF Clone
Tag:	TurboGFP
Symbol:	Lass5
Synonyms:	LASS5; Trh4
Mammalian Cell Selection:	Neomycin
Vector:	pCMV6-AC-GFP (PS100010)
E. coli Selection:	Ampicillin (100 ug/mL)
ORF Nucleotide Sequence:	>RG237517 representing NM_001281731. Blue=ORF Red=Cloning site Green=Tag(s)

```
GCTCGTTTGTAGTGAACCGTCAGAATTTGTAAACGACTCACTATAGGGCGCCGGGAATTCGTCGACTG
GATCCGGTACCGAGGAGATCTGCCGCCGCGATCGCC
ATGATGAAACCAAGACCCAAGAGATTTATTGCCAAACCGTGCCTCTGTATTGGCATCGAGGACAGT
GGTCCTTATCAGGCCCAACCAATGCCATCCTTAAAAGGTGTTTCATATCTATTACCAAGTATCCTGAT
AAGAAAAGGCTGGAGGGCCTGTCAAAGCAGCTGGATTGGAATGCCGAAAAATCCAATGCTGTTTCGC
CATCGGAGGAATCAGGACAAGCCCCAACGCTTACTAAATCTGTGAAAGCATGTGGAGATTCACATTT
TATTTATGTATTTCTGCTATGGAATTAGATTTCTCTGGTCGTCACCTTGGTCTGGGACATCCGACAG
TGCTGGCATAACTATCCATTTTCAGCCTTTCAAGTGGGCTTTATCACTATTATATCATGGAATTGGCC
TTCTATTGGTCCCTTATGTTTTCTCAGTTTACAGACATTAAGAAAGGACTTCCGATCATGTTTGTG
CATCACTTGGTCAACATTGGGCTTATCTCCTTCTCCTACATCAACAATATGGTTCGAGTGGGAACCTG
ATCATGTGTCTACATGATGTCTCAGACTTCTTGTCTGGAGGCAGCCAACTGGCCAATTATGCCAAGTAT
CAGCGGCTCTGTGACACCCTTTTTGTGATCTTCAGTGTGTTTTATGGTTACACGACTAGGAATCTAT
CCATTCTGGATTCTGAACACGACCCTCTTTGAGAGTTGGGAGATAATCGGGCCTTATGCTTCATGGTGG
CTCCTCAATGGCCTGCTGCTGACCCTACAGCTTCTGCATGTCATCTGGTCTACCTAATTGCACGGATT
GCTTTGAAAGCCTTGATCAGGGGAAAGGTATCGAAGGATGATCGCAGTGTGGAGAGCAGCTCAGAG
GAAGAAGATGTGACCACCTGCACAAAAAGTCCCTGTGACAGTAGCTCCAGCAATGGTCCCAATCGGGTG
AATGGTACATGGGAGGCAGCTACTGGGCTGAAGAG
ACGCGTACGCGGCCGCTCGAG - GFP Tag - GTTTAAAC
```



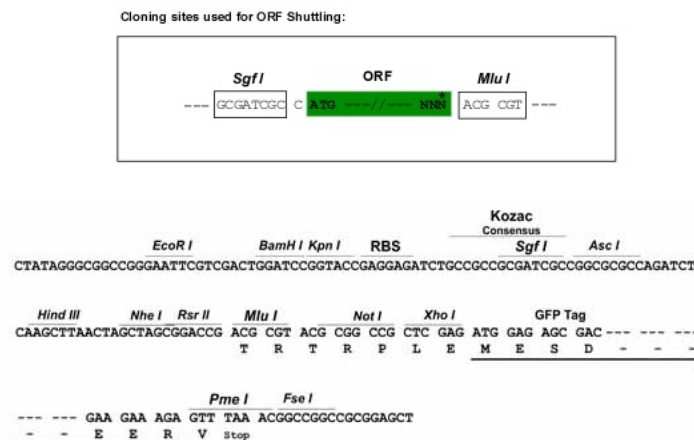
[View online »](#)

**Protein Sequence:** >Peptide sequence encoded by RG237517  
 Blue=ORF Red=Cloning site Green=Tag(s)

MMKPRPKRFIAKPCALCIGIEDSGPYQAQPNAILKVFISITKYPDKKRLEGLSKQLDWNVRKIQCWFR  
 HRRNQDKPPTLTKFCESMWRFTFYLCIFCYGIRFLWSSPWFWDIRQCWHNYPFQPLSSGLYHYIMELA  
 FYWSLMFSQFTDIKRKDFLIMFVHHLVTIGLISFSYINNMVRVGTIMCLHDVDFLLEAAKLANYAKY  
 QRLCDTLFVIFSAVFMVTRLGIYPFWILNTTLFESWEIIGPYASWLLNGLLLTLQLLHVIWSYLIARI  
 ALKALIRGKVSDDRSDVESSEEDVTTCTKSPCDSSSSNGANRVNGHMGGSYWAE  
**TRTRPLEMESDESGLPAMEIECRITGTLNGVEFELVGGGEGTPEQGRMTNKMSTKGALTFSPYLLSHV**  
 MGYGFYHFGTYPSTYENPFLHAINNGGYNTRIEKYEDGGVLHVSFSYRYEAGRVIGDFKVMGTGFPEP  
 SVIFTDKIIRSNATVEHLHPMGDNDLDGSFTRTFSLRDGGYSSVVDSHMHFKSAIHPSILQNGGPMFA  
 FRRVEEDHSNTELGIVEYQHAFKTPDADAGEERV

**Restriction Sites:** SgfI-MluI

**Cloning Scheme:**



**ACCN:** NM\_001281731

**ORF Size:** 1002 bp

**OTI Disclaimer:** The molecular sequence of this clone aligns with the gene accession number as a point of reference only. However, individual transcript sequences of the same gene can differ through naturally occurring variations (e.g. polymorphisms), each with its own valid existence. This clone is substantially in agreement with the reference, but a complete review of all prevailing variants is recommended prior to use. [More info](#)

**OTI Annotation:** This clone was engineered to express the complete ORF with an expression tag. Expression varies depending on the nature of the gene.

**Components:** The ORF clone is ion-exchange column purified and shipped in a 2D barcoded Matrix tube containing 10ug of transfection-ready, dried plasmid DNA (reconstitute with 100 ul of water).

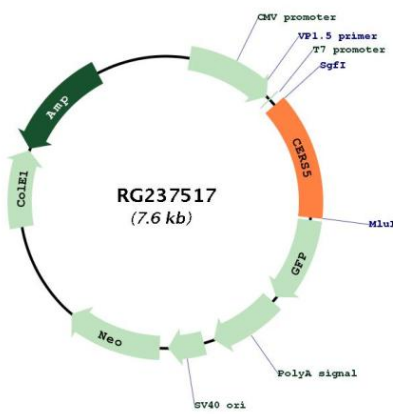
**RefSeq:** [NM\\_001281731.1](#), [NP\\_001268660.1](#)

**RefSeq Size:** 2855 bp

**RefSeq ORF:** 1005 bp

**Locus ID:** 91012  
**UniProt ID:** [Q8N5B7](#)  
**Cytogenetics:** 12q13.12  
**Protein Families:** Transcription Factors, Transmembrane  
**MW:** 39.7 kDa  
**Gene Summary:** This gene encodes a protein that belongs to the TLC (TRAM, LAG1 and CLN8 homology domains) family of proteins. The encoded protein functions in the synthesis of ceramide, a lipid molecule that is involved in a several cellular signaling pathways. Alternate splicing results in multiple transcript variants. [provided by RefSeq, Aug 2013]

**Product images:**



Circular map for RG237517