

Product datasheet for **RG237516**

HSD11B1L (NM_001267868) Human Tagged ORF Clone

Product data:

Product Type:	Expression Plasmids
Product Name:	HSD11B1L (NM_001267868) Human Tagged ORF Clone
Tag:	TurboGFP
Symbol:	HSD11B1L
Synonyms:	11-beta-HSD3; 11-DH3; HSD1L; HSD3; SCDR10; SCDR10B; SDR26C2
Mammalian Cell Selection:	Neomycin
Vector:	pCMV6-AC-GFP (PS100010)
E. coli Selection:	Ampicillin (100 ug/mL)
ORF Nucleotide Sequence:	>RG237516 representing NM_001267868. Blue=ORF Red=Cloning site Green=Tag(s)

```
GCTCGTTT TAGTGAACCGTCAGAATTTTGT AATACGACTCACTATAGGGCGGCCGGGAATTCGTCGACTG
GATCCGGTACCGAGGAGATCTGCCGCC GCGATCGCC
ATGGCAAATCTCGGCACACTACAACTTCTGCCTCCCAGGTTCAAGCGATTCTCCTGCCTCAGCCTCCCA
AATATCTGGATTACAGGCATGCCTGTGCCGGCCACCTCTGTCCCCTGTCCCTCTGCAGGCCACACAGG
ACCATGAAGGTGCTTCTCCTCACAGGGCTGGGGGCCCTGTTCTTCGCCTATTATTGGGATGACAACCTC
GACCCAGCCAGCCTCCAGGGAGCGGAGTGCTGCTGACAGGGGCCAACGCTGGTGTGGTGAGGAGCTG
GCCTATCACTACGCGCTCTGGGCTCCACCTGGTGTCTACTGCCACACTGAGGCTCTCCTGCAGAAG
GTGGTAGGGAAGTGCCGGAAGCTGGGCGCCCCAAGGTCTTCTACATCGCGCGGACATGGCCTCCCT
GAGGCGCCCCGAGAGCGTGGTGCAGTTTGCCTGGACAAGCTGGGCGGGCTGGACTACCTCGTGTGAAC
CACATCGGCGGCCGCCCGGCCGGCACGCGAGCCCCGAGCCCCAGGCAACTCGCTGGCTCATGCAGGTA
AACTTTGTGAGCTACGTGCAACTGACGTGCGGGCGCTGCCAGCCTGACGGACAGCAAGGGCTCCCTG
GTGGTGGTGTCTCGTGTCTCGGCCGCTGCCACGTCGTTCTCCACTCCCTACTCGGCGGCCAAGTTT
GCGCTGGACGGCTTCTTCGGCTCCCTGCGGCGGGAGCTGGACGTGACGAGCAGTGAACGTGGCCATCACC
ATGTGCGTCTGGGCTCCGAGATCGCGCTCCGCCGCGAGGAGTCAAGGGAGTCAAGGGGTCAAG
GCGGCCCCGGGGCCCAAGGCAGCCCTGGCCGTGATCCGCGGCGGCCACGCGCGGCCGCGGCGTCTTC
TACCCGTGGCGTTTCCGCTGTGCTTGTCTCGGCGCTGGCTACCGCGCCCGGGCCCTGGTTTATC
CGCCAGGAGCTCAACGTACGGCCCGGCGAGCC
ACGCGTACGCGGCCGCTCGAG - GFP Tag - GTTAAAC
```



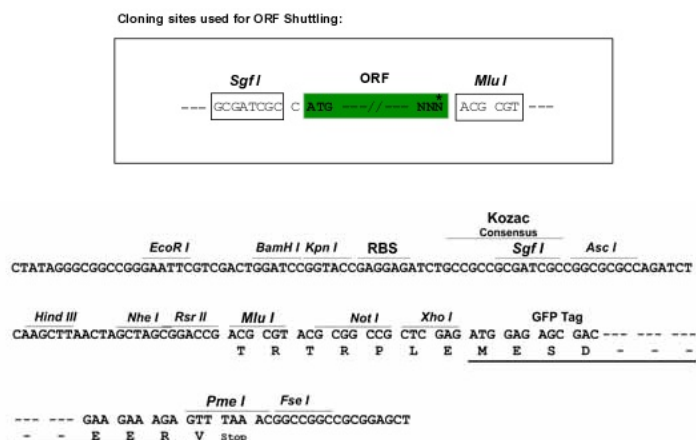
[View online »](#)

Protein Sequence: >Peptide sequence encoded by RG237516
 Blue=ORF Red=Cloning site Green=Tag(s)

MANLGTLLQLPPRFKRFSCLSLPNIWITGMPVPATSVPCPSAGPHRTMKVLLL TGLGALFFAYYWDDNF
 DPASLQGARVLLTGANAGVGEELAYHYARLGSHLVLTAHTEALLQKVVGNCRKLGAPKVFYAADMASP
 EAPESVVQFALDKLGGLDYLVLNHIGGAPAGTRARSPQATRWMQVNFVSYVQLTSRALPSLTDSKGS
 VVYSSLLGRVPTSFSTPYSAAKFALDGFGLRREL DVQDVNVAITMCVLGLDRASAAEA VRGVTRVK
 AAPGPKAALAVIRGGATRAAGVFPWRFRLLCLLRRWLP RPRAWFIRQELNVTAAAA
 TRTRPLEMESDESGLPAMEIECRITGTLNGVEFELVGGGEGTPEQGRMTNKMKSTKGALTFSPYLLSHV
 MGYGFYHFGTYPSTYENPFLHAINNGGYTNTRIEKYEDGGVLHVSFSYRYEAGRVIGDFKVMGTGFPE
 SVIFTDKIIRS NATVEHLHPMGDNDLDGSFTRTFLRDGGYSSVVD SHMHFKSAIHP SILQNGGPMFA
 FRRVEEDHSNTELGIVEYQHAFKTPDADAGEERV

Restriction Sites: SgfI-MluI

Cloning Scheme:



ACCN: NM_001267868

ORF Size: 999 bp

OTI Disclaimer: The molecular sequence of this clone aligns with the gene accession number as a point of reference only. However, individual transcript sequences of the same gene can differ through naturally occurring variations (e.g. polymorphisms), each with its own valid existence. This clone is substantially in agreement with the reference, but a complete review of all prevailing variants is recommended prior to use. [More info](#)

OTI Annotation: This clone was engineered to express the complete ORF with an expression tag. Expression varies depending on the nature of the gene.

Components: The ORF clone is ion-exchange column purified and shipped in a 2D barcoded Matrix tube containing 10ug of transfection-ready, dried plasmid DNA (reconstitute with 100 ul of water).

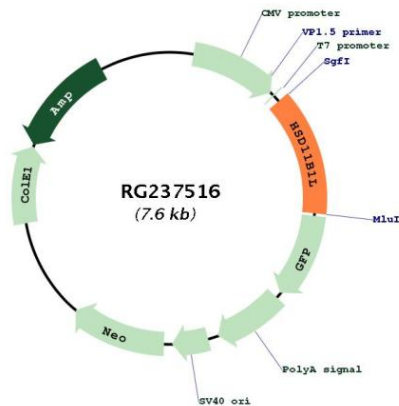
RefSeq: [NM_001267868.2](#)

RefSeq Size: 2098 bp

RefSeq ORF: 1002 bp

Locus ID: 374875
Cytogenetics: 19p13.3
Protein Families: Druggable Genome
MW: 36.4 kDa
Gene Summary: This gene is a member of the hydroxysteroid dehydrogenase family. The encoded protein is similar to an enzyme that catalyzes the interconversion of inactive to active glucocorticoids (e.g. cortisone). Alternatively spliced transcript variants encoding multiple isoforms have been observed for this gene. [provided by RefSeq, Jun 2012]

Product images:



Circular map for RG237516