

## Product datasheet for **RG237462**

### STK33 (NM\_001289059) Human Tagged ORF Clone

#### Product data:

Product Type:	Expression Plasmids
Product Name:	STK33 (NM_001289059) Human Tagged ORF Clone
Tag:	TurboGFP
Symbol:	STK33
Mammalian Cell Selection:	Neomycin
Vector:	pCMV6-AC-GFP (PS100010)
E. coli Selection:	Ampicillin (100 ug/mL)
ORF Nucleotide Sequence:	>RG237462 representing NM_001289059. Blue=ORF Red=Cloning site Green=Tag(s)

```
GCTCGTTTAGTGAACCGTCAGAATTTTGTAAACGACTCACTATAGGGCGGCCGGGAATTCGTCGACTG
GATCCGGTACCGAGGAGATCTGCCGCCGCGATCGCC
ATGTACCTTGTGATGGAGCTTTGTGAGGATGGAGAACTCAAAGAAATCTGGATAGGAAAGGGCATTTC
TCAGAGAAATGAGACAAGGTGGATCATTCAAAGTCTCGCATCAGCTATAGCATATCTTCACAATAATGAT
ATTGTACATAGAGATCTGAAACTGGAAAATAAATGGTTAAAAGCAGTCTTATTGATGATAACAATGAA
ATAAACTTAAACATAAAGGTGACTGATTTTGGCTTAGCGGTGAAGAAGCAAAGTAGGAGTGAAGCCATG
CTGCAGGCCACATGTGGGACTCCTATCTATATGGCCCCGAAGTTATCAGTGCCACGACTATAGCCAG
CAGTGTGACATTTGGAGCATAGCGCTCGTAATGTACATGTTATTACGTGGAGAACCACCTTTTTGGCA
AGCTCAGAAGAGAAGCTTTTTGAGTTAATAAGAAAAGGAGAACTACATTTGAAAATGCAGTCTGGAAT
TCCATAAGTGACTGTGCTAAAAGTGTGTTTGAACAACCTTATGAAAGTAGATCCTGCTCACAGAATCACA
GCTAAGGAACTACTAGATAAACCAGTGGTTAACAGGCAATAAACTTTCTTCGGTGAGACCAACCAATGTA
TTAGAGATGATGAAGGAATGGAAAAATAACCCAGAAAGTGTGAGGAAAACACAACAGAAGAGAAGAAAT
AAGCCGTCCACTGAAGAAAAGTTGAAAAGTTACCAACCTGGGAAATGTCCCTGATGCCAATTACACT
TCAGATGAAGAGGAGGAAAAACAGTCTACTGCTTATGAAAAGCAATTTCTGCAACCGTAAAGGACAAC
TTTGATATGTGCAGTTCAAGTTTCACATCTAGCAAACCTTCCAGCTGAAATCAAGGGAGAAATGGAG
AAAACCCCTGTGACTCCAAGCCAAGGAACAGCAACCAAGTACCCTGCTAAATCCGGCGCCCTGTCCAGA
ACCAAAAAGAAACTC
ACGCGTACGCGGCCGCTCGAG - GFP Tag - GTTTAAAC
```



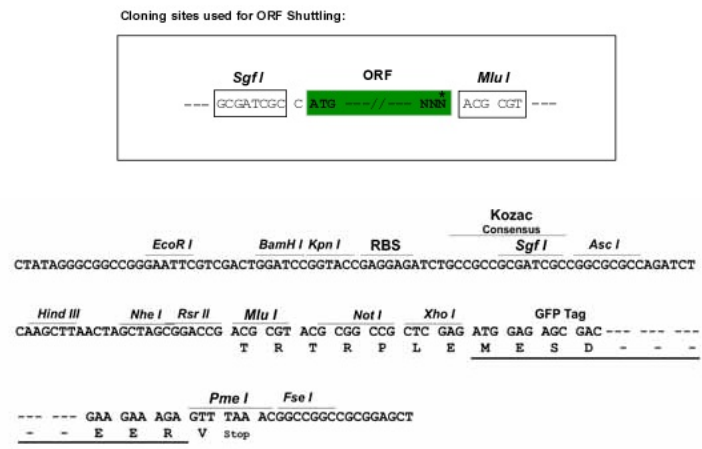
[View online »](#)

**Protein Sequence:** >Peptide sequence encoded by RG237462  
 Blue=ORF Red=Cloning site Green=Tag(s)

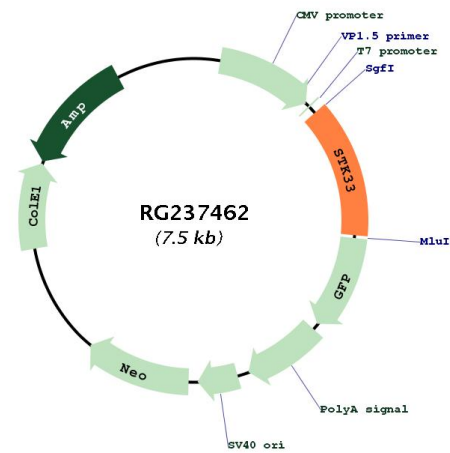
MYLVMELCEDGELKEILDRKGHFSENETRWIIQSLASAIAYLHNNDIVHRDLKLENIMVKSSLIDDNNE  
 INLNIKVTDVDFGLAVKKQSRSEAMLQATCGTPIYMAPEVISAHDYSQDCDIWSIGVVMYLLRGEPPFLA  
 SSEEKL FELIRKELHFENAVWNSISDCAKSVLKQLMKVDPAHRITAKELLDNQWLTGNKLSVVRPTNV  
 LEMMKWKNPESVEENTTEEKKNPSTEEKLSYQPWGNVPDANYTSDEEEEKQSTAYEKQFPATSKDN  
 FDMCSSSFTSSKLLPAEIKGEMEKTPVTPSQGTATKYPKASGALSRTKKKL  
 TRTRPLEMESDESGLPAMEIECRITGTLNGVEFELVGGGEGTPEQGRMTNKMKSTKGALTFSPYLLSHV  
 MGYGFYHFGTYPSTYENPFLHAINNGGYNTRIEKYEDGGVLHVSFSYRYEAGRVIGDFKVMGTGFPED  
 SVIFTDKIIRSNATVEHLHPMGDNDLDGSFTRTFSLRDGGYSSVVD SHMHFKSAIHPSILQNGGPMFA  
 FRRVEEDHSNTELGIVEYQHAFKTPDADAGEERV

**Restriction Sites:** SgfI-MluI

**Cloning Scheme:**



**Plasmid Map:**



<b>ACCN:</b>	NM_001289059
<b>ORF Size:</b>	981 bp
<b>OTI Disclaimer:</b>	The molecular sequence of this clone aligns with the gene accession number as a point of reference only. However, individual transcript sequences of the same gene can differ through naturally occurring variations (e.g. polymorphisms), each with its own valid existence. This clone is substantially in agreement with the reference, but a complete review of all prevailing variants is recommended prior to use. <a href="#">More info</a>
<b>OTI Annotation:</b>	This clone was engineered to express the complete ORF with an expression tag. Expression varies depending on the nature of the gene.
<b>Components:</b>	The ORF clone is ion-exchange column purified and shipped in a 2D barcoded Matrix tube containing 10ug of transfection-ready, dried plasmid DNA (reconstitute with 100 ul of water).
<b>RefSeq:</b>	<a href="#">NM_001289059.2</a>
<b>RefSeq Size:</b>	2057 bp
<b>RefSeq ORF:</b>	984 bp
<b>Locus ID:</b>	65975
<b>UniProt ID:</b>	<a href="#">Q9BYT3</a>
<b>Cytogenetics:</b>	11p15.4
<b>Protein Families:</b>	Druggable Genome, Protein Kinase
<b>MW:</b>	37.5 kDa
<b>Gene Summary:</b>	Serine/threonine protein kinase which phosphorylates VIME. May play a specific role in the dynamic behavior of the intermediate filament cytoskeleton by phosphorylation of VIME (By similarity). Not essential for the survival of KRAS-dependent AML cell lines.[UniProtKB/Swiss-Prot Function]