

Product datasheet for **RG237441**

C11orf49 (NM_001278222) Human Tagged ORF Clone

Product data:

Product Type:	Expression Plasmids
Product Name:	C11orf49 (NM_001278222) Human Tagged ORF Clone
Tag:	TurboGFP
Symbol:	C11orf49
Mammalian Cell Selection:	Neomycin
Vector:	pCMV6-AC-GFP (PS100010)
E. coli Selection:	Ampicillin (100 ug/mL)
ORF Nucleotide Sequence:	>RG237441 representing NM_001278222. Blue=ORF Red=Cloning site Green=Tag(s)

```
GCTCGTTTAGTGAACCGTCAGAATTTTGTAAACGACTCACTATAGGGCGGCCGGGAATTCGTCGACTG
GATCCGGTACCGAGGAGATCTGCCGCCCGCATCGCC
ATGGCAACGGAGAGAGACGGCAACCTGGGTTCCGGAAGCCGGAGAGCTGGAGCTTTGAAGCCACCCCGG
TCAAAGGATGCTGAGTCCGGAGCGCCTAGCCCTACCGACTACGAGTATCTGGTTTTAACAGTGTATGC
CAGGGAACACACATTCTCTTTTCGAGAATTCAGCTTCGTCCAAGCCACCCCAATAGGGTATCATT
TTACGGGCCTTCTGGAGATGCTCCGAAGTGTGGGCAAAAATGGCGATTTGCTGACCATGAAAGAATAT
CACTGTTTGTGCAATTACTGTGTCTGATTTCCCGCTGGAGCTCACTCAGAAAGCAGCCAGGATTTGT
CTCATGGACGATGCCATGGACTGCTTGATGTCTTTTTCAGATTTCTCTTTGCCTCCAGATCCAGTTT
TACTACTCAGAATTCCTGGACAGTGTGGCTGCCATCTATGAGGACCTGCTGTGAGGCAAGAACCCCAAC
ACAGTGATTGTGCCGACGTCGTCCAGTGGGCGAGCACCGCAACGACCTGCCTTGGCGGGGCCGGCACG
CTGGAGGGCGTGGAGGCGTCTGTTTCTACAGTGTCTGGAAAACCTGTGTGATCGGCACAAAGTACAGC
TGCCCAACCCAGCACTTGTCAAAGAGGCCCTCAGCAATGTTTCAGAGACTGACCTTCTATGGATTCTC
ATGGCTCTCTCAAAGCACCGTGAATCAACCAAGCCCTCGGAGCTTTGCCTGACAAGGGGGATCTGATG
CACGACCCAGCAATGGATGAAGAGCTGGAACGGCTGCTGGCCAGGTCAGGCTCCAGGCTGGTCAACTCGGTC
ACAGCCAGTCCAGAGGCCAGTTGCCTTCCCGGACCCCTCCCGGGTTGGCTCTCCCTGGAGACCT
CTCCATCATTCCCGAAAAGTGGATGGAGAGAGTATGGCTCCACTGAAGAGACAGACGAGTCGGAGACT
ACGCGTACGCGGCCGCTCGAG - GFP Tag - GTTTAAAC
```



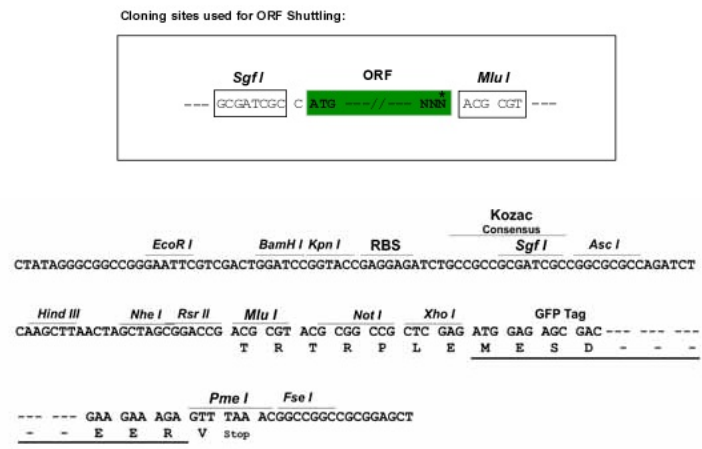
[View online »](#)

Protein Sequence: >Peptide sequence encoded by RG237441
 Blue=ORF Red=Cloning site Green=Tag(s)

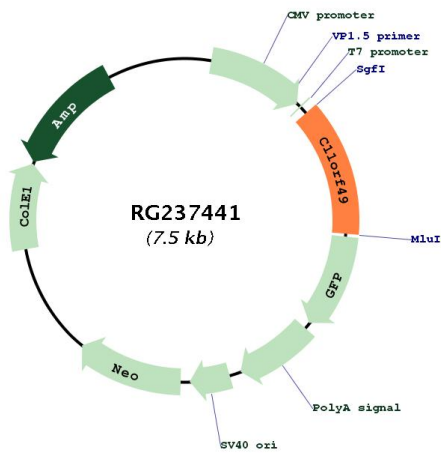
MATERDGNLGGSSRRAGALKPPRSKDAESGAPSPTGLRVSGFNVCQGTHILFREFSFVQATPHNRVSL
 LRAFWRCFRTVGKNGDLLTMKEYHCLLQLLCPDFLELTQKAARIVLMDDAMDCLMSFSDFLFAFQIQF
 YYSEFLDSVAAYEDLLSGKNPNTVIVPTSSSQHRQRPALGGAGTLEGVASLFFQCLLENLCDRHKYS
 CPPPALVKEALSNVQRLTFYGLMALSKHRGINQALGALPDKGDLMDHPAMDEELERLLAQVPLVNSV
 TASPEASCLPSRTPPRVGSPWRPLHHSRKVDGESDGSSTEETDESET
TRTRPLEMESDESGLPAMEIECRITGTLNGVEFELVGGGEGTPEQGRMTNKMSTKGALTFSPYLLSHV
 MGYGFYHFGTYPSTYENPFLHAINNGGYTNTRIEKYEDGGVLHVSFSYRYEAGRVIGDFKVMGTGFPED
 SVIFTDKIIRSNAIVEHLHPMGDNDLDGSFTRTFSLRDGGYSSVVDSHMHFKSAIHPSILQNGGPMFA
 FRRVEEDHSNTELGIVEYQHAFKTPDADAGEERV

Restriction Sites: SgfI-MluI

Cloning Scheme:



Plasmid Map:



ACCN:	NM_001278222
ORF Size:	966 bp
OTI Disclaimer:	The molecular sequence of this clone aligns with the gene accession number as a point of reference only. However, individual transcript sequences of the same gene can differ through naturally occurring variations (e.g. polymorphisms), each with its own valid existence. This clone is substantially in agreement with the reference, but a complete review of all prevailing variants is recommended prior to use. More info
OTI Annotation:	This clone was engineered to express the complete ORF with an expression tag. Expression varies depending on the nature of the gene.
Components:	The ORF clone is ion-exchange column purified and shipped in a 2D barcoded Matrix tube containing 10ug of transfection-ready, dried plasmid DNA (reconstitute with 100 ul of water).
RefSeq:	NM_001278222.1 , NP_001265151.1
RefSeq Size:	1619 bp
RefSeq ORF:	969 bp
Locus ID:	79096
Cytogenetics:	11p11.2
MW:	35.9 kDa