

Product datasheet for **RG237434**

MYADM (NM_001290189) Human Tagged ORF Clone

Product data:

Product Type:	Expression Plasmids
Product Name:	MYADM (NM_001290189) Human Tagged ORF Clone
Tag:	TurboGFP
Symbol:	MYADM
Synonyms:	SB135
Mammalian Cell Selection:	Neomycin
Vector:	pCMV6-AC-GFP (PS100010)
E. coli Selection:	Ampicillin (100 ug/mL)
ORF Nucleotide Sequence:	>RG237434 representing NM_001290189. Blue=ORF Red=Cloning site Green=Tag(s)

GCTCGTTTAGTGAACCGTCAGAATTTTGTAAACGACTCACTATAGGGCGGCCGGGAATTCGTCGACTG
GATCCGGTACCGAGGAGATCTGCCGCC**CGCATCGCC**
ATGCCAGTGACGGTAACCCGCACCAACCATCACAAACACGACGTCATCTTCGGGCCTGGGGTCCCCC
ATGATCGTGGGGTCCCCTCGGGCCCTGACACAGCCCTGGGTCTCCTTCGCCTGCTGCAGCTGGTGTCT
ACCTGCGTGGCCTTCTCGCTGGTGGCTAGCGTGGGCGCCTGGACGGGTCCATGGCAACTGGTCCATG
TTCACCTGGTGTCTCTGCTTCTCCGTGACCTGATCATCCTCATCGTGGAGCTGTGCGGGCTCCAGGCC
CGCTTCCCCCTGTCTTGGCGCAACTTCCCCATCACCTTCGCCTGCTATGCGGCCCTTCTGCTCTCG
GCCTCCATCATCTACCCACCACTATGTCCAGTTCTGTCCACGGCCGTTTCGGGGACCAACGCCATC
GCCGCCACCTTCTTCTCCTGCATCGCGTGTGTGGCTTACGCCACCGAAGTGGCCTGGACCCGGGCCCGG
CCCGGCGAGATCACTGGCTATATGGCCACCGTACCCGGGCTGCTGAAGGTGCTGGAGACCTTCGTTGCC
TGCATCATCTTCGCGTTCATCAGCGACCCCAACCTGTACCAGCACCAGCCTGCCCTGGAGTGGTGGCTG
GCGGTGTACGCCATCTGCTTCATCCTAGCGGCCATCGCCATCCTGCTGAACCTGGGGAGTGCACCAAC
GTGCTACCCATCCCCTTCCCCAGCTTCTGTGGGGCTGGCCTTGTCTGTCTCTCTATGCCACC
GCCCTTGTCTCTGGCCCTCTACCAAGTTCGATGAGAAGTATGGCGGCCAGCCTCGGCGCTCGAGAGAT
GTAAGCTGCAGCCGACCCATGCCTACTACGTGTGTGCCTGGGACCGCCGACTGGCTGTGGCCATCCTG
ACGGCCATCAACCTACTGGCGTATGTGGTGACCTGGTGCACCTGCCCCACCTGGTTTTTGTCAAGGTC
ACCGCTACGCGGCCGCTCGAG - GFP Tag - GTTTAAAC



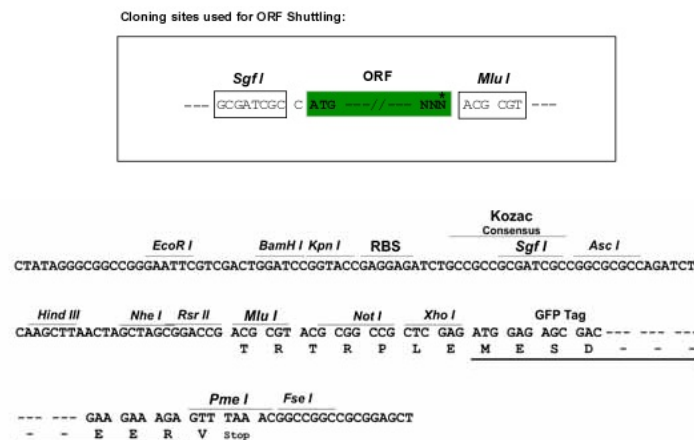
[View online »](#)

Protein Sequence: >Peptide sequence encoded by RG237434
Blue=ORF Red=Cloning site Green=Tag(s)

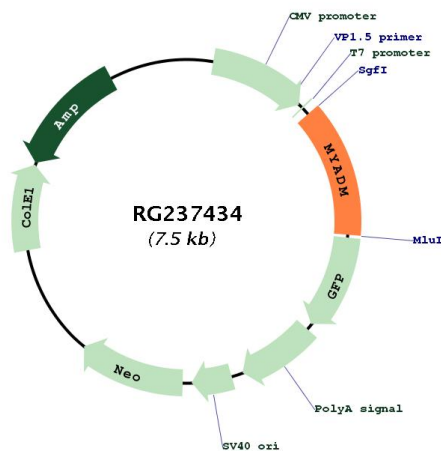
MPVTVTRTTITTTTTSSSGLGSPMIVGSPRALTQPLGLLRLLQLVSTCVAFSLVASVGAWTGMGNWSM
FTWCFCSVTLLIILIVELCGLQARFPLSWRNFPITFACYAALFCLSASIIYPTTYVQFLSHGRSRDHAI
AATFFSCIACVAYATEVAWTRARPGEITGYMATVPGLLKVLETFVACIIFAFISDPNLYQHQALEWCV
AVYAICFILAAIAILLNLGECTNVLPIPFPSFLSGLALLSVLLYATALVLWPLYQFDEKYGGQPRRSRD
VSCSRSHAYYVCAWDRRLAVAILTAINLLAYVADLVHSAHLVFKV
TRTRPLEMESDESGLPAMEIECRITGTLNGVEFELVGGEGTPEQGRMTNKMKSTKGALTFSPYLLSHV
MGYGFYHFGTYPSTYENPFLHAINNGGYTNTRIEKYEDGGVLHVSFSYRYEAGRVIGDFKVMGTGFPED
SVIFTDKIIRSNTAVEHLHPMGDNDLGSFTRTFSLRDGGYSSVVDSTMHFKSAIHPSILQNGGPMFA
FRRVEEDHSNTELGIVEYQHAFKTPDADAGEERV

Restriction Sites: SgfI-MluI

Cloning Scheme:



Plasmid Map:



ACCN: NM_001290189

ORF Size:	966 bp
OTI Disclaimer:	The molecular sequence of this clone aligns with the gene accession number as a point of reference only. However, individual transcript sequences of the same gene can differ through naturally occurring variations (e.g. polymorphisms), each with its own valid existence. This clone is substantially in agreement with the reference, but a complete review of all prevailing variants is recommended prior to use. More info
OTI Annotation:	This clone was engineered to express the complete ORF with an expression tag. Expression varies depending on the nature of the gene.
Components:	The ORF clone is ion-exchange column purified and shipped in a 2D barcoded Matrix tube containing 10ug of transfection-ready, dried plasmid DNA (reconstitute with 100 ul of water).
RefSeq:	NM_001290189.1 , NP_001277118.1
RefSeq Size:	3610 bp
RefSeq ORF:	969 bp
Locus ID:	91663
UniProt ID:	Q96S97
Cytogenetics:	19q13.42
Protein Families:	Transmembrane
MW:	35.3 kDa