

Product datasheet for **RG237386**

MAGEA2 (NM_001282504) Human Tagged ORF Clone

Product data:

Product Type:	Expression Plasmids
Product Name:	MAGEA2 (NM_001282504) Human Tagged ORF Clone
Tag:	TurboGFP
Symbol:	MAGEA2
Synonyms:	CT1.2; MAGE2; MAGEA2A
Mammalian Cell Selection:	Neomycin
Vector:	pCMV6-AC-GFP (PS100010)
E. coli Selection:	Ampicillin (100 ug/mL)
ORF Nucleotide Sequence:	>RG237386 representing NM_001282504. Blue=ORF Red=Cloning site Green=Tag(s)

```
GCTCGTTTGTAGTGAACCGTCAGAATTTTGTAAATACGACTCACTATAGGGCGCCGGGAATTCGTCGACTG
GATCCGGTACCGAGGAGATCTGCCGCCGCGATCGCC
ATGCCTTTGAGCAGAGGAGTCAGCACTGCAAGCCTGAAGAAGGCCTTGAGGCCGAGGAGAGGCCCTG
GGCCTGGTGGGTGCGCAGGCTCCTGCTACTGAGGAGCAGCAGACCGCTTCTTCTCTTCTACTCTAGTG
GAAGTTACCTGGGGGAGGTGCTGCTGCCGACTCACCGAGTCTCCACAGTCCTCAGGGAGCCTCC
AGCTTCTCGACTACCATCAACTACTCTTTGGAGACAATCCGATGAGGGCTCCAGCAACCAAGAAGAG
GAGGGCCAAGAATGTTCCCGACTGGAGTCCGAGTTCCAAGCAGCAATCAGTAGGAAGATGGTTGAG
TTGGTTCAATTTCTGCTCCTCAAGTATCAAGCCAGGGAGCCGGTCACAAAGGCAGAAATGCTGGAGAGT
GTCCTCAGAAATTGCCAGGACTTCTTCCCGTGATCTTACGAAAGCCTCCGAGTACTTGCAGCTGGTC
TTTGGCATCGAGGTGGTGAAGTGGTCCCCATCAGCCACTTGTACATCCTTGTACCTGCCTGGGCCTC
TCCTACGATGGCCTGCTGGGCGACAATCAGGTCATGCCCAAGACAGGCCTCCTGATAATCGTCTGGCC
ATAATCGCAATAGAGGGCGACTGTGCCCTGAGGAGAAAATCTGGGAGGAGCTGAGTATGTTGGAGGTG
TTGAGGGGAGGGAGGACAGTGTCTTCGCACATCCCAGGAAGCTGCTCATGCAAGATCTGGTGCAGGAA
AACTACCTGGAGTACCGGCAGGTGCCGGCAGTGATCCTGCATGCTACGAGTTCCTGTGGGTCCAAGG
GCCCTCATTGAAACCAGCTATGTGAAAGTCCCTGCACCATACACTAAAGATCGGTGGAGAACCTCACATT
TCCTACCCACCCTGCATGAACGGGCTTTGAGAGAGGGAGAAGAG
ACGCGTACGCGGCCGCTCGAG - GFP Tag - GTTTAAAC
```



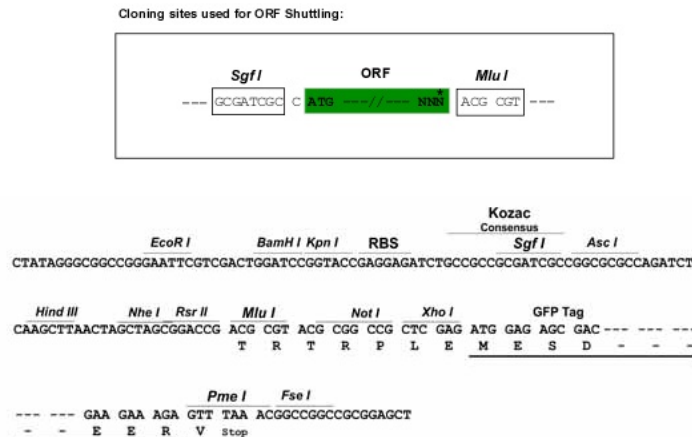
[View online »](#)

Protein Sequence: >Peptide sequence encoded by RG237386
 Blue=ORF Red=Cloning site Green=Tag(s)

MPLEQRSQHCKPEEGLEARGEALGLVGAQAPATEEQQTASSSSTLVEVTLGEVPAADSPSPHSPQGAS
 SFSTTINYTLWRQSDGSSNQEEGPRMFDLESEFQAAISRKMVELVHFLLLKYQAREPVTKAEMLES
 VLRNCQDFFPVIFSKASEYLQLVFGIEVVEVVPISHLYILVTCLGLSYDGLLDGNQVMPKTLGLLIIVLA
 IIAIEGDCAPEEKIWEELSMLEVFEGREDSVFAHPRKLLMQDLVQENYLEYRQVPGSDPACYEFLWGPR
 ALIETSIVKVLHHTLKIIGGEPHISYPPLHERALREGEE
 TRTRPLEMESDESGLPAMEIECRITGTLNGVEFELVGGEGTPEQGRMTNKMSTKGALTFSPYLLSHV
 MGYGFYHFGTYPSTYENPFLHAINNGGYNTRIEKYEDGGVLHVSFSYRYEAGRVIGDFKVMGTGFPEP
 SVIFTDKIIRSNATVEHLHPMGDNDLDGSFTRTFSLRDGGYSSVVDSHMHFKSAIHPSILQNGGPMFA
 FRRVEEDHSNTELGIVEYQHAFKTPDADAGEERV

Restriction Sites: SgfI-MluI

Cloning Scheme:



ACCN: NM_001282504

ORF Size: 942 bp

OTI Disclaimer: The molecular sequence of this clone aligns with the gene accession number as a point of reference only. However, individual transcript sequences of the same gene can differ through naturally occurring variations (e.g. polymorphisms), each with its own valid existence. This clone is substantially in agreement with the reference, but a complete review of all prevailing variants is recommended prior to use. [More info](#)

OTI Annotation: This clone was engineered to express the complete ORF with an expression tag. Expression varies depending on the nature of the gene.

Components: The ORF clone is ion-exchange column purified and shipped in a 2D barcoded Matrix tube containing 10ug of transfection-ready, dried plasmid DNA (reconstitute with 100 ul of water).

RefSeq: [NM_001282504.1](#), [NP_001269433.1](#)

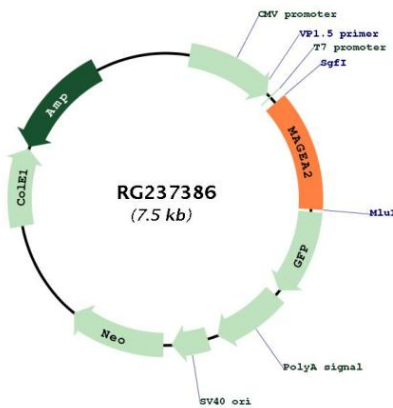
RefSeq Size: 1746 bp

RefSeq ORF: 945 bp

Locus ID: 4101
UniProt ID: [P43356](#)
Cytogenetics: Xq28
MW: 35 kDa

Gene Summary: This gene is a member of the MAGEA gene family. The members of this family encode proteins with 50 to 80% sequence identity to each other. The promoters and first exons of the MAGEA genes show considerable variability, suggesting that the existence of this gene family enables the same function to be expressed under different transcriptional controls. The MAGEA genes are clustered at chromosomal location Xq28. They have been implicated in some hereditary disorders, such as dyskeratosis congenita. This gene has two identical copies at different loci. Alternatively spliced transcript variants encoding the same protein have been identified for this gene. [provided by RefSeq, Jul 2008]

Product images:



Circular map for RG237386