

## Product datasheet for **RG237383**

### CRISPLD1 (NM\_001286777) Human Tagged ORF Clone

#### Product data:

|                           |  |
|---------------------------|--|
| Product Type:             | Expression Plasmids  |
| Product Name:             | CRISPLD1 (NM_001286777) Human Tagged ORF Clone                                 |
| Tag:                      | TurboGFP   |
| Symbol:                   | CRISPLD1   |
| Synonyms:                 | CRISP-10; CRISP10; LCRISP1   |
| Mammalian Cell Selection: | Neomycin   |
| Vector:                   | pCMV6-AC-GFP (PS100010)  |
| E. coli Selection:        | Ampicillin (100 ug/mL)   |
| ORF Nucleotide Sequence:  | >RG237383 representing NM_001286777.<br>Blue=ORF Red=Cloning site Green=Tag(s) |

```
GCTCGTTT TAGTGAACCGTCAGAATTTTGT AATACGACTCACTATAGGGCGGCCGGGAATTCGTCGACTG
GATCCGGTACCGAGGAGATCTGCCGCC GCGATCGCC
ATGAACATGAATGCAACCCATATTGCCATT CAGGTGTTCTGGCCCTGTATGTACACATTATACACAGG
GGAAACTGGTGGGGCCATGCCCCTTACAAACATGGGCGGCCCTGTTCTGCTTGCCACCTAGTTTTGGA
GGGGGCTGTAGAGAAAATCTGTGCTACAAAGAAGGGTCAGACAGGTATTATCCCCCTCGAGAAGAGGAA
ACAAATGAAATAGAACGACAGCAGTCACAAGTCCATGACACCCATGTCGGACAAGATCAGATGATAGT
AGCAGAAATGAAGTCATAAGCGCACAGCAAATGTCCCAAATTGTTTCTTGTGAAGTAAGATTAAGAGAT
CAGTGCAAAGGAACAACCTGCAATAGGTACGAATGTCCTGCTGGCTGTTTGGATAGTAAAGCTAAAGTT
ATTGGCAGTGTACATTATGAAATGCAATCCAGCATCTGTAGAGCTGCAATTCATTATGGTATAATAGAC
AATGATGGTGGCTGGGTAGATATCACTAGACAAGGAAGAAAGCATTATTTTCATCAAGTCCAATAGAAAT
GGTATTCAAACAATTGGCAAATATCAGTCTGCTAATTCCTTCACAGTCTCTAAAGTAACAGTTTCAGGCT
GTGACTTGTGAAACAACCTGTGGAACAGCTCTGTCCATTTACATAAGCCTGCTTCACATTGCCCAAGAGTA
TACTGTCTCGTAACTGTATGCAAGCAAATCCACATTATGCTCGTGAATTGGAACCTCGAGTTTATTCT
GATCTGTCCAGTATCTGCAGAGCAGCAGTACATGCTGGAGTGGTTCGAAATCACGGTGGTTATGTTGAT
GTAATGCCTGTGGACAAAAGAAAGACCTACATTGCTTCTTTTCAGAATGGAATCTTCTCAGAAAGTTTA
CAGAATCCTCCAGGAGGAAAGGCATT CAGAGTGTGTTGCTGTTGTG
ACGCGTACGCGGCCGCTCGAG - GFP Tag - GTTTAAAC
```



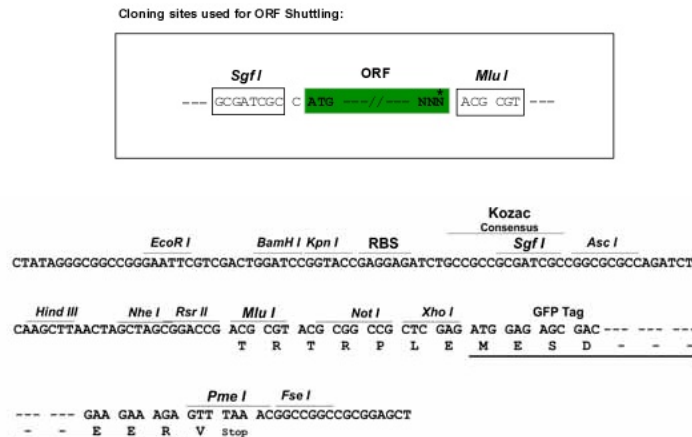
[View online »](#)

**Protein Sequence:** >Peptide sequence encoded by RG237383  
 Blue=ORF Red=Cloning site Green=Tag(s)

MNMNATHIVHSGVLALYVHIIHRGNWGHAPYKHGRPCSACPPSFGGGCRENLCKYKEGSDRYPPREEE  
 TNEIERQQSQVHDTHVTRSDSSRNEVISAQQMSQIVSCEVRLRDQCKGTTNRYECPAGCLDSKAKV  
 IGSVHYEMQSSICRAAIHYGIIDNDGGWVDITRQGRKHYFIKSNRNGIQTIGKYQSANSFTVSKVTVQA  
 VTCETTVEQLCPFHKPASHCPRVYCPNMCQANPHYARVIGTRVYSDLSSICRAAVHAGVVRNHGGYVD  
 VMPVDKRKTYIASFQNGIFSESLQNPPGGKAFRVFAVV  
 TRTRPLEMESDESGLPAMEIECRITGTLNGVEFELVGGGEGTPEQGRMTNKMSTKGALTFSPYLLSHV  
 MGYGFYHFGTYPSTYENPFLHAINNGGYTNTRIEKYEDGGVLHVSFSYRYEAGRVIGDFKVMGTGFPEP  
 SVIFTDKIIRSNAIVEHLHPMGDNDLDGSFTRTFSLRDGGYSSVVDSHMHFKSAIHPSILQNGGPMFA  
 FRRVEEDHSNTELGIVEYQHAFKTPDADAGEERV

**Restriction Sites:** SgfI-MluI

**Cloning Scheme:**



**ACCN:** NM\_001286777

**ORF Size:** 942 bp

**OTI Disclaimer:** The molecular sequence of this clone aligns with the gene accession number as a point of reference only. However, individual transcript sequences of the same gene can differ through naturally occurring variations (e.g. polymorphisms), each with its own valid existence. This clone is substantially in agreement with the reference, but a complete review of all prevailing variants is recommended prior to use. [More info](#)

**OTI Annotation:** This clone was engineered to express the complete ORF with an expression tag. Expression varies depending on the nature of the gene.

**Components:** The ORF clone is ion-exchange column purified and shipped in a 2D barcoded Matrix tube containing 10ug of transfection-ready, dried plasmid DNA (reconstitute with 100 ul of water).

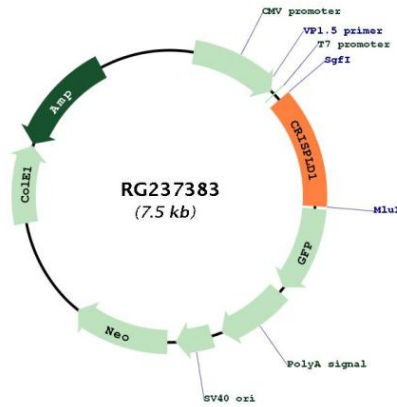
**RefSeq:** [NM\\_001286777.2](#)

**RefSeq Size:** 3701 bp

**RefSeq ORF:** 945 bp

Locus ID: 83690  
 UniProt ID: [Q9H336](#)  
 Cytogenetics: 8q21.13  
 Protein Families: Secreted Protein  
 MW: 35.6 kDa

**Product images:**



Circular map for RG237383