

Product datasheet for **RG237368**

ACSF3 (NM_001284316) Human Tagged ORF Clone

Product data:

Product Type:	Expression Plasmids
Product Name:	ACSF3 (NM_001284316) Human Tagged ORF Clone
Tag:	TurboGFP
Symbol:	ACSF3
Mammalian Cell Selection:	Neomycin
Vector:	pCMV6-AC-GFP (PS100010)
E. coli Selection:	Ampicillin (100 ug/mL)
ORF Nucleotide Sequence:	>RG237368 representing NM_001284316. Blue=ORF Red=Cloning site Green=Tag(s)

```
GCTCGTTTAGTGAACCGTCAGAATTTTGTAAACGACTCACTATAGGGCCGCCGGGAATTCGTCGACTG
GATCCGGTACCGAGGAGATCTGCCGCCGCGATCGCC
ATGATGCCTGAGTTCAGCCCTCAGCAGGTTTGGGAAAAGTTCTTAAGTTCTGAAACGCCGCGGATCAAT
GTCTTTATGGCAGTGCCTACAATATACACCAAGCTGATGGAGTACTACGACAGGCATTTTACCCAGCCG
CACGCCAGGATTTCTTGCGTGCAGTTTGTGAAGAAAAAATTAGGCTGATGGTCTCAGGCTCAGCTGCC
CTGCCCCCTCCAGTGTGGAGAAGTGAAGAATCACGGGCCACACCCTGCTGGAGCGGTATGGCATG
ACCGAGATCGGCATGGCTCTGTCCGGGCCCTGACCACTGCCGTGCGCCTGCCAGGTTCCGTGGGGACC
CCTGCTGGAGTACAGGTGCGCATTGTCTCAGAAAACCCACAGAGGGAAGCCTGCTCCTACACCATC
CACGCAGAGGGAGACGAGAGGGGGACCAAGGTGACCCCGGGTTTGAAGAAAAGGAGGGGGAGCTGCTG
GTGAGGGGACCCCTCCGTGTTTCGAGAATACTGGAATAAACAGAAAGAACTAAGAGTGCATTACCCCTG
GATGGCTGGTTTAAAGACAGGGGACACCGTGGTGTAAAGGATGGCCAGTACTGGATCCGAGGCCGGACC
TCAGTGGACATCATCAAGACTGGAGGCTACAAGGTGAGCGCCCTGGAGGTGGAGTGGCACCTGCTGGCC
CACCCAGCATCACAGATGTGGCTGTGATTGGAGTTCGGATATGACATGGGGCCAGCGGTCAGTCTGCT
GTGGTACCCCTCCGAGAAGGACACTCACTGTCCCACAGGGAGCTCAAAGAGTGGGCCAGAAATGTCCTG
GCCCGTACGCGGTGCCCTCGGAGCTGGTGTGGTGGAGGAGATCCCGGGAACCCAGATGGCAAGATT
GACAAGAAGGCGCTCATCAGGCACTTCCACCCCTCA
ACGCGTACGCGGCCGCTCGAG - GFP Tag - GTTTAAAC
```



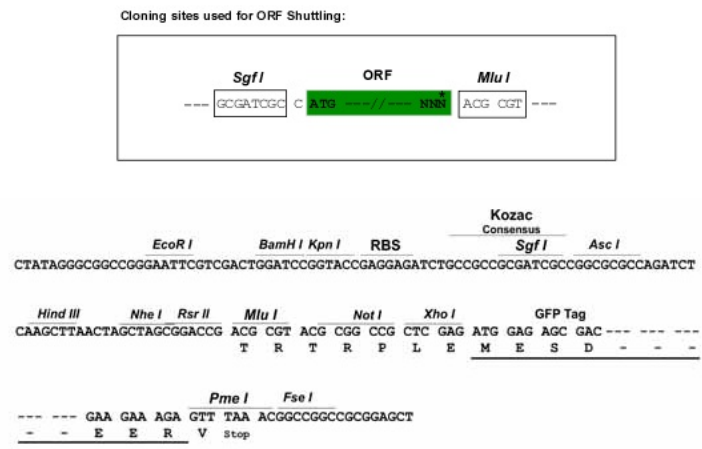
[View online »](#)

Protein Sequence: >Peptide sequence encoded by RG237368
 Blue=ORF Red=Cloning site Green=Tag(s)

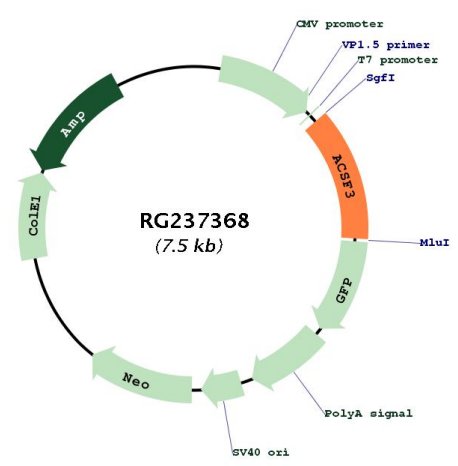
MMPEFSPQQVWEKFLSSETPRINVFMAVPTIYTKLMEYYDRHFTQPHAQDFLRAVCEEKIRLMVSGSAA
 LPLPVLEKWKNI TGHTLLERYGMTEIGMALSGPLTTAVRLPGSVGTPLPGVQVRI VSEN PQREACSYTI
 HAEGDERGTKVTPGFEEKEGELLVRGSPV FREYWNKPEETKSAFTLDGWFKTGDTVVFKDQYWIRGRT
 SVDI IKTGGYKVSAL E VEHLLA HPSITDVA VIGV PDMTWGQRVTAVVTLREGHLSHRELKEWARNVL
 APYAVPSELV LVEEIPRNQMGKIDKKALIRHFHPS
TRTRPLEMESDESGLPAMEIECRITGTLNGVEFELVGGGEGTPEQGRMTNKMKSTKGALTFSPYLLSHV
 MGYGFYHFGTYP SGYENPFLHAINNGGYNTRIEKYEDGGVLHVSFSYRYEAGRVIGDFKVMGTGFPEP
 SVIFTDKIIRSNATVEHLHPMGDNDLDGSFTRTFSLRDGGYSSVVD SHMHFKSAIHPSILQNGGPMFA
 FRRVEEDHSNTELGIVEYQHAFKTPDADAGEERV

Restriction Sites: SgfI-MluI

Cloning Scheme:



Plasmid Map:



ACCN:	NM_001284316
ORF Size:	933 bp
OTI Disclaimer:	The molecular sequence of this clone aligns with the gene accession number as a point of reference only. However, individual transcript sequences of the same gene can differ through naturally occurring variations (e.g. polymorphisms), each with its own valid existence. This clone is substantially in agreement with the reference, but a complete review of all prevailing variants is recommended prior to use. More info
OTI Annotation:	This clone was engineered to express the complete ORF with an expression tag. Expression varies depending on the nature of the gene.
Components:	The ORF clone is ion-exchange column purified and shipped in a 2D barcoded Matrix tube containing 10ug of transfection-ready, dried plasmid DNA (reconstitute with 100 ul of water).
RefSeq:	NM_001284316.2
RefSeq Size:	2888 bp
RefSeq ORF:	936 bp
Locus ID:	197322
Cytogenetics:	16q24.3
MW:	35.6 kDa
Gene Summary:	This gene encodes a member of the acyl-CoA synthetase family of enzymes that activate fatty acids by catalyzing the formation of a thioester linkage between fatty acids and coenzyme A. The encoded protein is localized to mitochondria, has high specificity for malonate and methylmalonate and possesses malonyl-CoA synthetase activity. Mutations in this gene are a cause of combined malonic and methylmalonic aciduria. Alternatively spliced transcript variants have been observed for this gene. [provided by RefSeq, Sep 2013]