

## Product datasheet for **RG237339**

### **NPSR1 (NM\_001300934) Human Tagged ORF Clone**

#### Product data:

Product Type:	Expression Plasmids
Product Name:	NPSR1 (NM_001300934) Human Tagged ORF Clone
Tag:	TurboGFP
Symbol:	NPSR1
Synonyms:	ASRT2; GPR154; GPRA; NPSR; PGR14; VRR1
Mammalian Cell Selection:	Neomycin
Vector:	pCMV6-AC-GFP (PS100010)
E. coli Selection:	Ampicillin (100 ug/mL)
ORF Nucleotide Sequence:	>RG237339 representing NM_001300934. Blue=ORF Red=Cloning site Green=Tag(s)

```
GCTCGTTT TAGTGAACCGTCAGAATTTTGT AATACGACTCACTATAGGGCGCCGGGAATTCGTCGACTG
GATCCGGTACCGAGGAGATCTGCCGCC CGCATCGCC
ATGCCAGCCAACTTCACAGAGGGCAGCTTCGATCCAGTGGGACCGGGCAGACGCTGGATTCTTCCCCA
GTGGCTTGCACTGAAACAGTGACTTTTACTGAAGTGGTGGAAAGGAAAGGAATGGGGTTCTTCTACTAC
TCCTTTAAGACTGAGCAATTGATAACTCTGTGGGTCTCTTTGTTTTACCATTGTTGGAAACTCCGTT
GTGCTTTTTTCCACATGGAGGAGAAAGAAGAAGTCAAGAATGACCTTCTTTGTGACTCAGCTGGCCATC
ACAGAAAAGCAAGCCAGGTCTCATTGTGATCGCCTGGAGCCTGTCTTTCTGTTCTCCATTCCCACC
CTGATCATATTTGGGAAGAGGACTGTCCAACGGTGAAGTGCAGTGTGGGCCCTGTGGCCTGACGAC
TCTACTGGACCCATACATGACCATCGTGGCCTTCTGGTGTACTTCATCCCTCTGACAATCATCAGC
ATCATGTATGGCATTGTGATCCGAATATTTGGATTAAGCAAAACCTACGAAACAGTGATTTCCAAC
TGCTCAGATGGGAACTGTGCAGCAGCTATAACCGAGGACTCATCTCAAAGGCAAAAATCAAGGCTATC
AAGTATAGCATCATCATTCTTGCCCTCATCTGCTGTTGGAGTCCATACTTCTGTTTGACATTTTG
GACAATTTCAACCTCCTTCCAGACCCAGGAGCGTTTCTATGCCTCTGTGATCATTGAGAACCTGCCA
GCATTGAATAGTGCCATCAACCCCTCATCTACTGTGTCTTCAGCAGCTCCATCTCTTCCCCTGCAGG
GAGCAAAGATCACAGGATTCAGAATGACGTTCCGGGAGAGAAGTGAAGGCATGAGATGCAGATTCTG
TCCAAGCCAGAATTCATC
ACGCGTACGCGGCCGCTCGAG - GFP Tag - GTTTAAAC
```



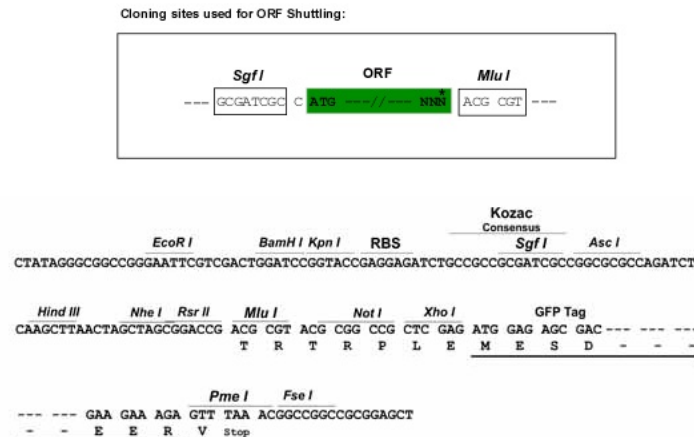
[View online »](#)

**Protein Sequence:** >Peptide sequence encoded by RG237339  
 Blue=ORF Red=Cloning site Green=Tag(s)

MPANFTEGSFDSSGTGQTLDSSPVACTETVTFTEVVEGKEWGSFYYSFKTEQLITLWLVFVFTIVGNSV  
 VLFSTWRRKKKSRMTFFVTQLAITEKQARVLIVIAWSLSFLFSIPTLIIFGKRTLNGEVQCWALWPDD  
 SYWTPYMTIVAVFLVYFIPLTIISIMYGIVRTIWIKSKTYETVISNCSDGKLCSSYNRGLISKAKIKAI  
 KYSIIILAFICWSPYFLFDILDNFLLPDTQERFYASVIIQNLPALNSAINPLIYCVFSSSISFPCR  
 EQRSQDSRMTFRERTERHEMQILSKPEFI  
 TRTRPLEMESDESGLPAMEIECRITGTLNGVEFELVGGEGTPEQGRMTNKMSTKGALTFSPYLLSHV  
 MGYGFYHFGTYPYSGYENPFLHAINNGGYNTRIEKYEDGGVLHVSFSYRYEAGRVIGDFKVMGTGFPED  
 SVIFTDKIIRS NATVEHLHPMGDNDLDGSFTRTFSLRDGGYSSVVD SHMHFKSAIHPSILQNGGPMFA  
 FRRVEEDHSNTELGIVEYQHAFKTPDADAGEERV

**Restriction Sites:** SgfI-MluI

**Cloning Scheme:**



**ACCN:** NM\_001300934

**ORF Size:** 915 bp

**OTI Disclaimer:** The molecular sequence of this clone aligns with the gene accession number as a point of reference only. However, individual transcript sequences of the same gene can differ through naturally occurring variations (e.g. polymorphisms), each with its own valid existence. This clone is substantially in agreement with the reference, but a complete review of all prevailing variants is recommended prior to use. [More info](#)

**OTI Annotation:** This clone was engineered to express the complete ORF with an expression tag. Expression varies depending on the nature of the gene.

**Components:** The ORF clone is ion-exchange column purified and shipped in a 2D barcoded Matrix tube containing 10ug of transfection-ready, dried plasmid DNA (reconstitute with 100 ul of water).

**RefSeq:** [NM\\_001300934.1](#), [NP\\_001287863.1](#)

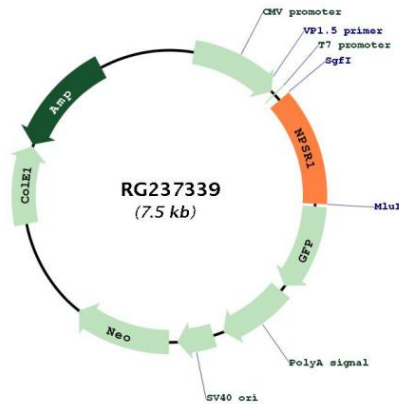
**RefSeq Size:** 1415 bp

**RefSeq ORF:** 918 bp

**Locus ID:** 387129  
**UniProt ID:** [Q6W5P4](#)  
**Cytogenetics:** 7p14.3  
**Protein Families:** Druggable Genome, Transmembrane  
**MW:** 35.6 kDa

**Gene Summary:** This gene encodes a member of the vasopressin/oxytocin subfamily of G protein-coupled receptors. The encoded membrane protein acts as a receptor for neuropeptide S and affects a variety of cellular processes through its signaling. Increased expression of this gene in ciliated cells of the respiratory epithelium and in bronchial smooth muscle cells is associated with asthma. Polymorphisms in this gene have also been associated with asthma susceptibility, panic disorders, inflammatory bowel disease, and rheumatoid arthritis. Alternative splicing results in multiple transcript variants. [provided by RefSeq, Jul 2014]

**Product images:**



Circular map for RG237339