

Product datasheet for **RG237323**

Serum Response Factor (SRF) (NM_001292001) Human Tagged ORF Clone

Product data:

Product Type:	Expression Plasmids
Product Name:	Serum Response Factor (SRF) (NM_001292001) Human Tagged ORF Clone
Tag:	TurboGFP
Symbol:	Serum Response Factor
Synonyms:	MCM1
Mammalian Cell Selection:	Neomycin
Vector:	pCMV6-AC-GFP (PS100010)
E. coli Selection:	Ampicillin (100 ug/mL)
ORF Nucleotide Sequence:	>RG237323 representing NM_001292001. Blue=ORF Red=Cloning site Green=Tag(s)

```
GCTCGTTT TAGTGAACCGTCAGAATTTTGT AATACGACTCACTATAGGGCGGCCGGGAATTCGTCGACTG
GATCCGGTACCGAGGAGATCTGCCGCC GCGATCGCC
ATGATCACCAGTGAGACCGCAAGGCACTGATTCAGACCTGCCTCAACTCGCCAGACTCTCCACCCCGT
TCAGACCCACAACAGACCAGAGAATGAGTGCCACTGGCTTTGAAGAGACAGATCTCACCTACCAGGTG
TCGGAGTCTGACAGCAGTGGGGAGACCAAGGACACACTGAAGCCGGCGTTCACAGTCACCAACCTGCCG
GGTACAACCTCCACCATCAAACAGCACCTAGCACCTCTACCACCATGCAAGTCAGCAGCGGCCCTCC
TTTCCCATCACCACCTACCTGGCACCAGTGTCTGCTAGTGTGAGCCAGTGTCTGCTGAGCAGTGC
GGACTGTGCTGAAGGTACAGGCAGCGGCCCTGTCTCCTCTGGGGCCCTATGCAGCTGCCTACCAGC
TTACCCTCATGCCTGGTGGGGCAGTGGCCAGCAGGTCCAGTGCAGGCCATTCAAGTGCACCAGGCC
CCACAGCAAGCGTCTCCCTCCCCTGACAGCAGCACAGACCTCACGCAGACCTCCTCCAGCGGGACAGTG
ACGCTGCCCGCCACCATCATGACGTATCCGTGCCCAACTGTGGGTGGCCACATGATGTACCCTAGC
CCGCATGCGGTGATGTATGCCCCACCTCGGGCCTGGGTGATGGCAGCCTCACCGTGTGAATGCCTTC
TCCCAGGCACCATCCACCATGCAGGTGTACACAGCCAGGTCCAGGAGCCAGGTGGCGTCCCCCAGGTG
TTCTGACAGCATCATCTGGGACAGTGCAGATCCCTGTTTCAGCAGTTCAGCTCCACCAGATGGCTGTG
ATAGGGCAGCAGGCCGGGAGCAGCAGCAACCTCACCGAGTACAGGTGGTGAACCTGGACACCGCCAC
AGCACCAAGAGTGAA
ACGCGTACGCGGCCGCTCGAG - GFP Tag - GTTTAAAC
```



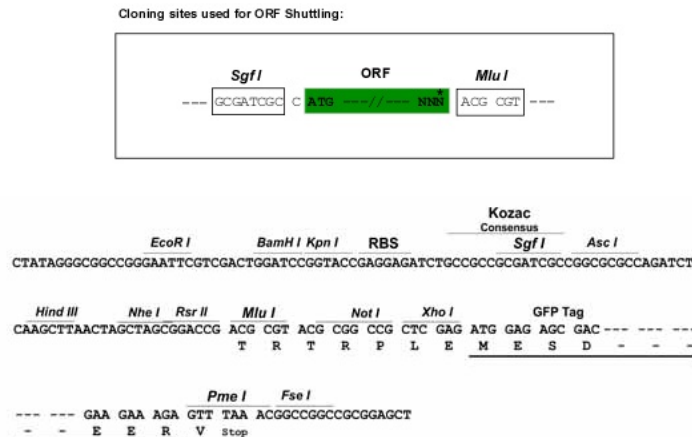
[View online »](#)

Protein Sequence: >Peptide sequence encoded by RG237323
 Blue=ORF Red=Cloning site Green=Tag(s)

MITSETGKALIQTCLNSPDSPPRSDPTTDQRMSATGFEEIDLTYQVSESDSSGETKDTLKPFTVTNLP
 GTTSTIQITAPSTSTTMQVSSGSPFITNYLAPVSAVSPSAVSSANGTVLKSTGSGPVSSGGLMQLPTS
 FTLMPGGAVAQQVPVQAIQVHQAPQQASPSRDSSTDLTQTSSSGTVTLPATIMTSSVPTTVGGHMMYPS
 PHAVMYAPTSGLGDGSLTVLNAFSQAPSTMQVSHSQVQEPGGVPQVFLTASSGTVQIPVSAVQLHQMAV
 IGQQAGSSNLTQLQVNLDTAHSKSE
 TRTRPLEMESDESGLPAMEIECRITGTLNGVEFELVGGGEGTPEQGRMTNKMSTKGALTFSPYLLSHV
 MGYGFYHFGTYPSTYENPFLHAINNGGYNTRIEKYEDGGVLHVSFSYRYEAGRVIGDFKVMGTGFPEP
 SVIFTDKIIIRSNATVEHLHPMGDNDLDGSFTRTFSLRDGGYSSVVDSHMHFKSAIHPSILQNGGPMFA
 FRRVEEDHSNTELGIVEYQHAFKTPDADAGEERV

Restriction Sites: SgfI-MluI

Cloning Scheme:



ACCN: NM_001292001

ORF Size: 912 bp

OTI Disclaimer: The molecular sequence of this clone aligns with the gene accession number as a point of reference only. However, individual transcript sequences of the same gene can differ through naturally occurring variations (e.g. polymorphisms), each with its own valid existence. This clone is substantially in agreement with the reference, but a complete review of all prevailing variants is recommended prior to use. [More info](#)

OTI Annotation: This clone was engineered to express the complete ORF with an expression tag. Expression varies depending on the nature of the gene.

Components: The ORF clone is ion-exchange column purified and shipped in a 2D barcoded Matrix tube containing 10ug of transfection-ready, dried plasmid DNA (reconstitute with 100 ul of water).

RefSeq: [NM_001292001.2](#)

RefSeq Size: 3417 bp

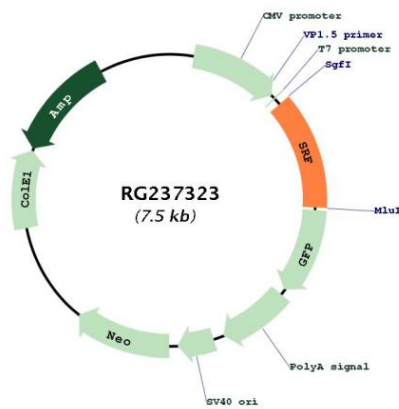
RefSeq ORF: 915 bp

Locus ID: 6722
UniProt ID: [P11831](#)
Cytogenetics: 6p21.1
Protein Families: Druggable Genome, Transcription Factors
Protein Pathways: MAPK signaling pathway

MW: 31.5 kDa

Gene Summary: This gene encodes a ubiquitous nuclear protein that stimulates both cell proliferation and differentiation. It is a member of the MADS (MCM1, Agamous, Deficiens, and SRF) box superfamily of transcription factors. This protein binds to the serum response element (SRE) in the promoter region of target genes. This protein regulates the activity of many immediate-early genes, for example c-fos, and thereby participates in cell cycle regulation, apoptosis, cell growth, and cell differentiation. This gene is the downstream target of many pathways; for example, the mitogen-activated protein kinase pathway (MAPK) that acts through the ternary complex factors (TCFs). Two transcript variants encoding different isoforms have been found for this gene. [provided by RefSeq, May 2014]

Product images:



Circular map for RG237323