

Product datasheet for **RG237316**

Centaurin alpha 1 (ADAP1) (NM_001284310) Human Tagged ORF Clone

Product data:

Product Type:	Expression Plasmids
Product Name:	Centaurin alpha 1 (ADAP1) (NM_001284310) Human Tagged ORF Clone
Tag:	TurboGFP
Symbol:	Centaurin alpha 1
Synonyms:	CENTA1; GCS1L; p42IP4
Mammalian Cell Selection:	Neomycin
Vector:	pCMV6-AC-GFP (PS100010)
E. coli Selection:	Ampicillin (100 ug/mL)
ORF Nucleotide Sequence:	>RG237316 representing NM_001284310. Blue=ORF Red=Cloning site Green=Tag(s)

```
GCTCGTTTAGTGAACCGTCAGAATTTGTAAACGACTCACTATAGGGCGCCGGGAATTCGTCGACTG
GATCCGGTACCGAGGAGATCTGCCGCCGCGATCGCC
ATGGCCTCCACGGGAACGACGCCGCGAGAGCCAGGTTTGTAGTCCAAAGTACCCTCCTTCTACTACCGG
CCCACGCCCTCCGACTGCCAGCTCCTTCGAGAGCAGTGGATCCGGGCAAGTACGAGCGACAGGAGTTC
ATCTACCCGGAGAAGCAGGAGCCCTACTCGGCAGGGTACCGTGAGGGTTTTCTCTGGAAGCGTGCCGG
GACAACGGGCAGTTTTTGTAGCCGGAAGTTGTGCTGACAGAACGAGGGTGCTCTGAAGTATTTCAAC
AGAAATGATGCCAAGGAGCCCAAGGCCGTGATGAAGATCGAGCACCTGAACGCCACCTTCCAGCCGGCC
AAGATCGGCCACCCACGGCCTGCAGGTACCTACCTGAAGGACAACAGCACCCGTAACATCTTCATC
TACCATGAGGACGGGAAGGAGATTGTGGACTGGTTCAATGCACTCCGAGCTGCTCGTTCCACTACCTG
CAGGTGGCATTCCAGGGGCCAGCGACGAGATCTGGTGCCAAAGCTCTCCAGGAACTACCTGAAGGAA
GGCTACATGGAGAAGACGGGGCCCAAGCAAACGGAAGGCTTCCGGAAGCGCTGGTTACCATGGATGAC
CGCAGGCTCATGTACTTCAAAGACCCCTGGACGCCTTCGCCGAGGGGAAGTCTTCATTGGCAGCAAG
GAGAGTGGCTACACGGTGTGATGGTTCCCGCCGTCCACCCAGGGCCACCACTGGCCACATGGCATC
ACCATCGTCACGCCGACCGCAAGTTTCTGTTTGCCTGCGAGACGGAGTCCGACCAGAGGGAGTGGGTG
GCGGCCCTCCAGAAGCGGTGGACAGGCCCATGCTGCCCCAGGAGTACCGAGTGGAGGCCACTTCAAG
CATAAACCT
ACGCGTACGCGGCCGCTCGAG - GFP Tag - GTTTAAAC
```



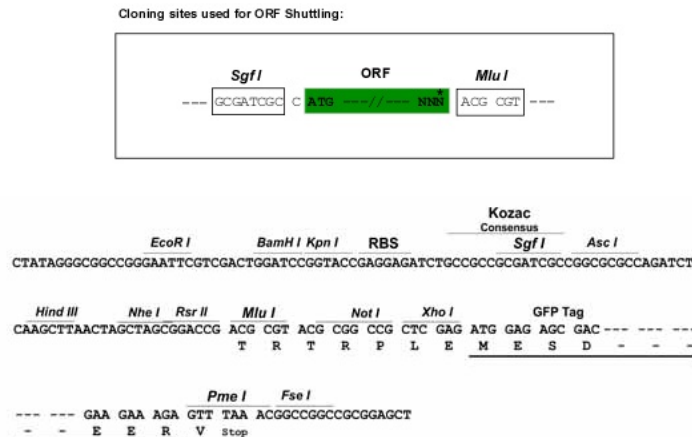
[View online »](#)

Protein Sequence: >Peptide sequence encoded by RG237316
 Blue=ORF Red=Cloning site Green=Tag(s)

MASHGNDAAARARFESKVPSPFYRPTSDCQLLREQWIRAKYERQEFIYPEKQEPYSAGYREGFLWKRGR
 DNGQFLSRKFVLTEREGALKYFNNDAKEPKAVMKIEHLNATFQPAKIGHPHGLQVTYLKDSTRNIFI
 YHEDGKEIVDFWNLRAARFHYLQVAFPGASDADLVPKLSRNYLKEGYMEKTGPKQTEGFRKRWF TMD
 RRLMYFKDPLDAFARGEVFIGSKESGYVLHGFPSTQGHHPHGITIVTPDRKFLFACETESDQREWV
 AAFQKAVDRPMLPQEYAVEAHFKHKP
 TRTRPLEMESDESGLPAMEIECRITGTLNGVEFELVGGGEGTPEQGRMTNKMSTKGALTFSPYLLSHV
 MGYGFYHFGTYPSTYENPFLHAINNGGYNTRIEKYEDGGVLHVSFSYRYEAGRVIGDFKVMGTGFPED
 SVIFTDKIIRSNATVEHLHPMGDNDLDGSFTRTFSLRDGGYSSVVDSHMHFKSAIHPSILQNGGPMFA
 FRRVEEDHSNTELGIVEYQHAFKTPDADAGEERV

Restriction Sites: SgfI-MluI

Cloning Scheme:



ACCN: NM_001284310

ORF Size: 906 bp

OTI Disclaimer: The molecular sequence of this clone aligns with the gene accession number as a point of reference only. However, individual transcript sequences of the same gene can differ through naturally occurring variations (e.g. polymorphisms), each with its own valid existence. This clone is substantially in agreement with the reference, but a complete review of all prevailing variants is recommended prior to use. [More info](#)

OTI Annotation: This clone was engineered to express the complete ORF with an expression tag. Expression varies depending on the nature of the gene.

Components: The ORF clone is ion-exchange column purified and shipped in a 2D barcoded Matrix tube containing 10ug of transfection-ready, dried plasmid DNA (reconstitute with 100 ul of water).

RefSeq: [NM_001284310.1](#), [NP_001271239.1](#)

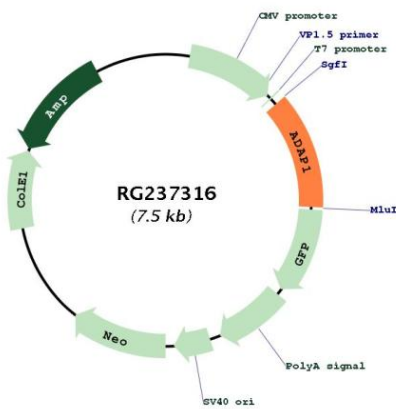
RefSeq Size: 2110 bp

RefSeq ORF: 909 bp

Locus ID: 11033
UniProt ID: [O75689](#)
Cytogenetics: 7p22.3
Protein Families: Druggable Genome
MW: 35.8 kDa

Gene Summary: GTPase-activating protein for the ADP ribosylation factor family (Probable). Binds phosphatidylinositol 3,4,5-trisphosphate (PtdInsP3) and inositol 1,3,4,5-tetrakisphosphate (InsP4).[UniProtKB/Swiss-Prot Function]

Product images:



Circular map for RG237316