

Product datasheet for **RG237306**

TID1 (DNAJA3) (NM_001286516) Human Tagged ORF Clone

Product data:

Product Type:	Expression Plasmids
Product Name:	TID1 (DNAJA3) (NM_001286516) Human Tagged ORF Clone
Tag:	TurboGFP
Symbol:	TID1
Synonyms:	HCA57; hTID-1; TID1
Mammalian Cell Selection:	Neomycin
Vector:	pCMV6-AC-GFP (PS100010)
E. coli Selection:	Ampicillin (100 ug/mL)
ORF Nucleotide Sequence:	>RG237306 representing NM_001286516. Blue=ORF Red=Cloning site Green=Tag(s)

```
GCTCGTTTAGTGAACCGTCAGAATTTGTAAACGACTCACTATAGGGCGCCGGGAATTCGTCGACTG
GATCCGGTACCGAGGAGATCTGCCGCCGCGATCGCC
ATGGCTGAGCCGCAAGCTGAGCGTCCCCGCCTTTGCGTCTCCCTGACCTCTTGGCGCCCGGAGCGCT
GCTGACATTGAGACCTGGTGTGACGCTTACAGGAAGATCTTTGGCGAGTTCTCATCCTCTTCATTTGGA
GATTTCCAGACCGTGTGGATCAGCCTCAGGAATACTTCATGGAGTTGACATTCAATCAAGCTGCAAAG
GGGGTCAACAAGGAGTTCACCGTGAACATCATGGACACGTGTGAGCGCTGCAACGGCAAGGGGAACGAG
CCCGGCACCAAGGTGCAGCATTGCCACTACTGTGGCGGCTCCGGCATGAAACCATCAACACAGGCCCT
TTTGTGATGCGTCCACGTGTAGGAGATGTGGTGGCCGCGCTCCATCATCATATCGCCCTGTGTGGTC
TGCAAGGGAGCAGGACAAGCCAAGCAGAAAAAGCGAGTGATGATCCCTGTGCCTGCAGGAGTCGAGGAT
GGCCAGACCGTGAGGATGCCTGTGGGAAAAAGGAAATTTTCATTACGTTGAGGTTGAGGAAAGCCCT
GTGTTCCGGAGGGACGGCGCAGACATCCACTCCGACCTCTTTATTTCTATAGCTCAGGCTCTTCTGGG
GGTACAGCCAGAGCCAGGGCCTGTACGAGACGATCAACGTGACGATCCCCCTGGGACTCAGACAGAC
CAGAAGATTCCGATGGTGGGAAAGGCATCCCCGGATTAACAGCTACGGCTACGGAGACCACTACATC
CACATCAAGATACGAGTCCAAAGAGGCTAACGAGCCGGCAGCAGAGCCTGATCCTGAGCTACGCCGAG
GACGAGACAGATGTGGAGGGGACGGTGAACGGCGTCACCCTCACCAGCTCTGAAAAAGATCCACTGGA
AAC
ACGCGTACGCGGCCGCTCGAG - GFP Tag - GTTTAAAC
```



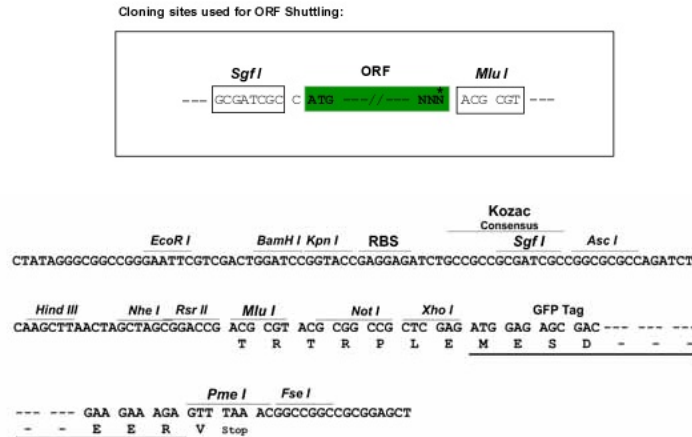
[View online »](#)

Protein Sequence: >Peptide sequence encoded by RG237306
 Blue=ORF Red=Cloning site Green=Tag(s)

MAEPQAERPRLCVFPDLLRPPSAADIETWCQPYRKIFGEFSSSSFGDFQTVFDQPQEYFMELTFNQAAK
 GVNKEFTVNIMDTCERCNGKGNPEPGTKVQHCHYCGGSGMETINTGPFVMRSTCRRCGGRGSIIISPCVV
 CRGAGQAKQKKRVMIPVPAGVEDGQTVRMPVGKREIFITFRVQKSPVFRRDGADIHSDLFISIAQALLG
 GTARAQGLYETINVTIPPQTQDQKIRMGKGKIPRINSYGYGDHYIHIKIRVPKRLTSRQQSLILSYAE
 DETDVEGTVNGVTLTSSGKRSTGN
 TRTRPLEMESDESGLPAMEIECRITGTLNGVEFELVGGGEGTPEQGRMTNKMKSTKGALTFSPYLLSHV
 MGYGFYHFGTYPSTYENPFLHAINNGGYNTRIEKYEDGGVLHVSFSYRYEAGRVIGDFKVMGTGFPED
 SVIFTDKIIRSNATVEHLHPMGDNDLDGSFTRTFSLRDGGYSSVVDSHMHFKSAIHPSILQNGGPMFA
 FRRVEEDHSNTELGIVEYQHAFKTPDADAGEERV

Restriction Sites: SgfI-MluI

Cloning Scheme:



ACCN: NM_001286516

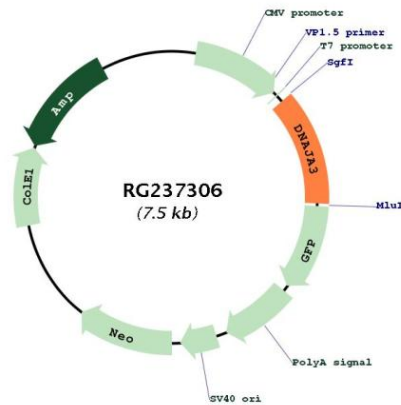
ORF Size: 900 bp

OTI Disclaimer: Due to the inherent nature of this plasmid, standard methods to replicate additional amounts of DNA in E. coli are highly likely to result in mutations and/or rearrangements. Therefore, OriGene does not guarantee the capability to replicate this plasmid DNA. Additional amounts of DNA can be purchased from OriGene with batch-specific, full-sequence verification at a reduced cost. Please contact our customer care team at custsupport@origene.com or by calling 301.340.3188 option 3 for pricing and delivery.

The molecular sequence of this clone aligns with the gene accession number as a point of reference only. However, individual transcript sequences of the same gene can differ through naturally occurring variations (e.g. polymorphisms), each with its own valid existence. This clone is substantially in agreement with the reference, but a complete review of all prevailing variants is recommended prior to use. [More info](#)

OTI Annotation:	This clone was engineered to express the complete ORF with an expression tag. Expression varies depending on the nature of the gene.
Components:	The ORF clone is ion-exchange column purified and shipped in a 2D barcoded Matrix tube containing 10ug of transfection-ready, dried plasmid DNA (reconstitute with 100 ul of water).
RefSeq:	NM_001286516.1 , NP_001273445.1
RefSeq Size:	2314 bp
RefSeq ORF:	903 bp
Locus ID:	9093
UniProt ID:	Q96EY1
Cytogenetics:	16p13.3
MW:	33.5 kDa
Gene Summary:	This gene encodes a member of the DNAJ/Hsp40 protein family. DNAJ/Hsp40 proteins stimulate the ATPase activity of Hsp70 chaperones and play critical roles in protein folding, degradation, and multimeric complex assembly. The encoded protein is localized to mitochondria and mediates several cellular processes including proliferation, survival and apoptotic signal transduction. The encoded protein also plays a critical role in tumor suppression through interactions with oncogenic proteins including ErbB2 and the p53 tumor suppressor protein. Alternatively spliced transcript variants encoding multiple isoforms have been observed for this gene. [provided by RefSeq, Aug 2011]

Product images:



Circular map for RG237306