

Product datasheet for **RG237291**

Sprouty 4 (SPRY4) (NM_001293289) Human Tagged ORF Clone

Product data:

Product Type:	Expression Plasmids
Product Name:	Sprouty 4 (SPRY4) (NM_001293289) Human Tagged ORF Clone
Tag:	TurboGFP
Symbol:	Sprouty 4
Synonyms:	HH17
Mammalian Cell Selection:	Neomycin
Vector:	pCMV6-AC-GFP (PS100010)
E. coli Selection:	Ampicillin (100 ug/mL)
ORF Nucleotide Sequence:	>RG237291 representing NM_001293289. Blue=ORF Red=Cloning site Green=Tag(s)

```
GCTCGTTTAGTGAACCGTCAGAATTTTGTAAACGACTCACTATAGGGCGCCGGGAATTCGTCGACTG
GATCCGGTACCGAGGAGATCTGCCGCCGCGATCGCC
ATGGAGCCCCGATCCCACAGAGCGCCCCCTTGACTCCCAACTCAGTCATGGTCCAGCCCCTTCTTGAC
AGCCGGATGTCCCACAGCCGGCTCCAGCACCCACTCACCATCCTACCCATTGACCAGGTGAAGACCAGC
CATGTGGAGAATGACTACATAGACAACCCTAGCCTGGCCCTGACCACCGCCCAAAGCGGACCCGGGGC
GGGGCCCCAGAGCTGGCCCCGACGCCCGCCGCTGTGACCAGGATGTACCCACCATTGGATCTCCTTC
AGCGGGCGCCCCAGCTCTGTGAGCAGCAGCAGCACATCCTCTGACCAACGGCTTTAGACCACATG
GCACCACCACCCGTGGCTGACCAGCCTCACCAGGGCTGTGCGCATCCAGCCAAAGGTGGTCCACTGC
CAGCCGCTGGACCTCAAGGGCCCGCGGTCCCACCCGAGCTGGACAAGCACTTCTTGCTGTGCGAGGCC
TGTGGGAAGTGTAAATGCAAGGAGTGTGCATCCCCCGGACGTTGCCTTCTGCTGGGTCTGCAACCAG
GAGTGCCTGTGCTCAGCCAGACTCTGGTCAACTATGGCACGTGCATGTGTTGGTGCAGGGCATCTTC
TACCACTGCACGAATGAGGACGATGAGGGCTCCTGCGCTGACCACCCCTGCTCCTGCTCCCGCTCCAAC
TGCTGCGCCCGCTGGTCTTCATGGGTGCTCTCCTCGTGGTGTGCCCTGCCTGCTGTACTGCTGCT
GCCACCGGCTGCGTGAAGCTGGCCAGCGTGGCTACGACCGTCTGCGCCGCCCTGGTTGCCGCTGCAAG
CACACGAACAGCGTCATCTGCAAAGCAGCCAGCGGGGATGCCAAGACCAGCAGCCCCGACAAGCCTTTC
ACGCGTACGCGGCCGCTCGAG - GFP Tag - GTTTAAAC
```



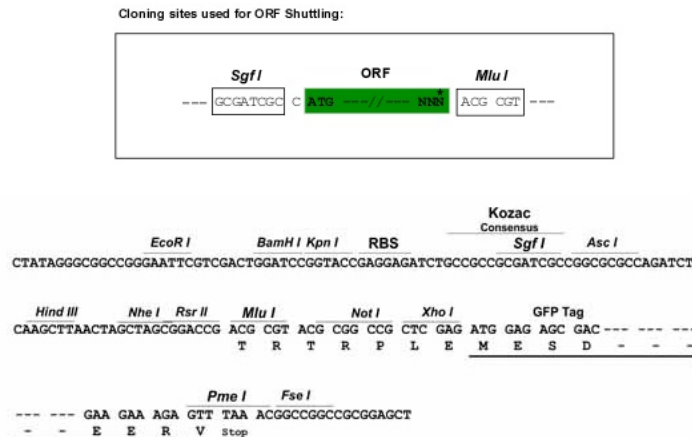
[View online »](#)

Protein Sequence: >Peptide sequence encoded by RG237291
 Blue=ORF Red=Cloning site Green=Tag(s)

MEPPIPQSAPLTPNSVMVQPLLD SRMSHSRLQHPLTILPIDQVKTSHVENDYIDNP SLALTTGPKRTRG
 GAPELAPTPARCDQDVTHHWISFSGRPSSVSSSSSTSSDQRLLDHMAPPVADQASPRAVRIQPKVVHC
 QPLDLKGPVPPPELDKHFLLCEACGKCKCKE CASPRTLPCSWVCNQECLCSAQTLYNYGTCLVQGI
 YHCTNEDDEGSCADHPCSCSRSNCCARWSFMGALSVVLPCLLCYLPATGCVKLAQRGYDRLRRPGCRCK
 HTNSVICKAASGDAKTSRPDKPF
 TRTRPLEMESDESGLPAMEIECRITGTLNGVEFELVGGGEGTPEQGRMTNKMSTKGALTFSPYLLSHV
 MGYGFYHFGTYPSTYENPFLHAINNGGYNTRIEKYEDGGVLHVSFSYRYEAGRVIGDFKVMGTGFPED
 SVIFTDKIIRSNATVEHLHPMGDNDLDGSFTRTFSLRDGGYSSVVD SHMHFKSAIHPSILQNGGPMFA
 FRRVEEDHSNTELGIVEYQHAFKTPDADAGEERV

Restriction Sites: SgfI-MluI

Cloning Scheme:



ACCN: NM_001293289

ORF Size: 897 bp

OTI Disclaimer: The molecular sequence of this clone aligns with the gene accession number as a point of reference only. However, individual transcript sequences of the same gene can differ through naturally occurring variations (e.g. polymorphisms), each with its own valid existence. This clone is substantially in agreement with the reference, but a complete review of all prevailing variants is recommended prior to use. [More info](#)

OTI Annotation: This clone was engineered to express the complete ORF with an expression tag. Expression varies depending on the nature of the gene.

Components: The ORF clone is ion-exchange column purified and shipped in a 2D barcoded Matrix tube containing 10ug of transfection-ready, dried plasmid DNA (reconstitute with 100 ul of water).

RefSeq: [NM_001293289.2](#)

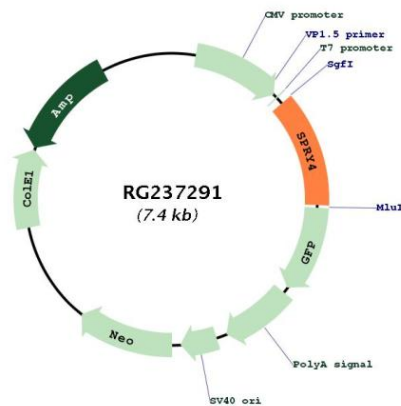
RefSeq Size: 5319 bp

RefSeq ORF: 900 bp

Locus ID: 81848
UniProt ID: [Q9C004](#)
Cytogenetics: 5q31.3
Protein Pathways: Jak-STAT signaling pathway
MW: 32.5 kDa

Gene Summary: This gene encodes a member of a family of cysteine- and proline-rich proteins. The encoded protein is an inhibitor of the receptor-transduced mitogen-activated protein kinase (MAPK) signaling pathway. Activity of this protein impairs the formation of active GTP-RAS. Nucleotide variation in this gene has been associated with hypogonadotropic hypogonadism 17 with or without anosmia. Alternative splicing results in a multiple transcript variants. [provided by RefSeq, Jun 2014]

Product images:



Circular map for RG237291