

Product datasheet for **RG237283**

PSG7 (NM_001206650) Human Tagged ORF Clone

Product data:

Product Type:	Expression Plasmids
Product Name:	PSG7 (NM_001206650) Human Tagged ORF Clone
Tag:	TurboGFP
Symbol:	PSG7
Synonyms:	PSBG-7; PSG1; PSGGA
Mammalian Cell Selection:	Neomycin
Vector:	pCMV6-AC-GFP (PS100010)
E. coli Selection:	Ampicillin (100 ug/mL)
ORF Nucleotide Sequence:	>RG237283 representing NM_001206650. Blue=ORF Red=Cloning site Green=Tag(s)

```
GCTCGTTTAGTGAACCGTCAGAATTTTGTAAACGACTCACTATAGGGCGCCGGGAATTCGTCGACTG
GATCCGGTACCGAGGAGATCTGCCGCCGCGATCGCC
ATGGGGCCCTCTCAGCCCTCCCTGCACACAGCATATAACCTGGAAAGGGCTCCTGCTCACAGTGGAG
ACTCCCAAACCTCCATCTCCAGCAGCAATTTCAACCCAGGGAGGCCACGGAGGCTGTGATTTTAAAC
TGTGATCCTGAGACTCCAGATGCAAGCTACCTGTGGTGGATGAATGGTCAGAGCCTCCCTATGACTCAC
AGCTTGCAGCTGTCTGAAACCAACAGGACCCTCTACCTATTTGGTGTCAAAACTATACTGCAGGACCC
TATGAATGTGAAATACGGAACCCAGTGAGTGCCAGCCGAGTGACCCAGTCACCCTGAATCTCCTCCCG
AAGCTGCCAAGCCCTACATACCATCAATAACTTAAACCCAGGGAGAATAAGGATGTCTCAACCTTC
ACCTGTGAACCTAAGAGTGAGAACTACACCTACATTTGGTGGCTAAATGGTCAGAGCCTCCCGGTCAGT
CCCAGGGTAAAGCGACGATTGAAAACAGGATCCTCATTCTACCCAGTGTACGAGAAATGAAAACAGGA
CCCTATCAATGTGAAATACGGGACCGATATGGTGGCATCCGAGTGACCCAGTCACCCTGAATGTCTC
TATGGTCCAGACCTCCCCAGAATTTACCCTTATTACCTATTACCATTACGACAAAACCTCTACTTG
TCCTGCTTTGCGGACTCTAACCCACGGCAGTATTCTTGGACAATTAATGGGAAGTTTCAGCTATCA
GGACAAAAGCTTTCTATCCCCAGATTACTACAAAGCATAGCGGGCTCTATGCTTGCTGTTCGTAAC
TCAGCCACTGGCAAGGAAAGCTCCAAATCCGTGACAGTCAGAGTCTCTGACTGGACATTACCC
ACGCGTACGCGGCCGCTCGAG - GFP Tag - GTTTAAAC
```



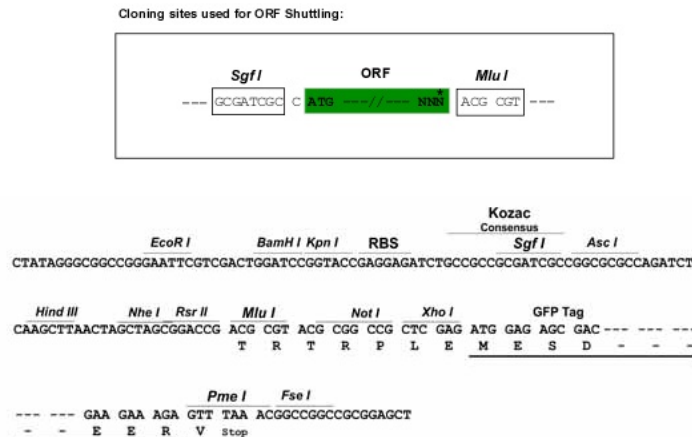
[View online »](#)

Protein Sequence: >Peptide sequence encoded by RG237283
 Blue=ORF Red=Cloning site Green=Tag(s)

MGPLSAPPCTQHITWKGLLLTVETPKPSISSNFNPREATEAVILTCDPETPDASYLWWMNGQSLPMT
 SLQLSETNRTL YLFGVTNYTAGPYECEIRNPVSASRSDPVTLLNLLPKLPKYITINLNPRENKDVSTF
 TCEPKSENYYIWWLNGQSLPVSPPRVKRRRIENRILILPSVTRNETGPYQCEIRDYGGIRSDPVTLNVL
 YGPDLPRIYPSFTYYHSGQNL YLSCFADSNPPAQYSWTINGKFQLSGQKLSIPQITTKHSGLYACSVRN
 SATGKESSKSVTVRVSDWTLP
 TRTRPLEMESDESGLPAMEIECRITGTLNGVEFELVGGEGTPEQGRMTNKMSTKGALTFSPYLLSHV
 MGYGFYHFGTYPSTYENPFLHAINNGGYNTRIEKYEDGGVLHVSFSYRYEAGRVIGDFKVMGTGFPE
 SVIFTDKIIIRSNATVEHLHPMGDNDLDGSFTRTFSLRDGGYSSVVD SHMHFKSAIHPSILQNGGPMFA
 FRRVEEDHSNTELGIVEYQHAFKTPDADAGEERV

Restriction Sites: SgfI-MluI

Cloning Scheme:



ACCN: NM_001206650

ORF Size: 891 bp

OTI Disclaimer: The molecular sequence of this clone aligns with the gene accession number as a point of reference only. However, individual transcript sequences of the same gene can differ through naturally occurring variations (e.g. polymorphisms), each with its own valid existence. This clone is substantially in agreement with the reference, but a complete review of all prevailing variants is recommended prior to use. [More info](#)

OTI Annotation: This clone was engineered to express the complete ORF with an expression tag. Expression varies depending on the nature of the gene.

Components: The ORF clone is ion-exchange column purified and shipped in a 2D barcoded Matrix tube containing 10ug of transfection-ready, dried plasmid DNA (reconstitute with 100 ul of water).

RefSeq: [NM_001206650.2](#)

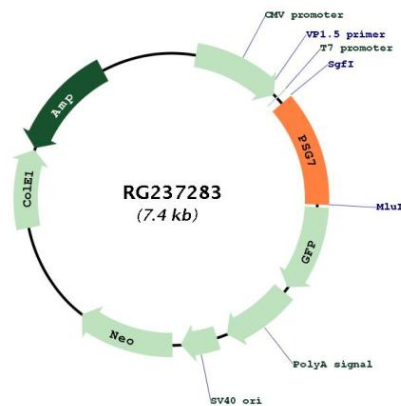
RefSeq Size: 1680 bp

RefSeq ORF: 894 bp

Locus ID: 5676
Cytogenetics: 19q13.31
Protein Families: Secreted Protein
MW: 33.9 kDa

Gene Summary: This gene is a member of the pregnancy-specific glycoprotein (PSG) gene family. The PSG genes are a subgroup of the carcinoembryonic antigen (CEA) family of immunoglobulin-like genes, and are found in a gene cluster at 19q13.1-q13.2 telomeric to another cluster of CEA-related genes. The PSG genes are expressed by placental trophoblasts and released into the maternal circulation during pregnancy, and are thought to be essential for maintenance of normal pregnancy. Alternative splicing results in multiple transcript variants. [provided by RefSeq, Feb 2014]

Product images:



Circular map for RG237283