

Product datasheet for **RG237278**

MEMO1 (NM_001301833) Human Tagged ORF Clone

Product data:

Product Type:	Expression Plasmids
Product Name:	MEMO1 (NM_001301833) Human Tagged ORF Clone
Tag:	TurboGFP
Symbol:	MEMO1
Synonyms:	C2orf4; CGI-27; MEMO; NS5ATP7
Mammalian Cell Selection:	Neomycin
Vector:	pCMV6-AC-GFP (PS100010)
E. coli Selection:	Ampicillin (100 ug/mL)
ORF Nucleotide Sequence:	>RG237278 representing NM_001301833. Blue=ORF Red=Cloning site Green=Tag(s)

```
GCTCGTTTGTAGTGAACCGTCAGAATTTTGTAAACGACTCACTATAGGGCGCCGGGAATTCGTCGACTG
GATCCGGTACCGAGGAGATCTGCCGCCGCGATCGCC
ATGTCCAACCGAGTGGTCTGCCGAGAAGCCAGTCACGCCGGGAGCTGGTACACAGCCTCAGGACCGCAG
CTGAATGCACAGCTAGAAGGTTGGCTTTCACAAGTACAGTCTACAAAAGACCTGCTAGAGCCATTATT
GCCCCCATGCAGGATATACGTACTGTGGGTCTTGTGCTGCCATGCTTATAACAAGTGGATCCGTCT
ATTACCCGGAGAATTTTCATCCTTGGGCCCTTCTCATCATGTGCCCTCTCTCGATGTGCACTTCCAGT
GTGGATATATATAGGACACCTCTGTATGACCTTCGTATTGACCAAAGATTTACGGAGAAGTGTGGAAG
ACAGGAATGTTTGAACGCATGTCTCTGCAGACAGATGAAGATGAACACAGTATTGAAATGCATTTGCCT
TATACAGCTAAAGCCATGGAAAGCCATAAGGATGAGTTTACCATTATTCCTGACTGGTTGGAGCTCTG
AGTGAGTCAAAAGAACAGGAATTCGAAAACTTTCAGTAAATATCTAGCGGATCCTAGTAAATCTCTTT
GTGGTTTCTTCTGATTTCTGCCATTGGGGTCAAAGGTTCCGTTACAGTTACTATGATGAATCCCAGGGG
GAGATTTATAGATCCATTGAACATCTAGATAAAATGGGTATGAGTATTATAGAACAATTAGACCCTGTA
TCTTTTAGCAATTACTTGAAGAAATACCATAATACTATATGTGGAAGACATCCCATTGGGGTGTATTA
AATGCTATCACAGAGCTCCAGAAGAATGGAATGAATATGAGTTTTTCGTTTTTGAATTATGCCAGTCC
AGCCAGTGTAGAACTGGCAAGACAGTTCAGTGAGTTATGCAGCTGGAGCACTCACGGTCCAC
ACGCGTACGCGGCCGCTCGAG - GFP Tag - GTTTAAAC
```



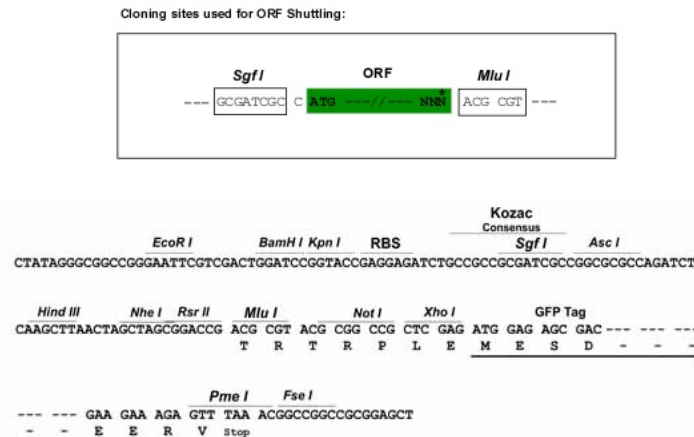
[View online »](#)

Protein Sequence: >Peptide sequence encoded by RG237278
 Blue=ORF Red=Cloning site Green=Tag(s)

MSNRVVCREASHAGSWYTASGPQLNALEGWLSQVQSTKRPARAIIAPHAGYTYCGSCAAHAYKQVDPS
 ITRRIFILGPSHHVPLSRCALSSVDIYRTPLYDLRIDQKIYGELWKTGMFERMSLQDDEHESIEMHLP
 YAKAMESHKDEFTIIPVLVGLALSESKEQEFGKLF SKYLADPSNLFVVSDFCHWGQRF RYSSYYDESQG
 EIYRSIEHLDKMGMSIIIEQLDPVSFSNYLK KYHNTICGRHPIGVLLNAITELQKNGMNMSFSFLNYAQS
 SQCRNWQDSSVSYAAGALTVH
 TRTRPLEMESDESGLPAMEIECRITGTLNGVEFELVGGGEGTPEQGRMTNKMKSTKGALTFSPYLLSHV
 MGYGFYHFGTYPSTYENPFLHAINNGGYNTRIEKYEDGGVLHVSFSYRYEAGRVIGDFKVMGTGFPED
 SVIFTDKIIRSNATVEHLHPMGDNDLDGSFTRTFSLRDGGYSSVVD SHMHFKSAIHPSILQNGGPMFA
 FRRVEEDHSNTELGIVEYQHAFKTPDADAGEERV

Restriction Sites: SgfI-MluI

Cloning Scheme:



ACCN: NM_001301833

ORF Size: 891 bp

OTI Disclaimer: The molecular sequence of this clone aligns with the gene accession number as a point of reference only. However, individual transcript sequences of the same gene can differ through naturally occurring variations (e.g. polymorphisms), each with its own valid existence. This clone is substantially in agreement with the reference, but a complete review of all prevailing variants is recommended prior to use. [More info](#)

OTI Annotation: This clone was engineered to express the complete ORF with an expression tag. Expression varies depending on the nature of the gene.

Components: The ORF clone is ion-exchange column purified and shipped in a 2D barcoded Matrix tube containing 10ug of transfection-ready, dried plasmid DNA (reconstitute with 100 ul of water).

RefSeq: [NM_001301833.3](#)

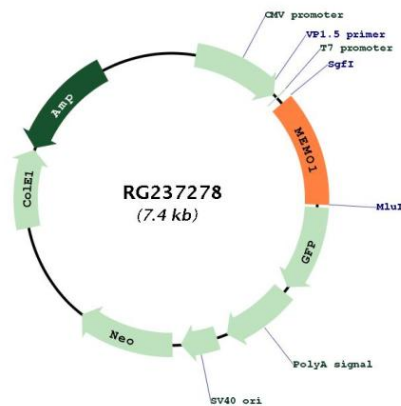
RefSeq Size: 1589 bp

RefSeq ORF: 894 bp

Locus ID: 51072
UniProt ID: [Q9Y316](#)
Cytogenetics: 2p22.3
MW: 33.7 kDa

Gene Summary: May control cell migration by relaying extracellular chemotactic signals to the microtubule cytoskeleton. Mediator of ERBB2 signaling. The MEMO1-RHOA-DIAPH1 signaling pathway plays an important role in ERBB2-dependent stabilization of microtubules at the cell cortex. It controls the localization of APC and CLASP2 to the cell membrane, via the regulation of GSK3B activity. In turn, membrane-bound APC allows the localization of the MACF1 to the cell membrane, which is required for microtubule capture and stabilization. Is required for breast carcinoma cell migration.[UniProtKB/Swiss-Prot Function]

Product images:



Circular map for RG237278