

Product datasheet for **RG237263**

PAX5 (NM_001280550) Human Tagged ORF Clone

Product data:

Product Type:	Expression Plasmids
Product Name:	PAX5 (NM_001280550) Human Tagged ORF Clone
Tag:	TurboGFP
Symbol:	PAX5
Synonyms:	ALL3; BSAP
Mammalian Cell Selection:	Neomycin
Vector:	pCMV6-AC-GFP (PS100010)
E. coli Selection:	Ampicillin (100 ug/mL)
ORF Nucleotide Sequence:	>RG237263 representing NM_001280550. Blue=ORF Red=Cloning site Green=Tag(s)

```
GCTCGTTTAGTGAACCGTCAGAATTTTGTAAACGACTCACTATAGGGCGGCCGGGAATTCGTCGACTG
GATCCGGTACCGAGGAGATCTGCCGCCCGGATCGCC
ATGGATTTAGAGAAAAATTATCCGACTCCTCGACCAGCAGGACAGGACATGGAGGAGTGAATCAGCTT
GGGGGGTTTTTTGTGAATGGACGGCCACTCCCGGATGTAGTCCGCCAGAGGATAGTGGAACCTTGCTCAT
CAAGGTGTCAGGCCCTGCGACATCTCCAGGCAGCTTCGGGTGAGCCATGGTTGTGTCAGCAAAATCTT
GGCAGGTATTATGAGACAGGAAGCATCAAGCCTGGGGTAATTGGAGGATCCAACCAAAGGTCGCCACA
CCCAAAGTGGTGGAAAAAATCGCTGAATATAAACGCCAAAATCCCACCATGTTTGCCTGGGAGATCAGG
GACCGGTGCTGGCAGAGCGGGTGTGTACAATGACACCGTGCCTAGCGTCAGTTCATCAACAGGATC
ATCCGGACAAAAGTACAGCAGCCACCAACCAACAGTCCAGCTCCAGTCACAGCATAGTGCCACT
GGCTCCGTGACGCAGGTGTCTCGGTGAGCACGGATTCGGCCGGCTCGTCGTAATCCATCAGCGGCATC
CTGGGCATCACGTCCCCAGCGCCGACCAACAAGCGCAAGAGAGACGAAGGTATTCAGGAGTCTCCG
GTGCCAAGCGCCACTCGCTTCCGGGCAGAGACTTCTCCGGAAGCAGATGCGGGGAGACTTGTTTACA
CAGCAGCAGCTGGAGGTGCTGGACCGGTGTTTGAGAGGCAGCACTACTCAGACATCTTACCACCACA
GAGCCCATCAAGCCCAGCAGGCTCCCCCTACTATTATAGCGTGCCTCCGCGGAGGAGCCGCCACCTG
CAGCCGCCACTGCCTATGACCGTCACTGACCCTGGAGCCAGCGGGCACCAACAC
ACGCGTACGCGGCCGCTCGAG - GFP Tag - GTTTAAAC
```



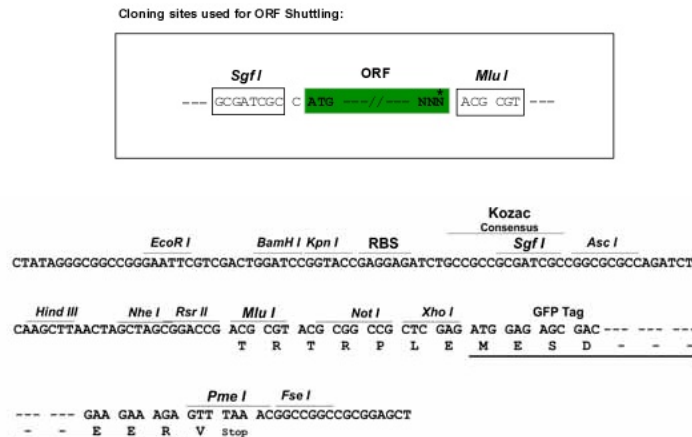
[View online »](#)

Protein Sequence: >Peptide sequence encoded by RG237263
 Blue=ORF Red=Cloning site Green=Tag(s)

MDLEKNYPTPRTSRTGHGGVNQLGGVFNVRPLPDVVRQRIVELAHQGVRPCDISRQLRVSHGCVSKIL
 GRYETGSIKPGVIGGSKPKVATPKVVEKIAEYKRQNPMTFAWEIRDLLAERVCDNDTVPSVSSINRI
 IRTKVQQPPNQVPASSHSIVSTGSVTVQSSVSTDSAGSSYSISGILGITSPSADTNKRKRDEGIQESP
 VPNGHSLPGRDFLRKQMRGDLFTQQQLEVLDRVFERQHYSYDIFTTTEPIKPEQAPPTIIALPPEEPHLL
 QPPLPMTVTDVPSQAGTKH
 TRTRPLEMESDESGLPAMEIECRITGTLNGVEFELVGGGEGTPEQGRMTNKMSTKGALTFSPYLLSHV
 MGYGFYHFGTYPSTYENPFLHAINNGGYTNTRIEKYEDGGVLHVSFSYRYEAGRVIGDFKVMGTGFPEP
 SVIFTDKIIRSNATVEHLHPMGDNDLDGSFTRTFSLRDGGYSSVVDSHMHFKSAIHPSILQNGGPMFA
 FRRVEEDHSNTELGIVEYQHAFKTPDADAGEERV

Restriction Sites: SgfI-MluI

Cloning Scheme:



ACCN: NM_001280550

ORF Size: 885 bp

OTI Disclaimer: The molecular sequence of this clone aligns with the gene accession number as a point of reference only. However, individual transcript sequences of the same gene can differ through naturally occurring variations (e.g. polymorphisms), each with its own valid existence. This clone is substantially in agreement with the reference, but a complete review of all prevailing variants is recommended prior to use. [More info](#)

OTI Annotation: This clone was engineered to express the complete ORF with an expression tag. Expression varies depending on the nature of the gene.

Components: The ORF clone is ion-exchange column purified and shipped in a 2D barcoded Matrix tube containing 10ug of transfection-ready, dried plasmid DNA (reconstitute with 100 ul of water).

RefSeq: [NM_001280550.2](#)

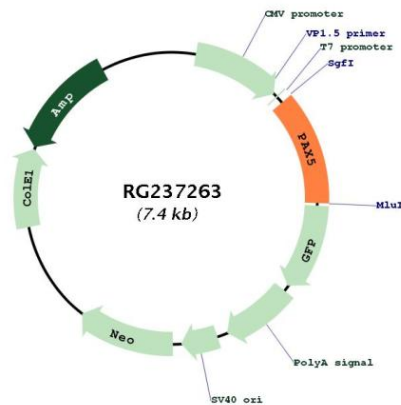
RefSeq Size: 8590 bp

RefSeq ORF: 888 bp

Locus ID: 5079
UniProt ID: [Q02548](#)
Cytogenetics: 9p13.2
Protein Families: Transcription Factors
MW: 32.9 kDa

Gene Summary: This gene encodes a member of the paired box (PAX) family of transcription factors. The central feature of this gene family is a novel, highly conserved DNA-binding motif, known as the paired box. Paired box transcription factors are important regulators in early development, and alterations in the expression of their genes are thought to contribute to neoplastic transformation. This gene encodes the B-cell lineage specific activator protein that is expressed at early, but not late stages of B-cell differentiation. Its expression has also been detected in developing CNS and testis and so the encoded protein may also play a role in neural development and spermatogenesis. This gene is located at 9p13, which is involved in t(9;14)(p13;q32) translocations recurring in small lymphocytic lymphomas of the plasmacytoid subtype, and in derived large-cell lymphomas. This translocation brings the potent E-mu enhancer of the IgH gene into close proximity of the PAX5 promoter, suggesting that the deregulation of transcription of this gene contributes to the pathogenesis of these lymphomas. Alternative splicing results in multiple transcript variants encoding different isoforms. [provided by RefSeq, Jul 2013]

Product images:



Circular map for RG237263