

Product datasheet for **RG237259**

HSH2D (NM_001291274) Human Tagged ORF Clone

Product data:

Product Type:	Expression Plasmids
Product Name:	HSH2D (NM_001291274) Human Tagged ORF Clone
Tag:	TurboGFP
Symbol:	HSH2D
Synonyms:	ALX; HSH2
Mammalian Cell Selection:	Neomycin
Vector:	pCMV6-AC-GFP (PS100010)
E. coli Selection:	Ampicillin (100 ug/mL)
ORF Nucleotide Sequence:	>RG237259 representing NM_001291274. Blue=ORF Red=Cloning site Green=Tag(s)

```
GCTCGTTTAGTGAACCGTCAGAATTTTGTAAACGACTCACTATAGGGCGGCCGGGAATTCGTCGACTG
GATCCGGTACCGAGGAGATCTGCCGCCGCGATCGCC
ATGAGGGGGAGTAGGATGTCCCAGCCCCCGAGTGTCTCCGAGAGCCAAAGCAGCTGCTGCCATTTT
ATGGTGAAGCTCTTGGATGATGGGACTTTCATGATCCCCGGGGAGAAGGTGGCCACACCTCGCTGGAC
GCCCTGGTCACCTTCCACCAGCAGAAGCCAATTGAGCCGCGCAGGGAGCTGCTGACACAGCCCTGCAGG
CAGAAGGATCCCCAAACGTGGATTACGAGGATCTTCTCTACTCCAACGCAGTGGCCGAGGAAGCT
GCCTGCCCGGTGTCTGCCCTGAGGAGGCTCCCCAAAGCCAGTCTGTGTACCAATCAAAGGAAAGG
AAGCCGTCAGCAGAGATGAACAGAATAACCACCAAGGAAGCCACTTCTCTGCCCCCAAATCCCT
CTTGGAGAGACCCGCCAGAACTCTGGAGAGCCTCAAAATGCTCCCCGAGAGAGCCAGAGGGTCCGG
CAGCAGCTAAAAAGCCACCTCGCCACTGTGAATTGTCGTCACCTTTGGATGTCCGGAGATCCACGGTG
ATCTCAGGCCCTGGGACCGGAAAAGGCAGCCAAGATCACTCAGGGGATCCACCTCGGGGACAGAGGC
TACACGGATCCCTGTGTGGCCACATCTCTAAAAGCCCCACAGCCCCAGGCACCAAAGACAGAAAG
GTCCCCACAGGAAGGCCGAGAGGTCGGTCAGCTGCATTGAGGTGACCCAGGGGACAGGAGTTGGCAC
CAAATGGTAGTGAGAGCCCTATCTCCAGGAGTCCAAGCCAGAGCACCAGGGCTTGGCAGAGCCTGAG
AACGACCAGCTCCCGGAGGAGTACCAACAACCGCCACCCCTTTGCCCTGGGTACTGC
ACGCGTACGCGGCCGCTCGAG - GFP Tag - GTTTAAAC
```



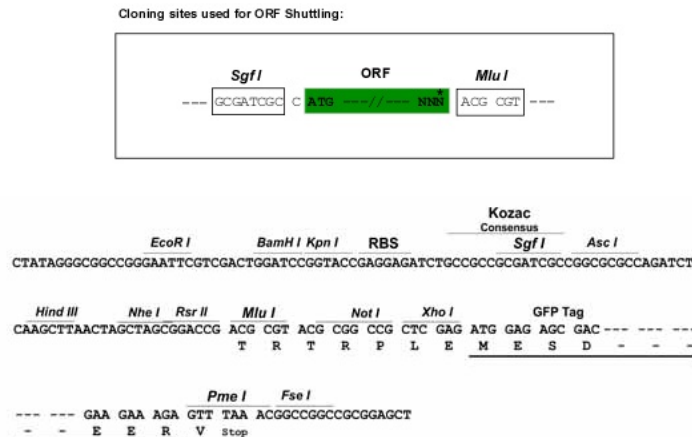
[View online »](#)

Protein Sequence: >Peptide sequence encoded by RG237259
 Blue=ORF Red=Cloning site Green=Tag(s)

MRGSRMSQPPQCLRRAQSSCCHFVVKLLDDGTFMIPGEKVAHTSLDALVTFHQKPIEPRELLTQPCR
 QKDPANVDYEDLFLYSNAVAEEAACPVSAPEEASPKPVLCHQSKERKPSAEMNRITTKAATSSCPPKSP
 LGETRQKLWRSKMLPERGQVRVQQLKSHLATVNLSSLVRRSTVIVSGPGTGKGSQDHSQDPTSGDRG
 YTDPCVATSLKSPSQAPKDRKVPTRKAERSVSCIEVTPGDRSWHQMVVRLSSQESKPEHQGLAEPE
 NDQLPEEYQPPPFAPGYC
 TRTRPLEMESDESGLPAMEIECRITGTLNGVEFELVGGGEGTPEQGRMTNKMSTKGALTFSPYLLSHV
 MGYGFYHFGTYPSTYENPFLHAINNGGYNTRIEKYEDGGVLHVSFSYRYEAGRVIGDFKVMGTGFPEP
 SVIFTDKIIRSNATVEHLHPMGDNDLDGSFTRTFSLRDGGYSSVVDSHMHFKSAIHPSILQNGGPMFA
 FRRVEEDHSNTELGIVEYQHAFKTPDADAGEERV

Restriction Sites: SgfI-MluI

Cloning Scheme:



ACCN: NM_001291274

ORF Size: 885 bp

OTI Disclaimer: The molecular sequence of this clone aligns with the gene accession number as a point of reference only. However, individual transcript sequences of the same gene can differ through naturally occurring variations (e.g. polymorphisms), each with its own valid existence. This clone is substantially in agreement with the reference, but a complete review of all prevailing variants is recommended prior to use. [More info](#)

OTI Annotation: This clone was engineered to express the complete ORF with an expression tag. Expression varies depending on the nature of the gene.

Components: The ORF clone is ion-exchange column purified and shipped in a 2D barcoded Matrix tube containing 10ug of transfection-ready, dried plasmid DNA (reconstitute with 100 ul of water).

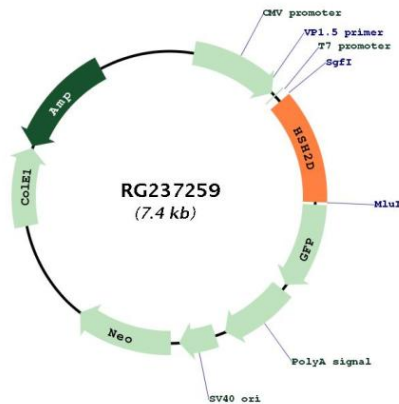
RefSeq: [NM_001291274.1](#), [NP_001278203.1](#)

RefSeq Size: 2936 bp

RefSeq ORF: 888 bp

Locus ID: 84941
UniProt ID: [Q96JZ2](#)
Cytogenetics: 19p13.11
MW: 33.2 kDa
Gene Summary: T-cell activation requires 2 signals: recognition of antigen by the T-cell receptor (see TCR; MIM 186880) and a costimulatory signal provided primarily by CD28 (MIM 186760) in naive T cells. HSH2 is a target of both of these signaling pathways (Greene et al., 2003 [PubMed 12960172]).[supplied by OMIM, Mar 2008]

Product images:



Circular map for RG237259