

Product datasheet for **RG237253**

FAM83A (NM_001288587) Human Tagged ORF Clone

Product data:

Product Type:	Expression Plasmids
Product Name:	FAM83A (NM_001288587) Human Tagged ORF Clone
Tag:	TurboGFP
Symbol:	FAM83A
Synonyms:	BJ-TSA-9
Mammalian Cell Selection:	Neomycin
Vector:	pCMV6-AC-GFP (PS100010)
E. coli Selection:	Ampicillin (100 ug/mL)
ORF Nucleotide Sequence:	>RG237253 representing NM_001288587. Blue=ORF Red=Cloning site Green=Tag(s)

```
GCTCGTTTAGTGAACCGTCAGAATTTTGTAAACGACTCACTATAGGGCGCCGGGAATTCGTCGACTG
GATCCGGTACCGAGGAGATCTGCCGCCGCGATCGCC
ATGAGCCGGTCAAGGCACCTGGGCAAAATCCGGAAGCGTCTGGAAGATGTCAAGAGCCAGTGGGTCGGG
CCAGCCAGGGCTGACTTTAGTGACAACGAGAGTGCCCGGCTGGCCACGGACGCCCTCTTGATGGGGT
TCTGAAGCCTACTGGCGGTGCTCAGCCAGGAAGGCGAGGTGGACTTCTGTCTCGGTGGAGGCCAG
TACATCCAGGCCAGGCCAGGGAGCCCCGTGCCCCAGACACCCTGGGAGGGCGGAAGCAGGCCCT
AAGGGACTGGACTCCAGTCCCTACAGTCCGGCACCTACTCCCTGTGGCCTCAGAGGGCAGCGAGCCG
GCCCTACTGCACAGCTGGGCCTCAGCTGAGAAGCCCTACCTGAAGGAAAAATCCAGCGCCACTGTGTAC
TTCCAGACCGTCAAGCACAACAACATCAGAGACCTCGTCCGCGCTGCATCACCCGGACTAGCCAGAAC
ATTTCCATCCGGAGTGTGGAAGGAGAGATATACTGTGCCAAGTCAGGCAGGAAATTCGCTGGCCAAATC
CGGGAGAAGTTTCATCATCTCGGACTGGAGATTTGTCTGTCTGGATCTTACAGCTTACCTGGCTCTGC
GGACACGTGCACCGGAACATCCTCTCCAAGTTCACAGGCCAGGCGGTGGAGCTGTTTGACGAGGAGTTC
CGCCACCTCTACGCCTCCTCCAAGCCTGTGATGGGCTGAAGTCCCCGCGGCTGGTCGCCCCCGTCCC
CCCGGAGCAGCCCCGGCCAATGGCCGCTTAGCAGCAGCAGTGGCTCCGCCAGTGACCCGACGTCCTCC
AACCCCTCAGCGGCCGCTCGGCAGGCAGCCACCCGGTACCCGAACCTGACGGC
ACGCGTACGCGGCCGCTCGAG - GFP Tag - GTTTAAAC
```



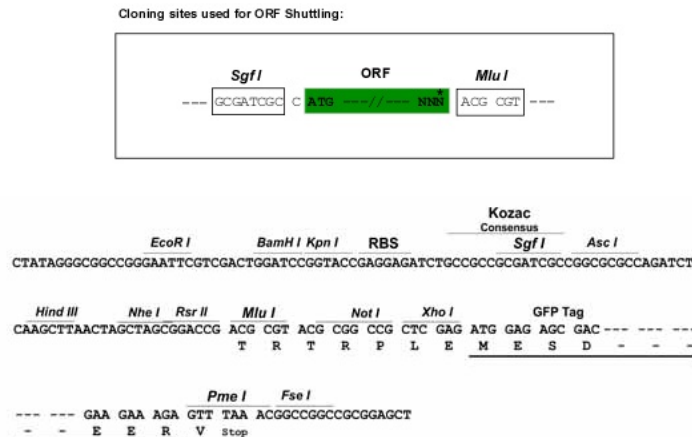
[View online »](#)

Protein Sequence: >Peptide sequence encoded by RG237253
 Blue=ORF Red=Cloning site Green=Tag(s)

MSRSRHLGKIRKRLLEDVKSQWVRPARADFSDNESARLATDALLDGGSEAYWRVLSQEGEVDFLSSVEAQ
 YIQAQAREPPCPPDTLGGAEAGPKGLDSSSLQSGTYFPVASEGSEPALHWSWAEKPYLKEKSSATVY
 FQTVKHNNIRDLVRRCI TRTSQNI SIRSVGEIYCAKSGRKFAGQIREKFIISDWRFVLSGSYFTWLC
 GHVHRNILSKFTGQAVELFDEEFRHLYASKPVMGLKSPRLVAPVPPGAAPANGRLSSSSGSASDRTSS
 NPFSGRSAGSHPGTRTDG
 TRTRPLEMESDESGLPAMEIECRITGTLNGVEFELVGGGEGTPEQGRMTNKMKSTKGALTFSPYLLSHV
 MGYGFYHFGTYPSGYENPFLHAINNGGYNTRIEKYEDGGVLHVSFSYRYEAGRVIGDFKVMGTGFPEP
 SVIFTDKIIRS NATVEHLHPMGDNDLDGSFTRTFSLRDGGYSSVVD SHMHFKSAIHPSILQNGGPMFA
 FRRVEEDHSNTELGIVEYQHAFKTPDADAGEERV

Restriction Sites: SgfI-MluI

Cloning Scheme:



ACCN: NM_001288587

ORF Size: 882 bp

OTI Disclaimer: The molecular sequence of this clone aligns with the gene accession number as a point of reference only. However, individual transcript sequences of the same gene can differ through naturally occurring variations (e.g. polymorphisms), each with its own valid existence. This clone is substantially in agreement with the reference, but a complete review of all prevailing variants is recommended prior to use. [More info](#)

OTI Annotation: This clone was engineered to express the complete ORF with an expression tag. Expression varies depending on the nature of the gene.

Components: The ORF clone is ion-exchange column purified and shipped in a 2D barcoded Matrix tube containing 10ug of transfection-ready, dried plasmid DNA (reconstitute with 100 ul of water).

RefSeq: [NM_001288587.3](#)

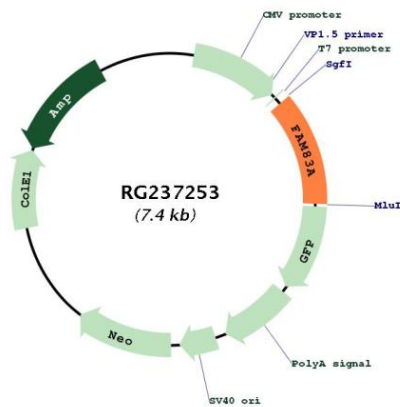
RefSeq Size: 2260 bp

RefSeq ORF: 885 bp

Locus ID: 84985
UniProt ID: [Q86UY5](#)
Cytogenetics: 8q24.13
MW: 32.6 kDa

Gene Summary: Probable proto-oncogene that functions in the epidermal growth factor receptor/EGFR signaling pathway. Activates both RAS/MAPK and PI3K/AKT/TOR signaling cascades downstream of EGFR. Required for the RAS/MAPK signaling cascade activation upon EGFR stimulation, it also activates both signaling cascades independently of EGFR activation. [UniProtKB/Swiss-Prot Function]

Product images:



Circular map for RG237253