

## Product datasheet for **RG237246**

### CWF19L1 (NM\_001303407) Human Tagged ORF Clone

#### Product data:

Product Type:	Expression Plasmids
Product Name:	CWF19L1 (NM_001303407) Human Tagged ORF Clone
Tag:	TurboGFP
Symbol:	CWF19L1
Synonyms:	C19L1; hDrn1; SCAR17
Mammalian Cell Selection:	Neomycin
Vector:	pCMV6-AC-GFP (PS100010)
E. coli Selection:	Ampicillin (100 ug/mL)
ORF Nucleotide Sequence:	>RG237246 representing NM_001303407. Blue=ORF Red=Cloning site Green=Tag(s)

```
GCTCGTTTGTGAACCGTCAGAATTTTGTAAACGACTCACTATAGGGCGGCCGGGAATTCGTCGACTG
GATCCGGTACCGAGGAGATCTGCCGCCGCGATCGCC
ATGAAGCTAATGGATGCAGCAGAACTGGTAAAACAGCCTCCGGATGTCCTGAAAACCCCTACAGAAAA
TCTGGGCAGGAAGCATCCATAGGAAAGCAAATTTGCCCTGTGGAAGAATCAGCCTGTCAGTTTTTC
TTTGATTTAAATGAAAAGCAGGGAAGGAAGCGTTCATCCACAGGTAGAGATAGCAAATCTTCTCCTCAT
CCAAAGCAGCCTCGAAACCTCCTCAGCCTCCAGGACCCTGCTGGTTTTGCCTTGCTAGCCCTGAAGTG
GAAAAACATTTGGTGGTCAACATCGGCACACATTGCTACCTTGCCTGGCCAAAGGAGGCTTATCTGAT
GACCATGTCCTCATCCTGCCTATTGGACTACTACAGTCAGTGGTGGAGCTTTCAGCAGAGGTGGTAGAA
GAGGTGGAGAAGTATAAGGCCACTCTGAGACGGTCTTTAAGAGTCGAGGAAATGGTGTGTGATTTT
GAGAGAAATTATAAGAGCCATCACCTCCAGCTACAGGTCAATCCTGTCCCAATCAGCTGCTCTACTACT
GATGACATTAAGATGCCTTCATTACCCAGGCACAGGAGCAGCAGATAGAGCTGTTGAAAATCCCAGAG
CACTCTGACATCAAGCAGATTGCACAGCCAGGAGCAGCATATTTTTATGTTGAACTTGACACAGGAGAA
AAGCTTTCCACAGAATTAAGAAATTTTCTTTGCAGTTTGGAAAGGAGGTCTGGCCAGTGAAGCC
ATCCTTAATGTTCTGATAAGTCTGACTGGAGGCAGTGTGAGATCAGCAAGGAAGACGAGGAGACCCTG
GCTCGCCGCTTCGGAAAGACTTTGAGCCCTATGACTTTACTCTGGATGAC
ACGCGTACGCGGCCGCTCGAG - GFP Tag - GTTTAAAC
```



[View online »](#)

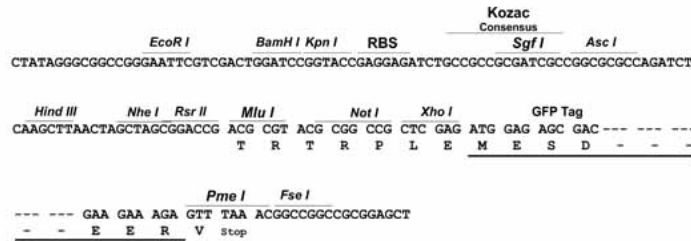
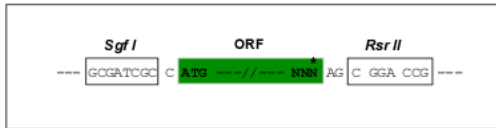
**Protein Sequence:** >Peptide sequence encoded by RG237246  
 Blue=ORF Red=Cloning site Green=Tag(s)

MKLMDAELVKQPPDV TENPYRKSGQEASIGKQILAPVEESACQFFDLNEKQGRKRSSTGRDSKSSPH  
 PKQPRKPPQPPGPCWFC LASPEVEKHLV VNI GTHCYLALAKGGLSDDHVLILPIGHYQSVVELSAEVVE  
 EVEKYKATLRRFFKSRGKWCVVFERNYKSHHLQLQVIPVPI SCSTDDIKDAFITQAQEQQIELLEIPE  
 HSDIKQIAQPGAAYFYVELDTGEKLFHRIKKNFPLQFGREVLASEAILNVPDKSDWRQCQISKEDDEETL  
 ARFRKDFEPYDFLDD  
 TRTRPLEMESDESGLPAMEIECRITGTLNGVEFELVGGGEGTPEQGRMTNKMKSTKGALTFSPYLLSHV  
 MGYGFYHFGTYP SGYENPFLHAINNGGYNTRIEKYEDGGVLHVSFSYRYEAGRVIGDFKVMGTGFPEP  
 SVIFTDKIIRS NATVEHLHPMGDNDLDGSFTRTFSLRDGGYSSVVD SHMHFKSAIHPSILQNGGPMFA  
 FRRVEEDHSNTELGIVEYQHAFKTPDADAGEERV

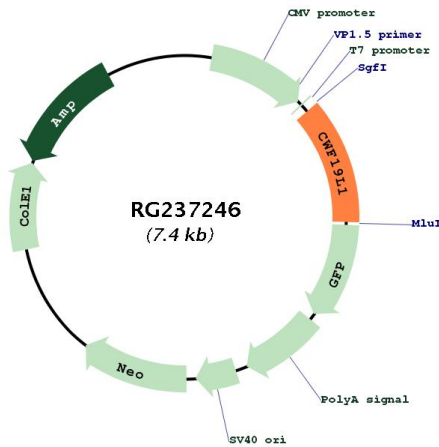
**Restriction Sites:** SgfI-RsrII

**Cloning Scheme:**

Cloning sites used for ORF Shuttling:



**Plasmid Map:**



**ACCN:** NM\_001303407

<b>ORF Size:</b>	879 bp
<b>OTI Disclaimer:</b>	The molecular sequence of this clone aligns with the gene accession number as a point of reference only. However, individual transcript sequences of the same gene can differ through naturally occurring variations (e.g. polymorphisms), each with its own valid existence. This clone is substantially in agreement with the reference, but a complete review of all prevailing variants is recommended prior to use. <a href="#">More info</a>
<b>OTI Annotation:</b>	This clone was engineered to express the complete ORF with an expression tag. Expression varies depending on the nature of the gene.
<b>Components:</b>	The ORF clone is ion-exchange column purified and shipped in a 2D barcoded Matrix tube containing 10ug of transfection-ready, dried plasmid DNA (reconstitute with 100 ul of water).
<b>RefSeq:</b>	<a href="#">NM_001303407.2</a>
<b>RefSeq Size:</b>	2422 bp
<b>RefSeq ORF:</b>	882 bp
<b>Locus ID:</b>	55280
<b>Cytogenetics:</b>	10q24.31
<b>MW:</b>	33.9 kDa
<b>Gene Summary:</b>	This gene encodes a member of the CWF19 protein family. Mutations in this gene have been associated with autosomal recessive spinocerebellar ataxia-17 and mild cognitive disability. Alternative splicing results in multiple transcript variants. [provided by RefSeq, Dec 2014]